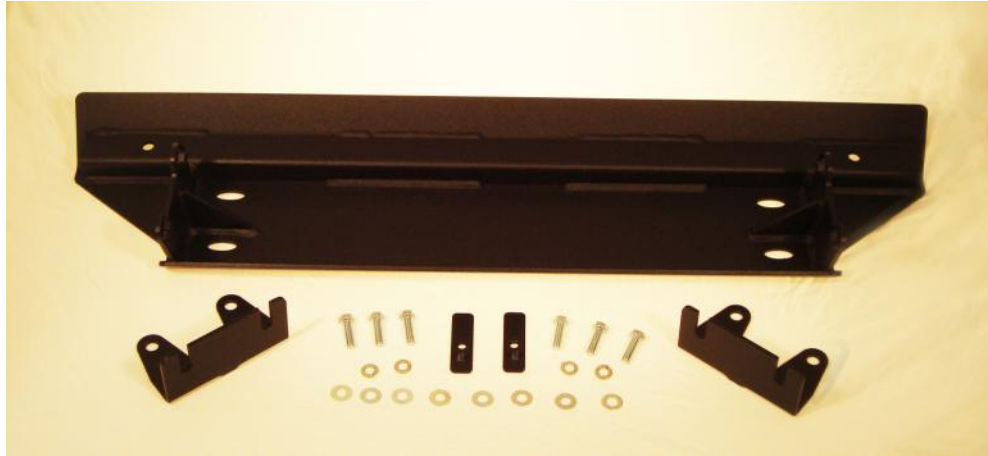




MOUNTAIN OFF ROAD ENTERPRISES, LLC.
P.O. BOX 690 DELTA COLORADO 81416
(877)JEEP-A2Z or (877)533-7229
Ph: 970-625-0500 970-625-3747 FAX
E-mail: info@mountainoffroad.com
www.mountainoffroad.com

INSTALLATION INSTRUCTIONS for JKFSP07 FRONT SKID PLATE



HARDWARE KIT:
1- SKID PLATE
2- MOUNTING BRACKETS
6- 3/8x1 1/4" BOLTS
8- 3/8 FLAT WASHERS
4- 3/8 LOCK WASHERS
2- TAB NUTS

Please read and understand all instructions before beginning the installation of the Front Skid Plate. Please read the terms and policies on the back of these instructions.

The **JKFSP07** Front Skid Plate is designed to fit the following Jeep® vehicles: 2007 to Current JK Wranglers equipped with 6-cylinder engines.

STEP 1: On non-Rubicon models, loosen the 4 sway bar mount bolts enough to slip the bracket between the mount and the frame. On Rubicon models, the bolts will need to be completely removed. (see figure 1)

STEP 2: Slide the mounting brackets between the sway bar mounts and the frame and loosely snug the bolts. (see figures 2 and 4).

STEP 3: On 2010 and up models, the cross member will need to be trimmed flush with the bottom as shown. (see figure 3) Paint should be applied to all cut edges to prevent rust.

STEP 4: Position skid plate as shown and loosely install 4- 3/8x1 1/4" bolts with flat and lock washers. (see figure 4).

STEP 5: Install 2- 3/8x1 1/4" bolts with flat and lock washers up through the skid plate and cross member into the supplied nut tabs. Some models will need the hole on the passenger side drilled. (see figures 5 and 6) Tighten all hardware securely. Your done so go Jeepin !



FIGURE 1



FIGURE 2

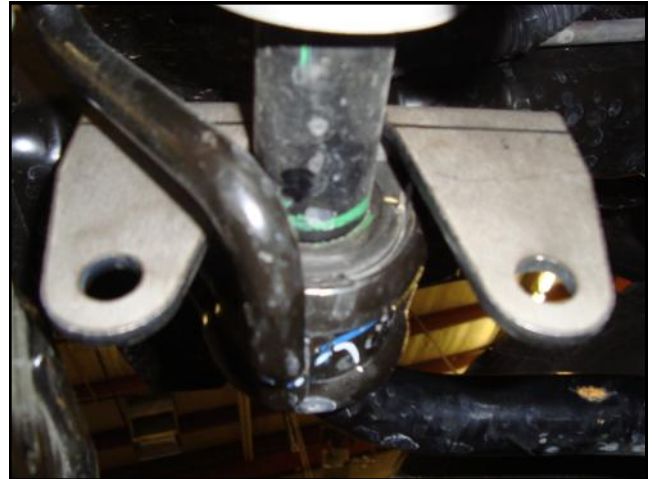


FIGURE 3

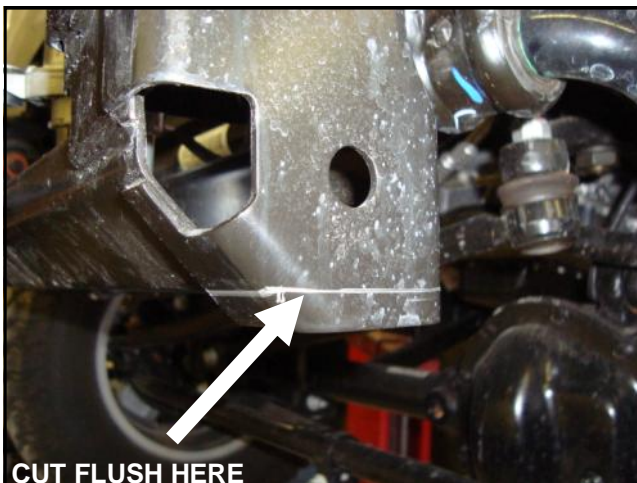


FIGURE 4

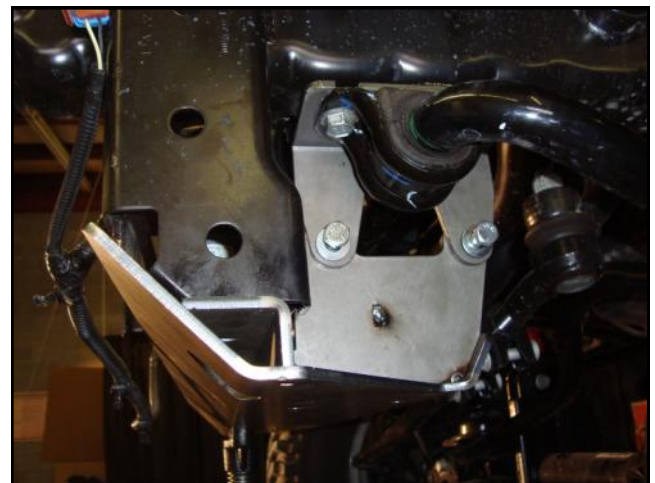


FIGURE 5



FIGURE 6



TERMS-POLICIES:

FIT and TOLERANCES: This skid plate is the result of countless hours of research, testing, fitting and refining. Jeep® frames have a wide tolerance on bolt hole centers from frame to frame. This is why M.O.R.E.™ has installed “slots” in which to mount them. In addition to the factory tolerances, most people install other than factory equipment such as suspension lift kits, bumpers, etc. M.O.R.E.™ has done the best job we can to insure that our parts fit with all of the possibilities. However, you may find it necessary to grind, elongate, bend, or force these parts to fit on your rig. Please use common sense when installing these parts and let us know how we can improve them.

DAMAGE CLAIMS: All orders are carefully packed, however, mishandling by the carrier can result in damage. The carrier has the responsibility for the shipment from the time it leaves our warehouse until it is delivered to you. All claims for lost or damaged goods should be reported to the carrier, not to **M.O.R.E.™** LLC.

RETURNS: No returns will be accepted without prior permission from **M.O.R.E.™** LLC. After you receive a Return Goods Authorization (RGA) number, merchandise must be returned prepaid and insured. A claim must be made within 30 days from receipt of merchandise. The original invoice or a copy with the RGA number written on must accompany all returns. A 20% restocking fee will be charged on all parts returned for credit or refund unless merchandise is proven to be defective or was shipped wrong by **M.O.R.E.™** LLC. No merchandise will be issued credit or refund if it has been installed, modified, used in any way or is in unsalable condition.

WARRANTY: All merchandise is warranted to be free from defects in materials and workmanship prior to installation. Any alteration or improper use will void this warranty. Because all parts we sell are intended for use in heavy-duty applications it is not possible to warrantee or guarantee the performance of any items. **M.O.R.E.™** LLC. products and the products manufactured by others, which we sell may be subject to an infinite variety of conditions due to the manner in which they are used, serviced and/or installed. Purchasers and users of such products rely upon their own judgment as to the suitable use selection, service and installation of such products.

PRODUCT DISCLAIMER: Modification of your vehicle to enhance performance with parts sold by **M.O.R.E.™** LLC. may create a dangerous condition which could cause serious bodily injury, and the buyer hereby expressly assumes all risks associated with any such modifications. All parts sold by **M.O.R.E.™** LLC. are for racing or off road use only. Mountain Off Road Enterprises LLC. will not accept responsibility for personal injury or property damage arising from the failure of any parts manufactured or sold by **M.O.R.E.™** LLC.

Specifications are subject to change without notice.

Jeep®, **AMC®**, **CJ®**, **YJ®**, **TJ®**, **LJ®**, **JK®**, **Wrangler®**, are registered trademarks of DaimlerChrysler. **M.O.R.E.™** is not affiliated with DaimlerChrysler.

M.O.R.E.™, **BombProof™**, **S.R.S.™**, **SlipLoc™**, **DoubleJointed™**, **RockProof™**, are trademarks used by **Mountain Off Road Enterprises, LLC**. These instructions and the M.O.R.E.™ logo are copyright©, 1999-2012.