

M.O.R.E. Dead Pedal Installation Driver and Passenger Sides (07-15 Wrangler JK)

Parts Needed

* M.O.R.E. Dead Pedal Drivers Side (07-15 Wrangler JK) Item # J25070

*Passenger side dead pedal

*2 bolts, 2 washers, 2 locking washers

Please note that Drivers Side Dead Pedal only works with AUTOMATIC TRANSMISSIONS

*M.O.R.E. Dead Pedal Passengers Side (07-15 Wrangler JK) Item # J25071

*Passenger side dead pedal

*2 bolts, 2 washers, 2 locking washers

*10mm socket



Passenger Side

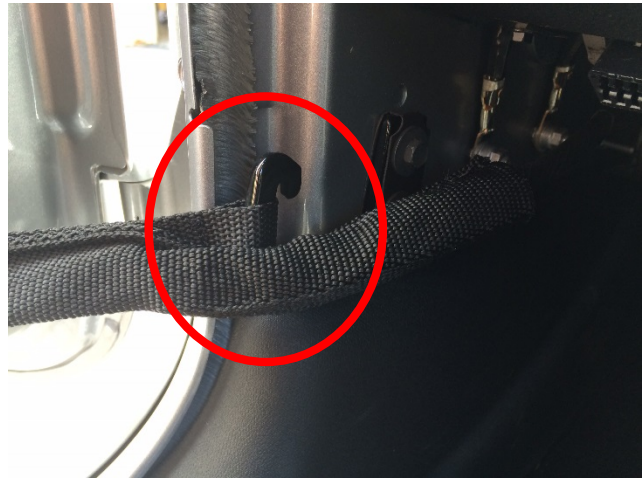


Driver Side

Step 1: Remove the cable restricting door opening.



Passenger Side



Driver Side

Step 2: Remove the cable for electronics (if applicable). Be careful not to allow door to swing.



Passenger Side



Drivers Side

Step 3: Remove the 2 bolts with a 10mm socket attached to the bracket for holding the door opening restrictor. You will not need these bolts but it is recommended to keep the stock hardware in case you want to take off the dead pedal.



Passenger Side

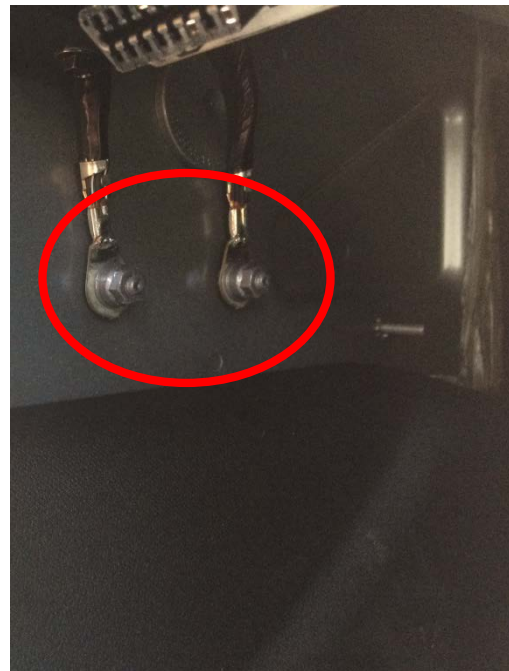


Driver Side

Step 4: Remove the 2 nuts with a 10mm socket attached to the ground wires. Leave the ground wires on the screw posts. Keep these nuts – you will need these at the end.



Passenger Side



Driver Side

Step 5: Place the dead pedal on the screw posts. There are 3 separate adjustment levels for the dead pedal. Choose one and hand snug the nuts back to the posts. Test the level of the dead pedal, and move to desired level before moving on.



Passenger Side



Driver Side

Step 6: Turn the ground wires straight up so that the wires fall into the cut out on the bracket. Hand snug the nuts to the ground wire posts.



Step 7: Make sure that the door opening restrictor plate is behind the dead pedal. Take the supplied bolts, add the locking washers, then the other washer. Hand snug the bolts.



Passenger Side



Driver Side

Step 8: Using the 10mm socket, tighten down the 4 bolts.

Step 9: Replace the electric wires to the harness and the door open restrictor to the bracket.
Enjoy!



Passenger Side



Driver Side

Installation Guide written by ExtremeTerrain Customer Michael Marcantonio 10/11/2014