



GENERAL INSTALLATION INSTRUCTIONS FOR TAPE MOUNTED ACCESSORIES

1. Clean mounting surface with isopropyl alcohol (rubbing alcohol). Avoid areas that the item will not be adhered to. Allow surface to dry completely before attaching item. Also, be sure the surface temperature is between 18-43°C (65-110°F) prior to application.

THIS MUST BE DONE FOR ADHESIVE TAPE TO PROPERLY STICK. FAILURE TO CLEAN COULD RESULT IN POOR ATTACHMENT AND FAILURE OF ITEM TO STAY ATTACHED.

2. Test fit item to the vehicle before removing the plastic liner from the double-sided tape. This will aid in aligning the piece properly before securing to the vehicle.

3. Remove liner from the double-sided tape. The liner can be removed easier with the aid of a knife or cutting blade. Peel from leading edges and pull away from tape as shown in Figure 1.



Figure 1

4. Carefully align item to its proper location on the vehicle and press firmly to ensure proper contact. Be sure item is securely attached before operating the vehicle. Maximum adhesion occurs within 24 hours of application.

LIMITED 12 MONTH WARRANTY **Applies to Rugged Ridge by Omix-Ada Inc. Products**

Rugged Ridge Off Road (the Company) warrants to the original purchaser of this product that should the product or any part thereof, under normal use and conditions, be proven defective in material or workmanship within 12 MONTHS from the date of original purchase, such defect(s) will be repaired or replaced or credited at the Company's sole option.

To obtain repair or replacement within the terms of this Warranty, the product is to be delivered with proof of warranty coverage (e.g. Dated bill of sale), specification of defect(s) to the place of purchase or, with prior approval from the Company (Return Authorization Number is required), freight pre-paid to the Company address listed below.

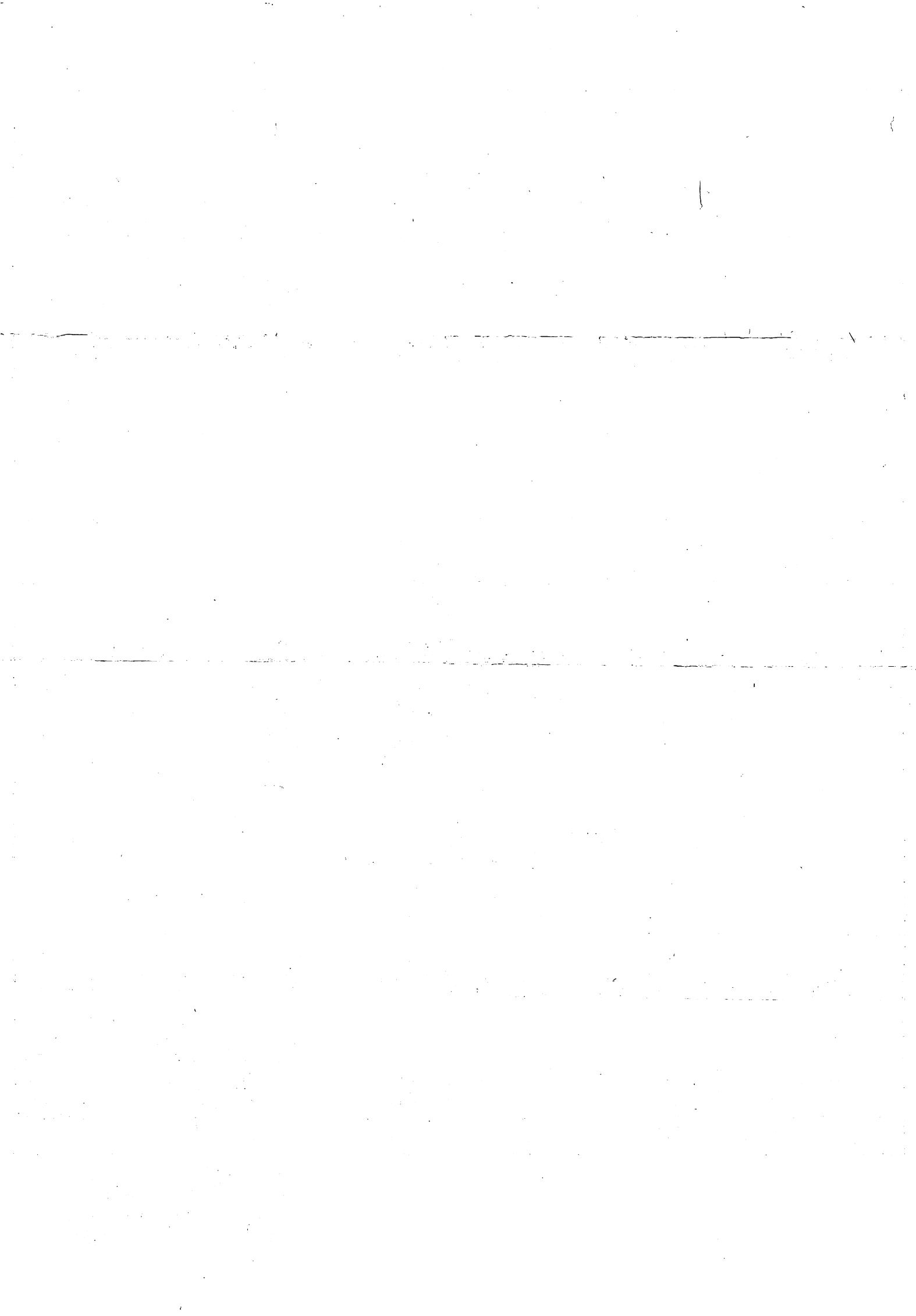
This warranty does not apply to any product or part thereof which, in the opinion of the Company, has suffered or been damaged through alteration, improper installation, mishandling, misuse, neglect, accident or by acts of nature. THE EXTENT OF THE COMPANY'S LIABILITY UNDER THIS WARRANTY IS LIMITED TO THE REPAIR OR REPLACEMENT PROVIDED ABOVE AND, IN NO EVENT, SHALL THE COMPANY'S LIABILITY EXCEED THE PURCHASE PRICE PAID BY PURCHASER FOR THE PRODUCT.

This Warranty is in lieu of all express warranties or liabilities. ANY IMPLIED WARRANTIES, INCLUDING ANY IMPLIED WARRANTY OF MERCHANTABILITY, SHALL BE LIMITED TO THE DURATION OF THIS WRITTEN WARRANTY. ANY ACTION FOR BREACH OF ANY WARRANTY HEREUNDER INCLUDING ANY IMPLIED WARRANTY OF MERCHANTABILITY MUST BE BROUGHT WITHIN THE PERIOD OF 12 MONTHS FROM DATE OF ORIGINAL PURCHASE.

IN NO CASE SHALL THE COMPANY BE LIABLE FOR ANY CONSEQUENTIAL OR INCIDENTAL DAMAGES FOR BREACH OF THIS OR ANY OTHER WARRANTY, EXPRESS OR IMPLIED, WHATSOEVER. No person or representative is authorized to assume for the Company any liability other than expressed herein in connection with the sale of this product.

Some States do not allow limitations on how long an implied warranty lasts or the exclusion or limitation of incidental or consequential damage, so the above limitations may not apply to you. This warranty gives you specific legal rights and you may also have other rights, which vary from state to state.

Omix-Ada Inc.
460 Horizon Dr. Suite 400
Suwanee, Georgia 30024





GENERAL INSTALLATION INSTRUCTIONS FOR TAPE MOUNTED ACCESSORIES

1. Clean mounting surface with isopropyl alcohol (rubbing alcohol). Avoid areas that the item will not be adhered to. Allow surface to dry completely before attaching item. Also, be sure the surface temperature is between 18-43°C (65-110°F) prior to application.

THIS MUST BE DONE FOR ADHESIVE TAPE TO PROPERLY STICK. FAILURE TO CLEAN COULD RESULT IN POOR ATTACHMENT AND FAILURE OF ITEM TO STAY ATTACHED.

2. Test fit item to the vehicle before removing the plastic liner from the double-sided tape. This will aid in aligning the piece properly before securing to the vehicle.

3. Remove liner from the double-sided tape. The liner can be removed easier with the aid of a knife or cutting blade. Peel from leading edges and pull away from tape as shown in Figure 1.



Figure 1

4. Carefully align item to its proper location on the vehicle and press firmly to ensure proper contact. Be sure item is securely attached before operating the vehicle. Maximum adhesion occurs within 24 hours of application.

LIMITED 12 MONTH WARRANTY **Applies to Rugged Ridge by Omix-Ada Inc. Products**

Rugged Ridge Off Road (the Company) warrants to the original purchaser of this product that should the product or any part thereof, under normal use and conditions, be proven defective in material or workmanship within 12 MONTHS from the date of original purchase, such defect(s) will be repaired or replaced or credited at the Company's sole option.

To obtain repair or replacement within the terms of this Warranty, the product is to be delivered with proof of warranty coverage (e.g. Dated bill of sale), specification of defect(s) to the place of purchase or, with prior approval from the Company (Return Authorization Number is required), freight pre-paid to the Company address listed below.

This warranty does not apply to any product or part thereof which, in the opinion of the Company, has suffered or been damaged through alteration, improper installation, mishandling, misuse, neglect, accident or by acts of nature. THE EXTENT OF THE COMPANY'S LIABILITY UNDER THIS WARRANTY IS LIMITED TO THE REPAIR OR REPLACEMENT PROVIDED ABOVE AND, IN NO EVENT, SHALL THE COMPANY'S LIABILITY EXCEED THE PURCHASE PRICE PAID BY PURCHASER FOR THE PRODUCT.

This Warranty is in lieu of all express warranties or liabilities. ANY IMPLIED WARRANTIES, INCLUDING ANY IMPLIED WARRANTY OF MERCHANTABILITY, SHALL BE LIMITED TO THE DURATION OF THIS WRITTEN WARRANTY. ANY ACTION FOR BREACH OF ANY WARRANTY HEREUNDER INCLUDING ANY IMPLIED WARRANTY OF MERCHANTABILITY MUST BE BROUGHT WITHIN THE PERIOD OF 12 MONTHS FROM DATE OF ORIGINAL PURCHASE.

IN NO CASE SHALL THE COMPANY BE LIABLE FOR ANY CONSEQUENTIAL OR INCIDENTAL DAMAGES FOR BREACH OF THIS OR ANY OTHER WARRANTY, EXPRESS OR IMPLIED, WHATSOEVER. No person or representative is authorized to assume for the Company any liability other than expressed herein in connection with the sale of this product.

Some States do not allow limitations on how long an implied warranty lasts or the exclusion or limitation of incidental or consequential damage, so the above limitations may not apply to you. This warranty gives you specific legal rights and you may also have other rights, which vary from state to state.

Omix-Ada Inc.
460 Horizon Dr. Suite 400
Suwanee, Georgia 30024