

Classic Rear Bumper & Tire Carrier (97-06 TJ)

Contents:

(1) Rear Bumper
(1) Tire Carrier
(2) D-Rings
(2) Upper Bumper Brackets
(2) Lower Bumper Brackets
(1) Latch Assembly
(1) Spare Tire Base
(1) Spare Tire Mount
(16) M12x1.75x35mm Bolts

(2) M12x1.75x80mm Bolt
(1) M12x1.75x30mm Bolt
(34) M12 Flat Washers
(2) M12 Lock Washers
(16) M12 Lock Nuts
(2) M10x1.50x65mm Bolts
(4) M10x1.50x30mm Bolts
(1) M10x1.50x20mm Bolt
(5) M10 Flat Washers
(1) M10 Lock Washer

(8) M10 Flat Washers
(6) M10 Lock Nuts
(2) Tire Carrier Shims
(1) Tire Carrier Cap
(1) Tire Carrier Washer
(3) Lug Nuts
(1) Allen Wrench
(1) Zerk Fitting

Tools Required:

13mm, 16mm Sockets
3/8" or 1/2" Ratchets & Extensions
T20, T25, T40, T50 Torx Bits
T9 Torx Bit
Trim Panel Removal Tool
Clean Towel
Cleaning Solution



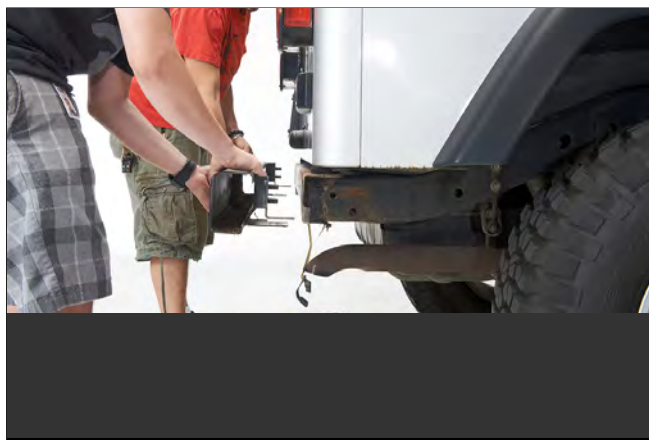
STEP 1 // Remove the rear tire and the (5) 13mm bolts securing the tire carrier.



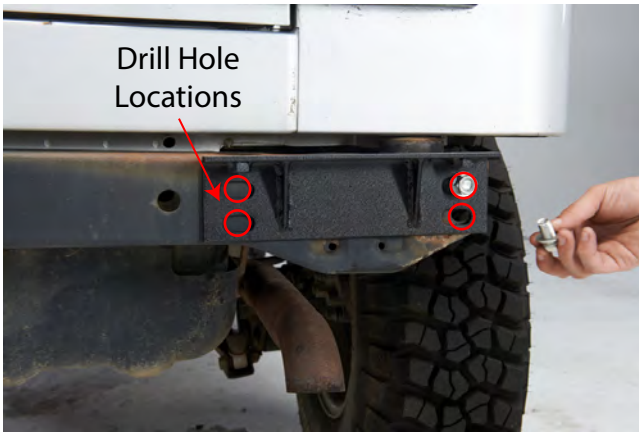
STEP 4 // Using an 18mm socket, remove the (4) bolts securing the rear bumper.



STEP 2 // Remove the Torx screws, on the top and bottom, holding the end caps on the rear bumper. Remove the end caps.



STEP 5 // Slide the bumper away from the back of the vehicle.



STEP 6 // Using the supplied brackets and 18mm hardware, mount them to the vehicle in the factory mounting holes as pictured. ****Note:** The (2) inner mounting holes locations will need to be drilled. Drill using a 3/8" drill bit & drill.



STEP 7 // Slide the new bumper into position on the mounting brackets and line the 4 holes on the top of the bumper up with the 4 holes on the mounting plates.



STEP 8 // You may have to remove the plate bracket for extra clearance. Using a 10mm socket, remove the plate holder.



STEP 9 // Using the 18mm supplied (6) bolts, washers and nuts, install the rear bumper onto the vehicle, leaving it loose for adjustment. Once it is in place and centered, tighten all the bolts.



STEP 10 // Install the swing arm by sliding it over the post on the bumper. ****Note:** Bumper post and swing arm must be greased liberally to prevent corrosion.



STEP 11 // Install the top cap and secure it using the M10 allen bolt.



STEP 12 // Slide the latch assembly into the swing arm and secure using the 17mm bolts and nuts.



STEP 13 // Finally, install the rear tire carrier onto the rear swing arm using the (4) 18mm bolts and nuts and tighten them down. Then, reinstall the rear tire. Installation is now complete.