

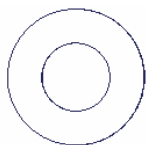


# INSTALLATION INSTRUCTIONS

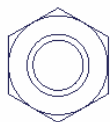
## Storage Trunk Part #025

Please read and fill out the enclosed warranty registration card to activate your warranty.

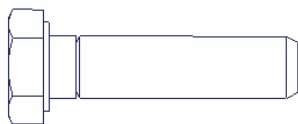
### PARTS CHECKLIST



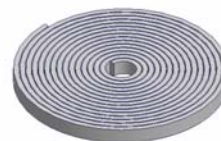
5/16" Washers



(8) 5/16" Nylock Nuts



(4) 5/16"x 1-1/4" Bolts



Rubber Seal

### TOOLS NEEDED

- Electric drill
- 3/8" Drill bit
- Marker or pencil
- Knife
- 1/2" Socket and ratchet
- 1/2" Wrench
- Silicone sealant (Recommended)

### **PLEASE READ ALL INSTRUCTIONS THOROUGHLY BEFORE STARTING INSTALLATION.**

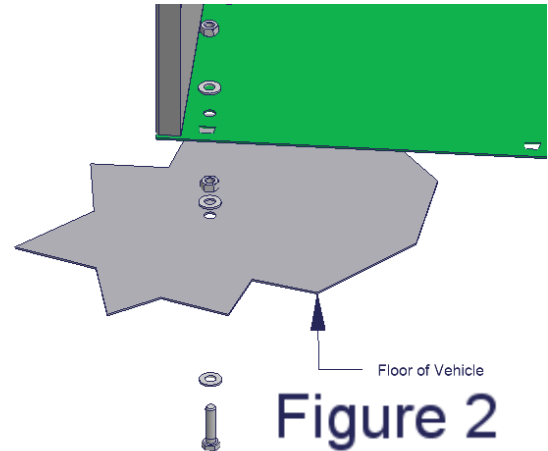
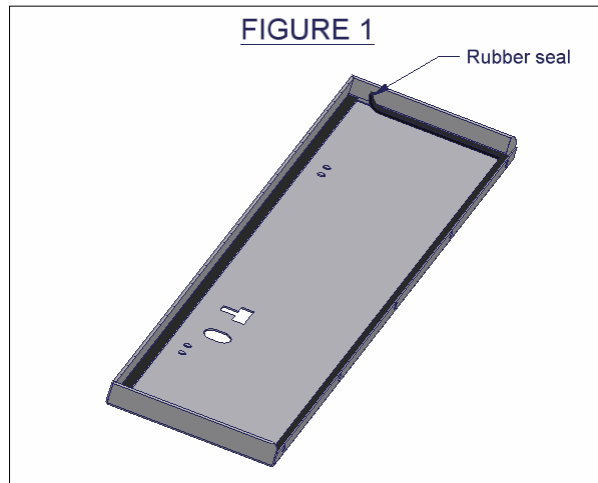
1. Install rubber seal on lid and check lock operation. (SEE FIGURE 1)
2. Place the trunk in the vehicle and center it making sure the tailgate will latch shut, and the seat will fold and tumble(if applicable).
3. Using a marker or pencil, mark (4) spots through the 3/8" mounting holes in the trunk.

### **WARNING!**

**Make sure that there is nothing under the vehicle that will be damaged by the drill bit when drilling. IN MOST VEHICLES THERE IS A GAS TANK UNDERNEATH THE REAR OF THE VEHICLE. THE GAS TANK MAY HAVE TO BE LOWERED TO INSTALL THE MOUNTING BOLTS. PLEASE CONSULT VEHICLE OWNERS MANUAL FOR INSTRUCTIONS ON LOWERING THE GAS TANK.**

4. Remove the trunk. Cut the carpet at the (4) marked holes. Using a 3/8" drill bit, drill out the (4) marked spots in the floor.
5. It is recommended to use silicone sealant in any holes drilled in the vehicle to prevent rusting.
6. **Do not place the trunk in the vehicle until step 8.** Install (2) 5/16 x 1 1/4" bolts with (2) 5/16" washers up from underneath in the two front holes in the vehicle. Fasten the bolts to the floor with (2) 5/16" washers and (2) 5/16" nylock nuts. (SEE FIGURE 2)

7. Place the trunk back in the vehicle over the bolts fastened to the floor. Secure the trunk down to the bolts using (4) 5/16" washers, and (4) 5/16" nylock nuts. (SEE FIGURE 2)



## **ATTENTION:**

### ***FREQUENT LUBRICATION IS NECESSARY ON THE LOCKING SYSTEM***

The pushbutton lock contains an "O" ring seal to protect the interior from dust and water. If this mechanism is not lubricated regularly it will become difficult to operate and it may not return to its home position preventing the key from operating the lock. If this happens simply pull up on the pushbutton to manually bring it back to its home position. Lubricate the pushbutton with a light lubricant such as silicone spray. The pushbutton may have to be periodically disassembled and cleaned.

Call (970)564-1762 for Technical Support