

T-REX

Billet Grilles

11484

**2008 JEEP
WRANGLER**

11484

**2008 JEEP
WRANGLER**

T1 SERIES ACCENTS

FRONT BUMPER GUARD PLATES

Tools Required:

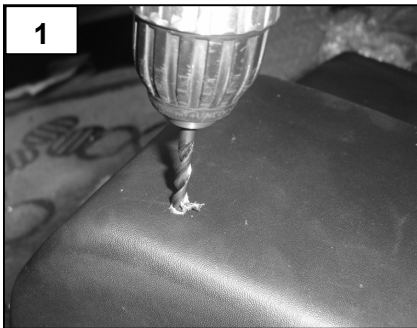
Screwdriver Set
Drill/Drill Bit Set
Marker

Hardware / Parts List:

2 Bumper Guard Plate Accents
8 #10X3/4" Polished Hex Head Screws
8 10/32" Nylon Lock Nuts
8 1" Fender Washers

Step 1

Read and understand all instructions before attempting the install of this grille. Be sure that the package of hardware matches the hardware list as listed above. Next, test fit the T-REX accent to the vehicles factory openings. You are now ready for the install:



Step 2

Place the new plate on the bumper guard. Making sure that the plate is straight, Mark each hole using a bright colored marker. After the holes are marked, drill small pilot holes where you have previously marked (1). Place the bumper plate to the vehicle. Using the hardware; secure the plate to the bumper. Repeat this on the second plate.

Thank you for purchasing your T-Rex billet grille. 9/15/08