



WWW.SMITTYBILT.COM

Installation Instructions
Cage Kit
07-11 JK Unlimited (4-Dr)
Part # 76902

Please read instructions entirely before installing this product. Drilling is required to install this part.

Parts Included	Qty
Driver Front Upright	1
Passenger Front Upright	1
Dash Bar	1
Front Top Cross Bar	1
Front Top Main Plate	1
Rear Top Main Plate	1

Parts Included	Qty
Pass Side Drill Template (7289)	1
Drvr Side Drill Template (7288)	1
Tube Spacers	2
Sport Bar Clamps	4
Hardware Bag (90-6806)	1

Step 1: If equipped fold down your softop or remove your hardtop.

Step 2: Remove your sun visors and front top corner plastic molded piece. (Fig 1, 2, 3)



(Fig 1)



(Fig 2)



(Fig 3)

Step 3: Unzip the sport bar padding covers on the tubes above each door. Remove the hard foam core underneath. Use care when doing so.

Step 4: Remove the vehicles doors and the top inside hinge. Take off both side panels from the side of your front dash. (Fig 4)

Step 5: Install the passenger side drill template (7289) by attaching it to the top inner hinge location on the vehicle using the OEM hardware. (Fig 8)

Step 6: Center punch the two holes, using the drill template as a guide. (Fig 9)



Always use caution when drilling.

For Technical Support/Warranty Information please call 310-762-9944

Smittybilt, 400 West Artesia Blvd, Compton, CA 90220



WWW.SMITTYBILT.COM

Installation Instructions
Cage Kit
07-11 JK Unlimited (4-Dr)
Part # 76902



(Fig 4)



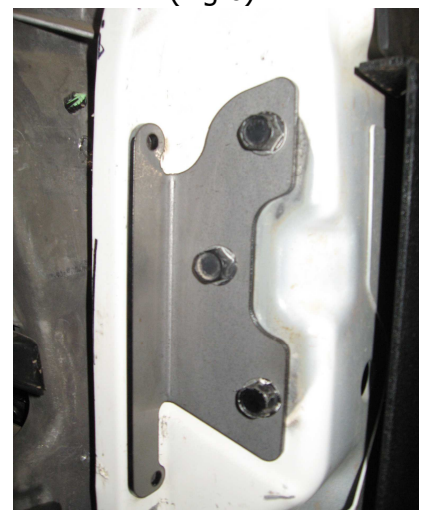
(Fig 5)



(Fig 6)



(Fig 7)



(Fig 8)

Step 7: Remove the drill template. Drill the two marked hole out to 7/16".

Step 8: Install the passenger side vertical front upright; by first sliding the lower corner in first rotating inward slightly and then pushing up horizontally. (Fig 5,6)

Step 9: Line the top of the upright with the two holes near the windshield visor mount. (Fig 7) You may need to knock it into place in order to line up the holes. Re-install the bolts and tighten snug.

For Technical Support/Warranty Information please call 310-762-9944

Smittybilt, 400 West Artesia Blvd, Compton, CA 90220

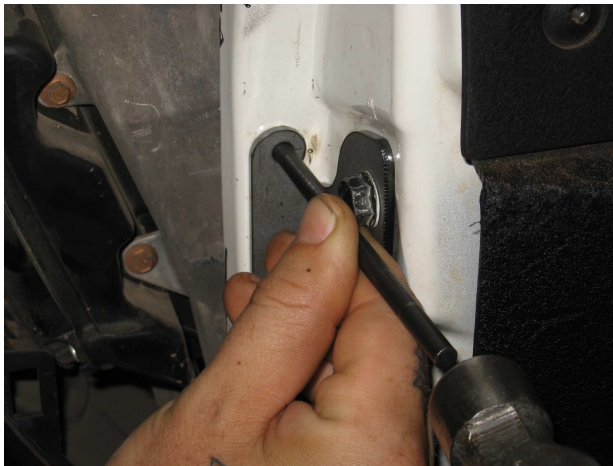


WWW.SMITTYBILT.COM

Installation Instructions
Cage Kit
07-11 JK Unlimited (4-Dr)
Part # 76902

Step 10: Repeat steps 5-9 for the opposite side of the vehicle. Re-install the inner top OEM door hinges.

Step 11: Install the passenger side vertical front upright by securing the top bolts and two button head bolts through the door jam area snug. (Fig 7, 10, 11)



(Fig 9)



(Fig 10)



(Fig 11)

Step 12: Set dash bar across dash. Loosely attach it to the passenger side. (Fig 12, 13, 14)

Step 13: Install the drive side vertical front upright using the same process as Step 11 and attaching the dash bar in at the same time. After everything is connected proceed to tighten all bolts completely.



(Fig 12)



(Fig 13)



(Fig 14)

Step 14: Cut a slot in the OEM top side sport bar cover on the inside part of the cover. (Fig 15, 16)

For Technical Support/Warranty Information please call 310-762-9944

Smittybilt, 400 West Artesia Blvd, Compton, CA 90220



WWW.SMITTYBILT.COM

Installation Instructions
Cage Kit
07-11 JK Unlimited (4-Dr)
Part # 76902



(Fig 15)



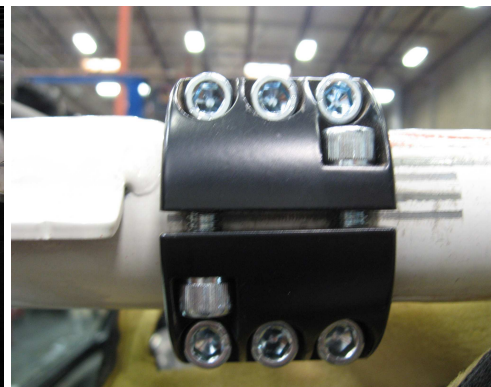
(Fig 16)

Step 15: Install the top front bar (The bend points towards the rear and up) Slide the ends of the bar through the slots you made in the cover. It may be easier to do this at a slight angle first. Move bar forward parallel with the windshield frame. Position it as far forwards as you can.

Step 16: Loosely attach front clamp brackets with the included socket cap bolts.(Fig 17, 18)



(Fig 17)



(Fig 18)



(Fig 19)

Step 17: Remove the center sound bar.

Step 18: Install the front main plate. (From the front top bar back to the center roll cage) Fig 16
Tighten the front where it clamps to the front cross bar snug. (Fig 19)

For Technical Support/Warranty Information please call 310-762-9944

Smittybilt, 400 West Artesia Blvd, Compton, CA 90220



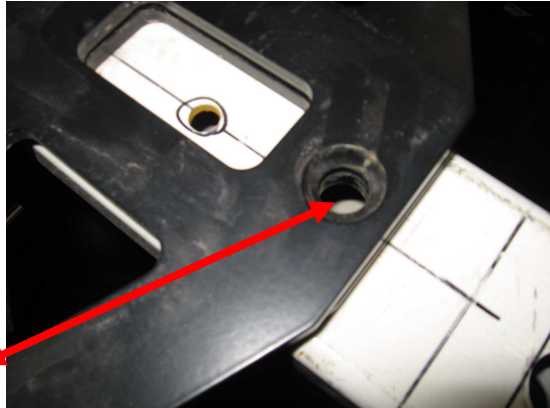
WWW.SMITYBILT.COM

Installation Instructions
Cage Kit
07-11 JK Unlimited (4-Dr)
Part # 76902

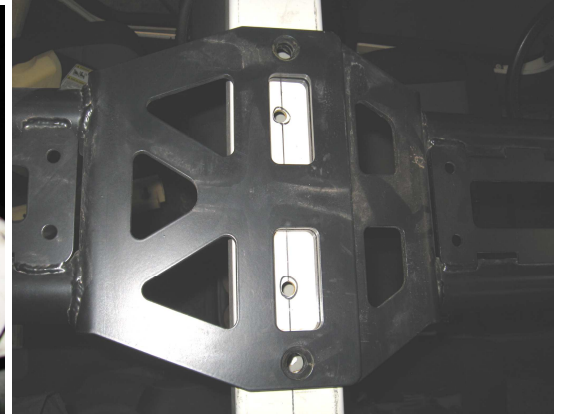
Step 19: Making sure the rear is centered mark the holes. Then remove the main plate and center punch the holes and drill out to 1/2" (Fig 20, 21)



(Fig 20)



(Fig 21)



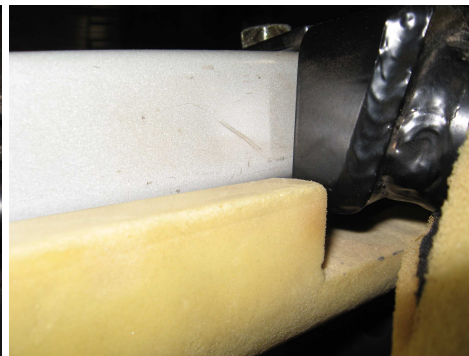
(Fig 22)

Step 20: Set the rear main plate on top of the front main plate on the center sport bar. (Fig 22)

Step 21: Mark the rear sport cover where the rear of the rear top plate would mount. Remove the rear plate and carefully make a slot in the cover so the clamps can go through. You will also need to notch the foam with a sharp razor knife in order for the bracket to sit flush. (Fig 23, 24, 25)



(Fig 23)



(Fig 24)



(Fig 25)

Step 22: The rear of the rear main plate mounts into factory holes. Once padding is slotted and foam is notched reinstall the rear main plate by installing the included tube spacers and hex-bolts. Do not tighten hardware completely. (Fig 26, 27, 28, 29, 30)

For Technical Support/Warranty Information please call 310-762-9944

Smittybilt, 400 West Artesia Blvd, Compton, CA 90220



WWW.SMITTYBILT.COM

Installation Instructions
Cage Kit
07-11 JK Unlimited (4-Dr)
Part # 76902



(Fig 26)



(Fig 27)



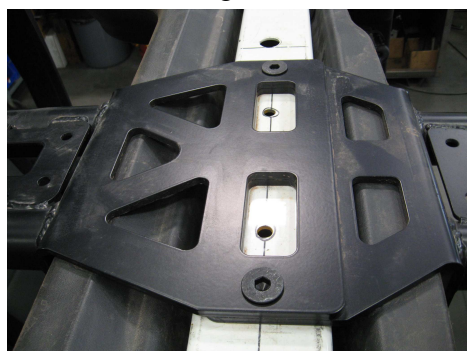
(Fig 28)



(Fig 29)



(Fig 30)



(Fig 31)

- Step 23:** Secure both main plates on the center sport bar with included Allen head hardware. (Fig 31) Do not tighten completely at this time.
- Step 24:** Reinstall the foam and padding on the roll bar brace bars above the doors. You will also need to trim these in order to clear the front top bar of the front main plate. (Fig 32)
- Step 25:** Reinstall the sound bar. It will sit a little lower now. You can trim the lip edge on the inside of the large diameter hole that the “T” top screw goes into.
- Step 26:** OPTIONAL: The front corner molded pieces previously removed can be reinstalled with some careful trimming or left off. If trimming use the installed vertical front uprights in order to use as a guide on where to trim. (Fig 33, 34)
- Step 27:** SOFT TOPS: If you are using your door surrounds you will need to trim a portion of the front clamp on both sides in order to clear the front top cage bar. This can easily be done with a hack-saw. Hold the surround up into position and mark the area that needs to be cut off and then carefully trim it.

For Technical Support/Warranty Information please call 310-762-9944

Smittybilt, 400 West Artesia Blvd, Compton, CA 90220



WWW.SMITYBILT.COM

Installation Instructions
Cage Kit
07-11 JK Unlimited (4-Dr)
Part # 76902



(Fig 32)



(Fig 33)



(Fig 34)

Step 28: Go back and tighten all hardware completely. Installation is now complete.



Compliment your vehicle with other quality parts from Smittybilt

- SRC Tube Doors
- XRC Front and Rear Body Armor
- XRC Rocksliders
- Bumpers
- Neoprene Seat Covers
- Roll Bar Accessories

For Technical Support/Warranty Information please call 310-762-9944

Smittybilt, 400 West Artesia Blvd, Compton, CA 90220



WWW.SMITTYBILT.COM

Installation Instructions
Cage Kit
07-11 JK Unlimited (4-Dr)
Part # 76902

Limited Warranties

Smittybilt's products are covered under the following limited warranties only. Note that the duration of the limited warranty differs according to the material and finish of the product purchased. Subject to the duration and conditions of the limited warranty stated below, Smittybilt warrants to the original retail purchaser that its products are free from defects in material and workmanship. All other warranties and representations express or implied, are hereby disclaimed, including fitness for merchantability and buyer's intended use or purpose. All parts are sold "AS IS" except for the limited warranties granted herein. Buyer assumes all risks as to the selection, suitability and performance of all goods and products selected. This limited warranty does not cover damage or impairment in any part due to misuse, improper installation, accident or contact with on-road or off-road hazards, product modification, improper or inadequate cleaning and/or maintenance. Smittybilt is not responsible for items damaged during shipping. This warranty is not transferable from the original buyer. For the original Buyer to be eligible for the limited warranty coverage, the Buyer must provide proof of purchase. Smittybilt strongly recommends returning the warranty registration card.

Customer's remedy hereunder shall be limited only to repair or replacement (at Smittybilt's option) of any defective part(s) returned to Smittybilt at customer's expense. The determination of whether or not a returned part is defective or subject to coverage under the limited warranties stated herein shall be made at Smittybilt's sole discretion.

1. Limited Five (5) Year / 50,000 Mile Pro-Rata Warranty (whichever occurs first) on Dual-Stage Powder Coating Products -

Smittybilt dual-stage powder coated products carry the foregoing limited repair or replacement warranty for a period of (5) years or 50,000 miles (whichever occurs first) from date of purchase against workmanship and defects in the material, provided that any claim submitted after (2.5) years from date of purchase shall, if accepted, be satisfied by Smittybilt offering customer a credit on the purchase of a replacement product equal to fifty percent (50%) of customer's initial purchase price.

To assure product quality, Smittybilt reserves the right to change product design, material, specification and finishes without prior notice to customers. This limited warranty gives you specific legal rights and you may also have other rights, which may vary from state to state. Some states do not allow limitations on how long an implied warranty lasts, so the above limitations may not apply as to you. Also, some states do not allow the exclusion or limitation of incidental or consequential damages, so the above limitations or exclusions may not apply to you. Smittybilt reserves the right to discontinue product lines and substitute products, or provide other remedies than those listed in this limited warranty for those discontinued products.

Warning

Rollover and other types of vehicle accidents may result in serious injury or death to you, your passengers and others sharing the road. Smittybilt accessories are decorative and are not intended to reduce or avoid injury or damage in the event of an accident. The weight and location of Smittybilt accessories may affect your vehicles' handling, stability and performance, creating an increased risk of accident or rollover. Before installing any accessory, check state laws and assure that the accessory will not obscure any lights or interfere with proper operation on your vehicle's safety equipment. Consult your owner's manual and the Smittybilt instructions, or additional safety information. Smittybilt products, nor the warnings contained herein, are not a substitute for your safe driving. Don't drink and drive, always use seat belts and don't drive faster than conditions permit.

For Technical Support/Warranty Information please call 310-762-9944

Smittybilt, 400 West Artesia Blvd, Compton, CA 90220