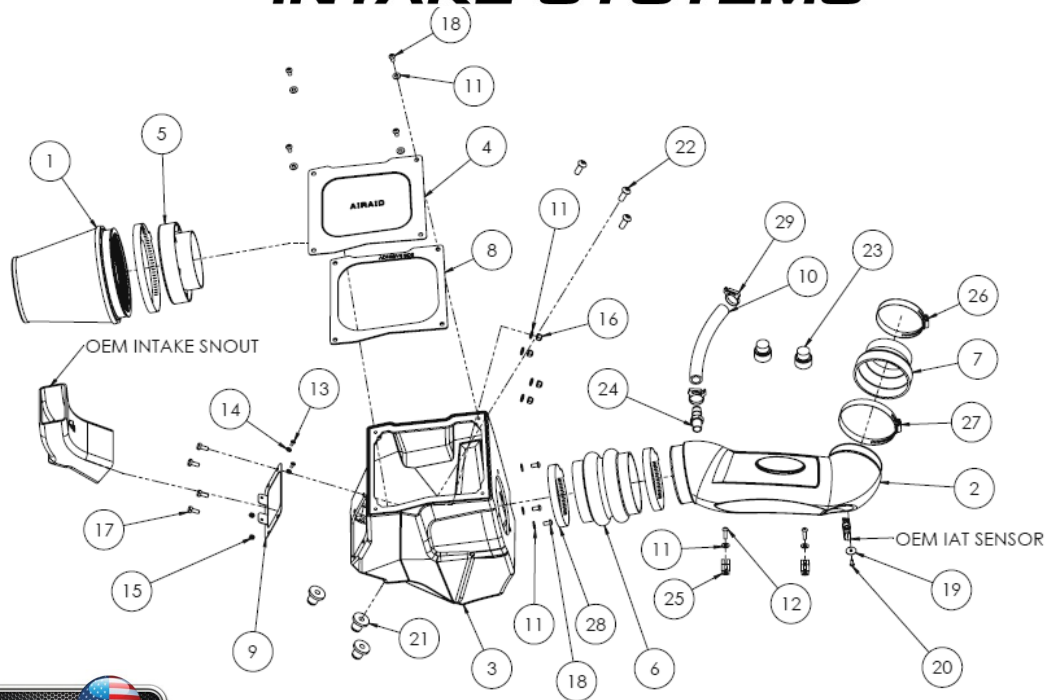




INTAKE SYSTEMS



Advisory Note: Installation of this intake system requires minor modifications be made to the factory air box. Please read through these instructions in their entirety before beginning the procedure.

Installation Instructions Part Number 310-132 2012-13 Jeep Wrangler 3.6L V6

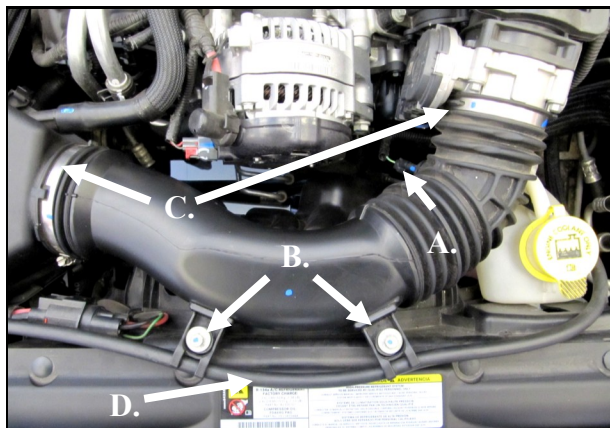
#1	700-462	Airaid Premium Filter	1
#2	KIT132T	Intake Tube	1
#3	KIT132CAB	Cold Air Box	1
#4	KIT132LID	Airbox Lid	1
#5	KIT1121MAFADA	Filter Adapter	1
#6	KITHUMPHS33	Double Hump Hose	1
#7	KITRDCR22	Silicone Reducer	1
KIT132HP		Hardware & Instructions	1
#8	-KIT132G	Airbox Lid Gasket	x1
#9	-KIT132BC	Air Scoop Bracket	x1
#10	-KITHOSE02	5/8" Hose 7 1/2" long	x1
#11	-KIT09FWZ019	1/4" Flat Washer	x13
#12	-KIT20BHC3060	6mm x 1.0-20 Bolt	x2
#13	-KIT15BHC3038	8-32 x 3/8" Button Head Bolt	x2
#14	-KIT15FW3016	#8 Washer	x2
#15	-KIT8CNKEPZ	#8 Kep nut	x2
#16	-KIT25CNNES	1/4" Nylock Nut	x4
#17	-KIT25C62HCSS	1/4-20 x 5/8" Hex Bolt	x4
#18	-KIT15DHC3050	1/4-20 x 1/2" Button Head Bolt	x7
#19	-KITWASHER02	#8 Fender Washer	x1
#20	-KIT15BHC3050	#8-32 x 1/2 Button Head Bolt	x1
#21	-KITNUT01	3/8-16 Well Nut	x3
#22	-KIT15BHC3150	3/8-16 x 1 1/2" Button Head Bolt	x3
#23	-KITGRMT21	Engine Cover Grommet	x2
#24	-KITFITTING30	3/8 NPT x 5/8 Barbed Fitting	x1
#25	-KITCLAMP01	1/2" Adel Clamp	x2
#26	-KITHS48	#48 Hose Clamp	x1
#27	-KITHS64	#64 Hose Clamp	x1
#28	-KITHS72	#72 Hose Clamp	x2
#29	-KITSNP19M4	#19 Speed Clamp	x2

Tools Required: 3/8 Drill and bits. Scratch Awl and Straight Edge. Hack Saw and Bench Vice. Allen wrench set. 8 and 10mm sockets and wrenches, ratchet and extension

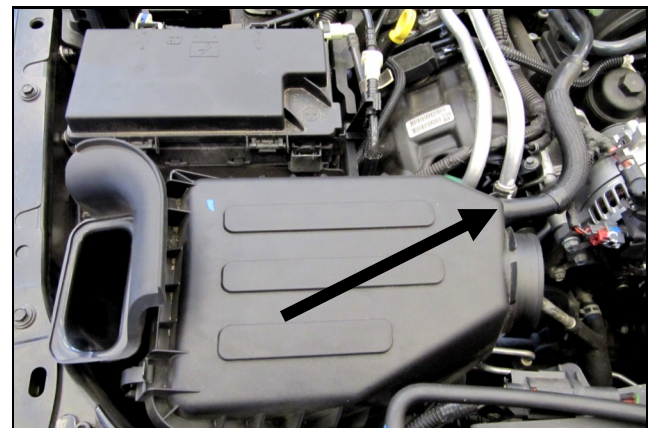


Disconnect The Negative Battery Terminal!

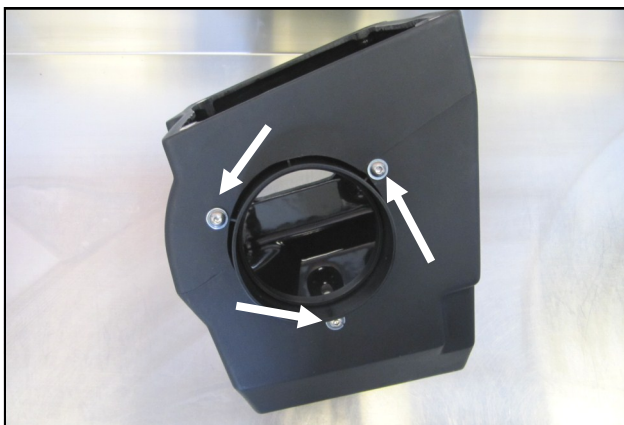
1. Remove the engine cover and set it aside.



2. **A.)** Disconnect the air temp sensor in the factory intake. **B.)** Remove the two 6 mm bolts holding the intake tube to the fan Shroud. **C.)** Loosen the Clamps on both sides of the factory intake tube. **D.)** Unclip the coolant line from the intake tube and remove it from the vehicle.



3. Disconnect the crankcase breather line in the top of the airbox. Remove the entire airbox as an assembly by unseating it from the mounting grommets in the inner fender and lifting upward.



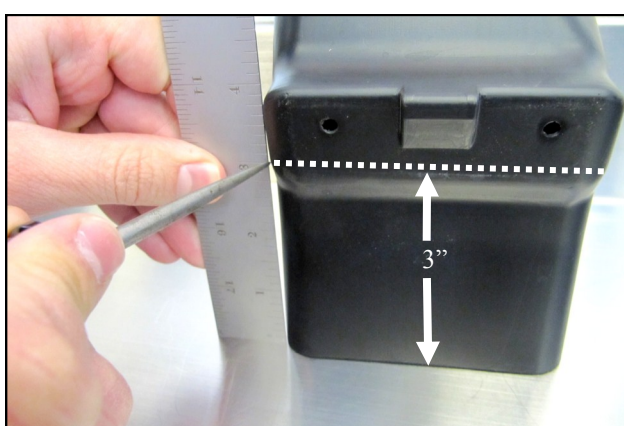
4. Install The Filter Adapter (#5) in the Cold Air Box (#3) using three 1/4-20 x 1/2" Button Head Bolts (#18) and 1/4" Flat Washers (#11).



5. Install the Air Scoop Bracket (#9) into the Cold Air Box as shown by using four 1/4-20 x 5/8 Hex Bolts (#17), 1/4" Flat Washers (#11), and 1/4" Nylock Nuts (#16).



6. Drill out the rivet heads on the factory airbox and remove the air scoop.



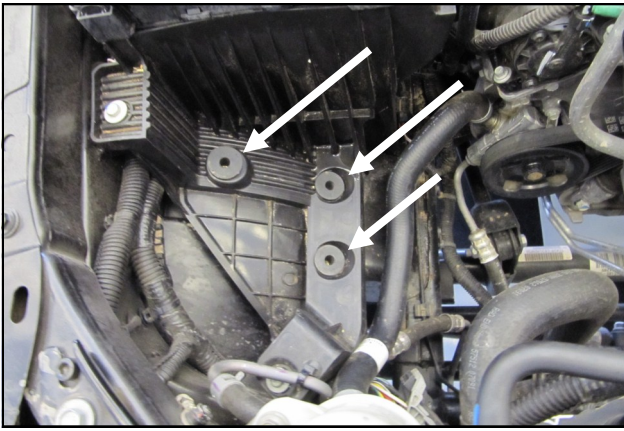
7. Set the factory air scoop on a workbench and mark all four corners at the three inch mark using a scratch awl. Using a straight edge and the awl, scribe a line connecting all four corners.



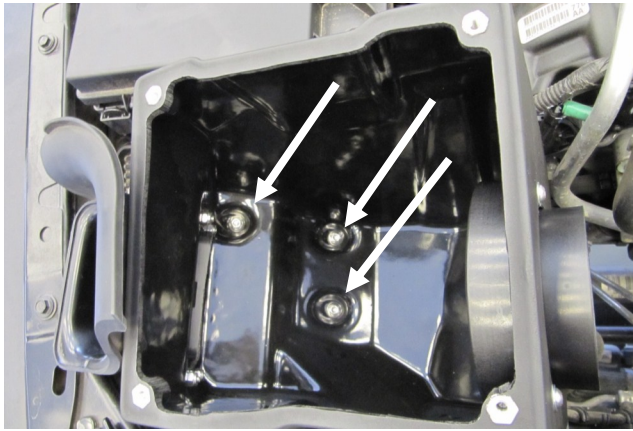
8. Firmly place the air scoop into a bench vice and cut along the line created in step 7 using a hack saw or equivalent.



9. Insert the factory air scoop into the Cold Air Box and secure it using two 8-32 x 3/8" Button Head Bolts (#13), #8 Flat Washers (#14), and #8 Kep Nuts (#15).



10. Replace the factory airbox grommets in the inner fender area with the three 3/8" Well Nuts (#21).



11. Mount the Cold Air Box assembly in the inner fender using the three 3/8" x 1 1/2" Button Head Bolts (#22)



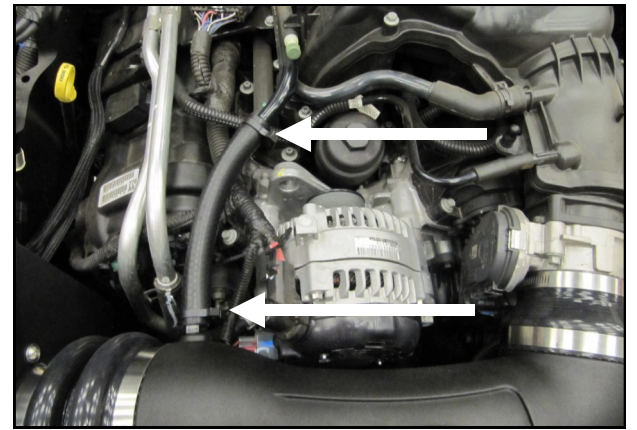
12. A.) Install the 5/8" Barbed Fitting (#24) into the threaded 3/8 hole in the side of the Airaid Intake Tube (#2). B.) Transfer the air temp sensor from the factory intake into the Airaid Intake Tube and secure it using the #8-32 x 1/2" Button Head Bolt (#20) and #8 Fender Washer(#19).



13. Slide the Double Hump Hose (#6), and two #72 Hose Clamps (#28), onto straight end of the Tube. Slide the Silicone Reducer (#7) and the #48 and #64 Clamps on the 90 deg. bend of the Intake tube. Leave the Clamps loose for now.



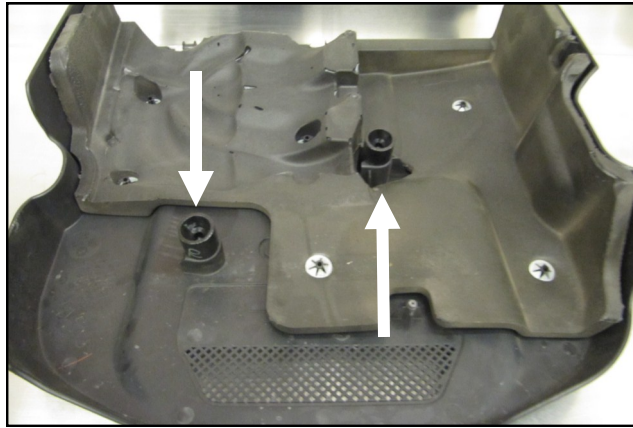
14. Install the Airaid Intake Tube onto the Cold Air Box and throttle body, align and tighten all four of the Clamps. Reconnect the air temp sensor.



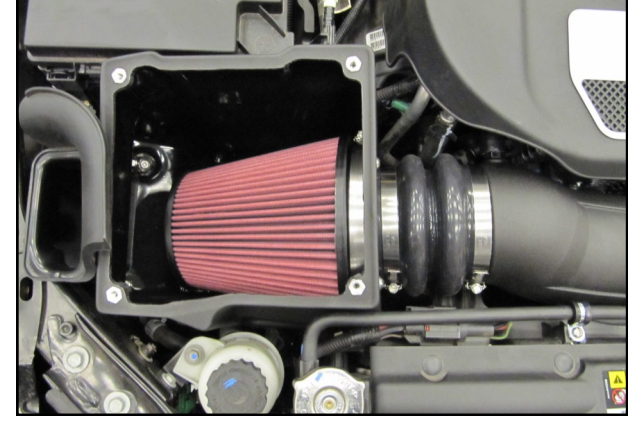
15. Replace the factory breather line with the supplied 5/8" Hose (#10), and connect it to the Barbed Fitting on the Intake Tube. Secure it using a single Speed Clamp (#29) on each end.



16. Secure the coolant line to the fan shroud using the two Adel Clamps (#25), 6 mm Bolts (#12), and 1/4" Flat Washers (#11).



17. Replace the factory engine cover grommets with the larger, Airaid Engine Cover Grommets (#23). Reinstall the engine cover.



18. Install the Airaid Premium Filter (#1) onto the Filter Adapter.



19. Place the Gasket (#8) onto the underside of the Air Box Lid (#4) and peel off the protective film. Mount the lid on the Air Box using four 1/4-20 x 1/2" Button Head Bolts (#18), and 1/4" Flat washers (#11).



20. **Double check your work!** Make sure there is no foreign material in the intake path. Make sure all clamps, hoses, bolts, and screws are tight. Double check the hood clearance! **Reconnect the negative battery cable!**



21. **Pre Filter Option: Part Number 799-445**

For maximum protection in the harshest environments Airaid offers a slip on Pre Filter.

- Prolongs Cleaning Intervals
- Water Repellant
- Free Flowing Protection

Thank you for purchasing the Airaid Intake System. Contact Airaid @ (800) 498-6951 8:00 AM - 5:00 PM MST weekdays for questions regarding fit or instructions that are not clear to you. Your Airaid Intake System was carefully inspected and packaged. Check that no parts are missing, or were damaged during shipping. If any parts are missing, contact Airaid. The air filter element is protected from direct exposure to water and debris; care should be taken not to drive through deep water. WATER INGESTION IS THE DRIVERS RESPONSIBILITY! The air filter is reusable and should be cleaned using the Airaid Filter Tune-Up Kit periodically.



Don't Forget Your AIRAID Filter Tune-Up Kit!

P/N 790-551 Aerosol Spray
P/N 790-550 Squeeze Spray



Instructions Revision
Date: 09/18/12