

Jeep® Seat Adjuster Bracket (Left-Right Seat 2003 - 2006 TJ , LJ)

Item List:

- (1) Universal Seat Adjuster Bracket (1) Return Spring
- (1) M8 Bolt
- (1) M8 Large Flat Washer
- (1) M8 Small Flat Washer
- (1) Nylon Spacer

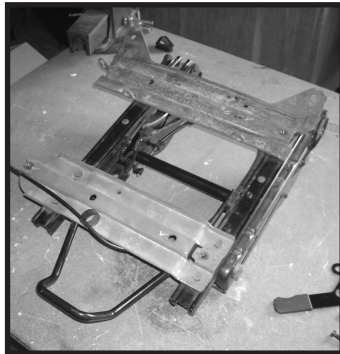


NOTE: Seat Adjuster Bracket has been designed to work with Rugged Ridge XHD seats. Will not work with factory or other manufactures aftermarket seats.

Step 1. Remove seat from factory riser.

Step 2. Disconnect seat slid-fold cable and reroute under seat riser and through front plastic retainer loop. (pic.2)

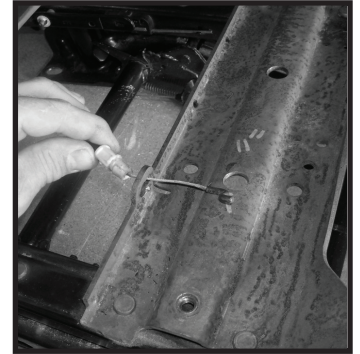
Step 3: Connect cable to rear cross member. (pic.3)



pic.1



pic.2



pic.3

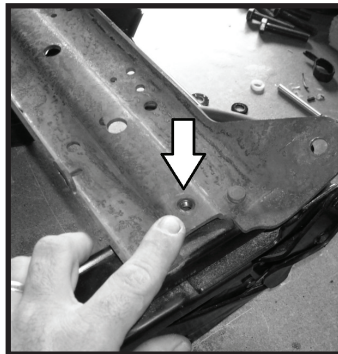
Step 4. Connect cable to adjuster bracket. Cable should be connected to back hole of bracket. (pic.4)

Step 5. Bracket will be secured to factory rear threaded seat mount. (pic.5)

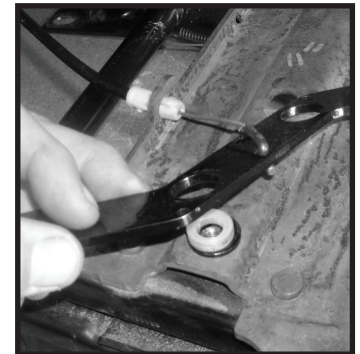
Step 6. Place small M8 flat washer over threaded hole. Place Nylon spacer over small washer. Place adjuster bracket over spacer. (pic.6)



pic.4



pic.5

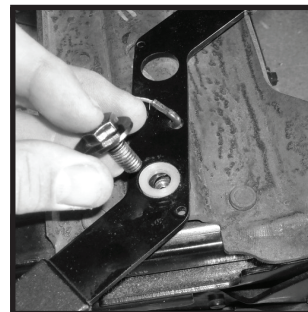


pic.6

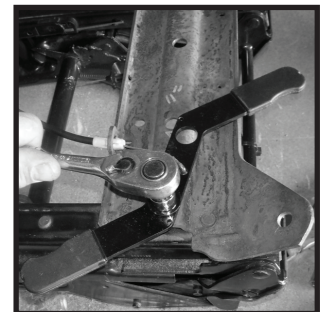
Step 7. Place large M8 Flat washer onto M8 bolt. Put a small amount of thread lock on bolt and secure to seat riser. (pic.7)

Step 8. Tighten M8 bolt (Do Not Over Tighten). Move adjuster arm to insure it moves freely. (pic.8)

NOTE: Adjuster has been designed to function with all Rugged Ridge XHD seats. Following instructions explain correct routing of return spring around XHD steel mounting spacer.



pic.7

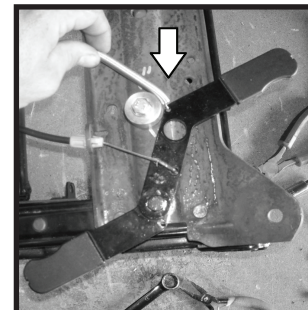


pic.8

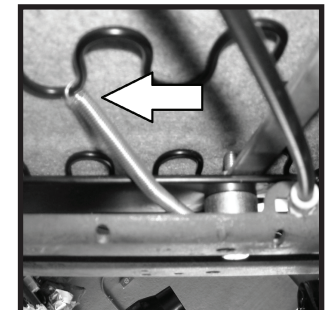
Step 9: Following instructions supplied with XHD seat, mount seat to riser. Note location of adjuster bracket to steel mounting spacer. Bracket should be located behind spacer (pic.9). Oil all moving and sliding parts at this time.

Step10: Connect spring to adjuster bracket as shown in (pic.9), Loop spring around steel mounting spacer and connect to seat wave spring. (pic.10)

Step11: With seat mounted check slide and fold function. repeat steps 1-11 for other side.



pic.9



pic.10