



# Overland HD Tire Carrier

(2007-2018 JK Wrangler)

---

## INSTALLATION INSTRUCTIONS

### CONTENTS

---

- |                                 |                                   |
|---------------------------------|-----------------------------------|
| (1) Tire Carrier                | (2) M6x1.00 16mm Allen Bolts      |
| (1) Hinge Plate                 | (4) M14 Flat Washers              |
| (1) Pin Plate                   | (8) M12 Flat Washers              |
| (2) Pins                        | (8) M10 Flat Washers              |
| (1) Threaded Spare Tire Post    | (6) M8 Flat Washers               |
| (1) Round Retaining Plate       | (5) M6 Flat Washers               |
| (1) Plastic Locater             | (2) M14 Lock Nuts                 |
| (1) Oversized Threaded Wing Nut | (4) M12 Lock Nuts                 |
| (2) Hinges                      | (4) M10 Lock Nuts                 |
| (3) Red Lights                  | (6) M8 Rivet Nuts                 |
| (2) License Plate Lights        | (6) M8 Lock Washers               |
| (2) M14 x2.0 110mm Bolts        | (1) Wrench S=5 x 1                |
| (4) M12x1.75 80mm Bolts         | (1) Wrench S=4 x 1                |
| (4) M10x1.5 100mm Bolts         | (1) License Plate Block Off Plate |
| (6) M8x1.25 25mm Allen Bolts    |                                   |

### TOOLS REQUIRED

---

- 7, 10, 13, 16, 17, 18, 19, 22mm Sockets/ Wrenches
- Ratchet
- T50 Torx Bit
- Flat Head Screw Driver
- 4mm Allen Wrench
- Rotary Cutting Tool
- Punch
- Hammer
- Drill
- 7/16" Drill Bit

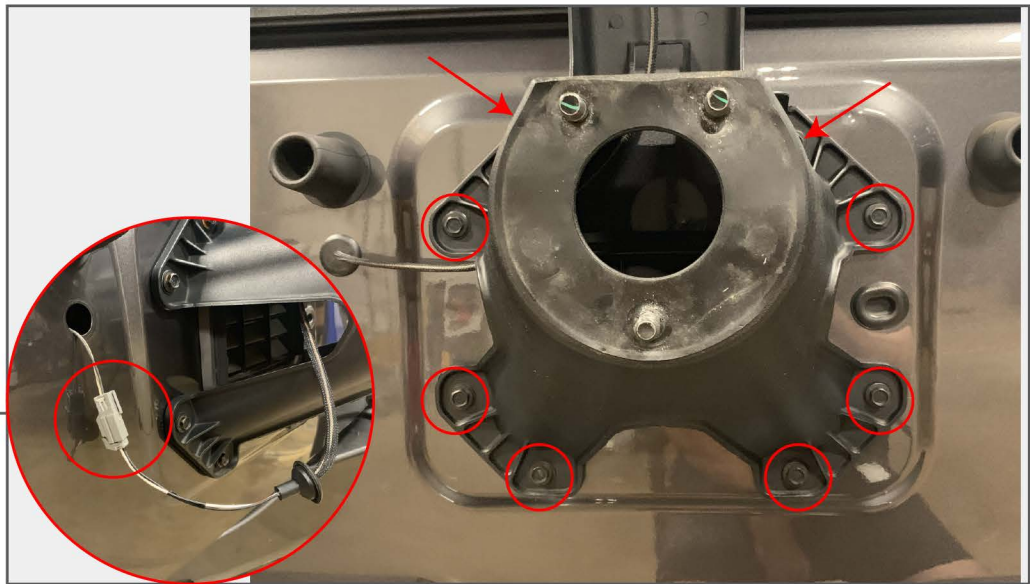
SKU # J133624

**STEP 1**



Begin by removing the factory spare tire. Using a 19 mm socket, remove the (3) lug nuts securing the tire to the vehicle.

**STEP 2**



Carefully remove the wiring grommet from the tailgate and disconnect the third brake light. Then, using a 13mm socket, removed the (8) bolts securing the factory tire carrier to the vehicle.

**STEP 3**



Using a 8mm socket, remove the (4) bolts securing the factory license plate housing to the vehicle. Unclip the wiring connection from the back of the housing and remove.

**STEP 4**



Using a flat head screw driver, carefully pry the screw clips from the vehicle. Next, thoroughly clean the mounting location soap and water. **\*\*Note: A clean surface is extremely important. It is recommended to clean the surface is isopropyl alcohol to ensure the cleanest possible mounting surface.** Once dry, test fit the block off plate. Remove the tape backing and firmly press the block off plate to the vehicle.

**STEP 5**

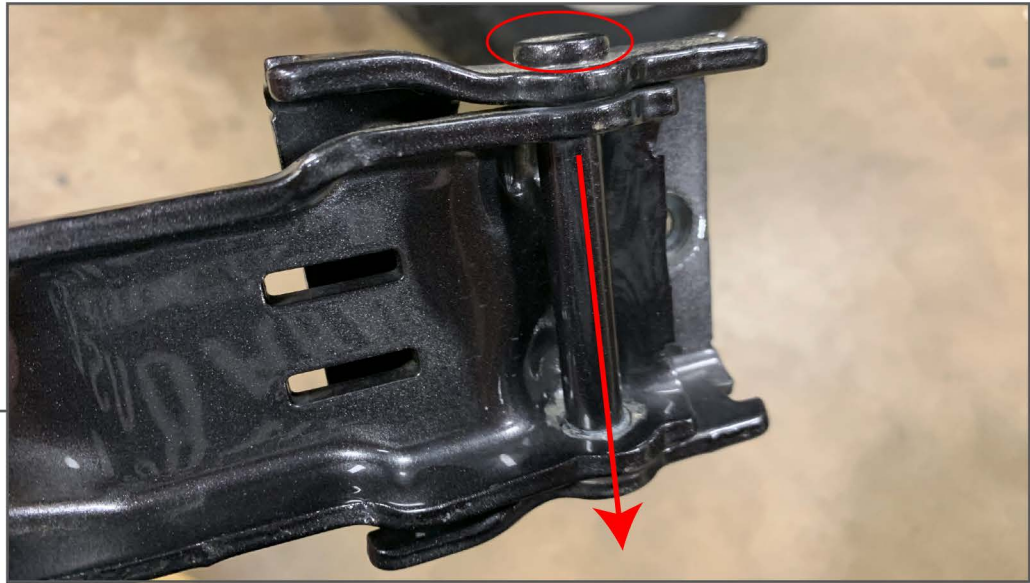


Carefully pry the plastic hinge covers from the vehicle exposing the tailgate hinges.

**STEP 6**



**\*\*Note:** Only remove (1) hinge at a time. Starting with the bottom hinge, use a 13mm socket to remove the (2) hinge bolts from the tailgate. Open the hinge to expose the (3) T50 torx Bolts securing the hinge assembly to the vehicle. Remove the assembly from the vehicle.

**STEP 7**

Using a rotary tool carefully put the top off the hinge pin. Then using a punch and hammer, drive the hinge pin out of the assembly. **\*\*Note: This hinge pin will not be reused.**

**STEP 8**

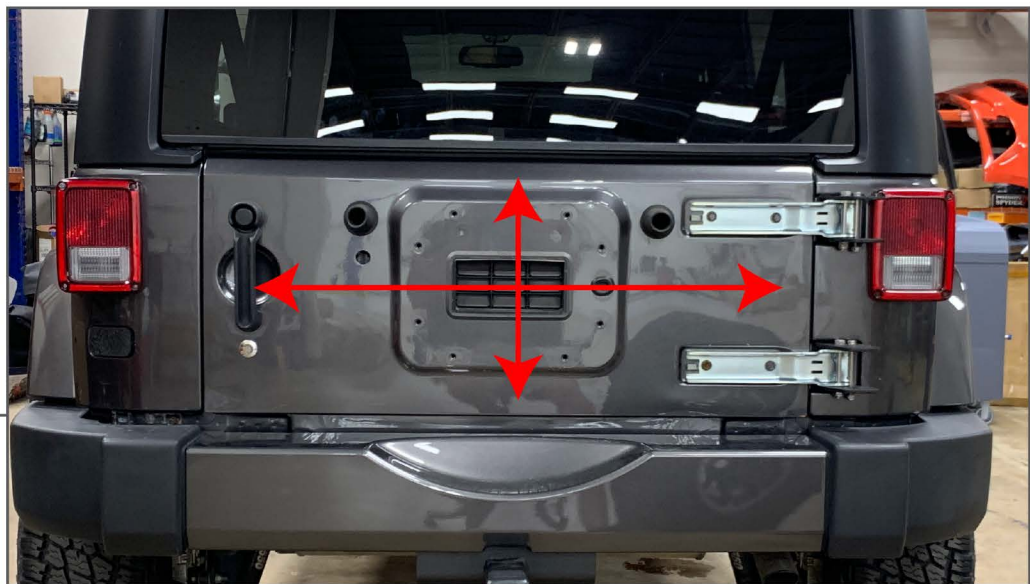
Install the supplied hinge bracket to the vehicle using the factory T50 Torx bolts. Then install the tailgate portion of the factory hinge on to the new bracket using the supplied hardware (1) M10x100mm Bolt, (2) Flat Washers, (1) Lock Nut per hinge. Tighten using a 17mm wrench and socket. Reinstall the hinge to the tailgate using the factory hardware removed in step 6.

**STEP 9**



Repeat steps 6-8 on the other hinge.

**STEP 10**



Once the hinges are reinstalled, adjust the tailgate side-to-side and up-and-down so that the tailgate engages the factory latch smoothly. **\*\*Note:** There is a lot of adjustment in the factory hinges, adjust as needed.

**STEP 11**

Next, install the carrier stop bolts (1) M10x100mm bolt, (2) Flat Washers, (1) Lock Nut per bracket. Tighten using a 13mm wrench and socket.

**STEP 12**

Install the carrier to the hinges using (1) M14x110mm bolt, (2) Flat Washers, (1) Lock Nut per bracket. Tighten using a 22mm wrench and socket.

**STEP 13**

Using the supplied carrier pins, secure the carrier latch to the tire carrier. Apply painters tape to the vehicle behind the latch mounting location. Align the latch location so that it matches the hinge location. Using a marker, mark where the holes will be. \*\*Note: Once the carrier is loaded, you will need to lift the carrier into the latch. The weight of the carrier and tire will make the assembly sag, this is completely normal for this type of tire carrier and is to be expected.

**STEP 14**

Open the carrier to expose the drill locations made in step 13. Using a 7/16 drill bit drill the holes for the supplied rivnuts.

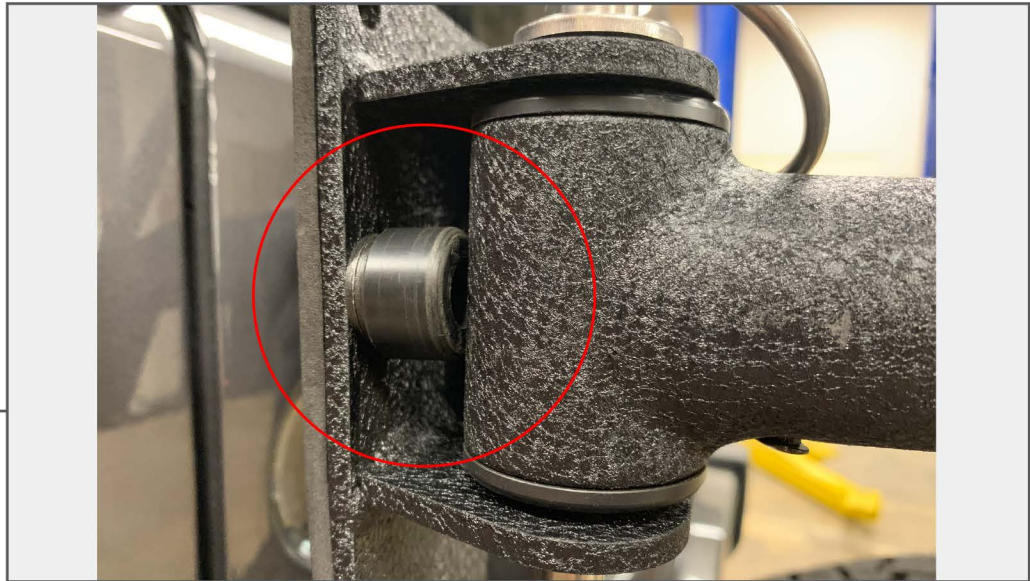


**STEP 15**

Install the supplied rivnuts using the supplied rivnut tool. Insert the rivnut into the pre-drilled holes. Thread the rivnut tool into the rivnut. Using a 16mm wrench, hold the nut in place while turning the head of the bolt with a 17mm ratchet. Tightening the bolt will clamp the rivnut against the sheet metal.

**STEP 16**

Install the foam backing to the latch prior to installing it vehicle using the (6) M8x25mm Bolts, (6) Flat washers, and (6) Lock Washers. Tighten using the supplied Allen wrench.

**STEP 17**

Install the latch bumpers using the supplied M4 Allen bolt. If necessary, install a washer behind the bumper so that the carrier just barely makes contact when the carrier pins are installed.

**STEP 18**

Install the tire mount on the carrier using the supplied (4)M12x80mm, (8) Flat Washers, and (4) Lock Washers. Tighten using a 18mm Wrench and 19mm Socket.

**STEP 19**

Install the wheel/tire to the wheel mount using the plastic hub locator, large washer, and wing nut. The wheel's outer face will be towards the tailgate. \*\*Note: Ensure the plastic isolator is centered in the wheel and the wing nut is tight.

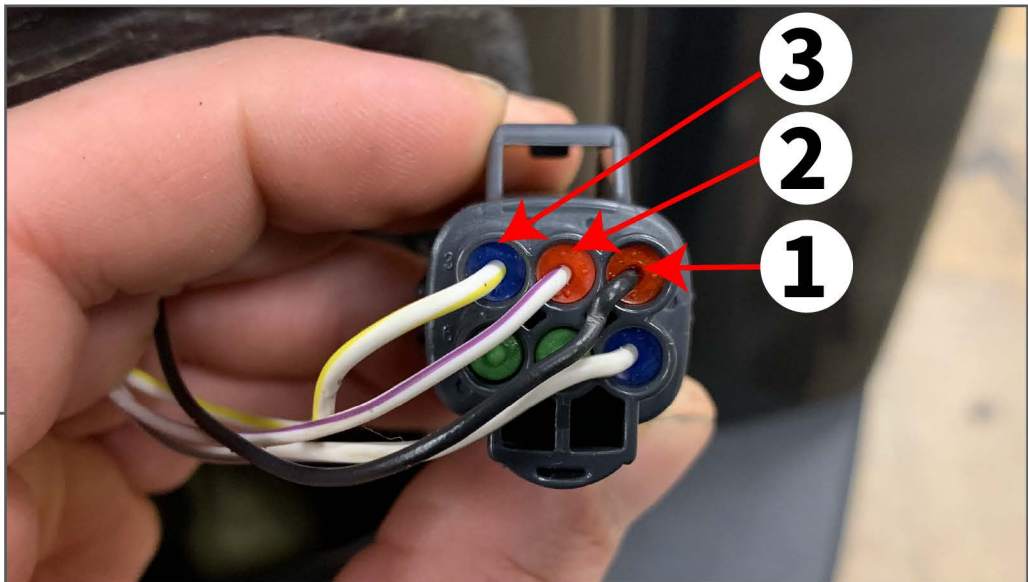
**STEP 20**

Next, install the license plate using the supplied license plate lights. The lights will double as the mounting hardware. Tighten using a 12mm wrench. Install the supplied third brake light lights, press the grommet into the carrier and then insert the lights through the grommet this will secure them in place.



**STEP 21**

Feed the license plate and third brake light wires between the bumper and the body. Locate the plastic panel under the rear quarter panel. Drill a small hole through the panel and feed the wires up to the brake light wiring harness. Remove the (2) screws securing the tail light to the vehicle. Its tight with the new bracket but you can still remove the light. Locate the wiring harness and follow the wiring instructions below.



**STEP 22**

Using the supplied scotch lock connectors wiring the license plate and third brake lights as follows:

<b>License Plate Lights -</b>	<b>Tail Light Plug</b>
Black -	Black (1)
Red -	White/Purple (2)

<b>Third Brake Light -</b>	<b>Tail Light Plug</b>
Black -	Black (1)
Yellow -	White/Yellow (3)