



HIGH CLEARANCE CAT-BACK EXHAUST

(2018-2019 WRANGLER JL)

INSTALLATION INSTRUCTIONS

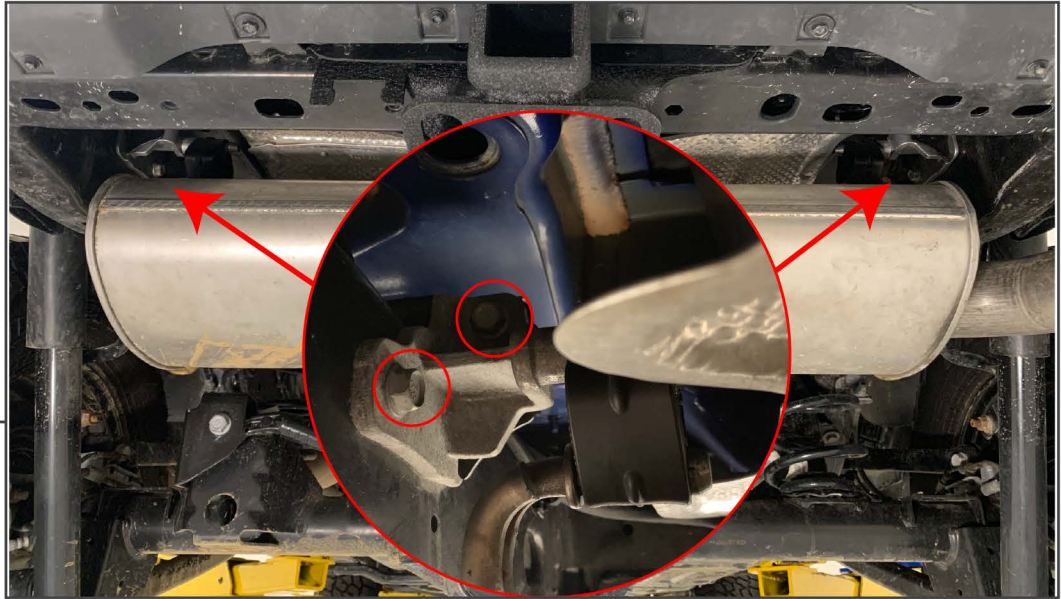
CONTENTS

- (1) Muffler
- (1) Straight Pipe
- (1) Axle Pipe
- (1) Tail Pipe
- (3) 2.5" Band Clamps

TOOLS REQUIRED

- Jack and Jack Stands
- Pry Bar
- 13mm & 15mm Socket and Ratchet
- Torque Wrench

SKU # J132857-JL

STEP 1

Begin by raising and supporting the vehicle using a Jack and Jack Stands. Locate both exhaust hangers (left and right side). Remove (2) 13mm bolts securing each hanger to the vehicle. Only the left side hanger will be reused.

STEP 2

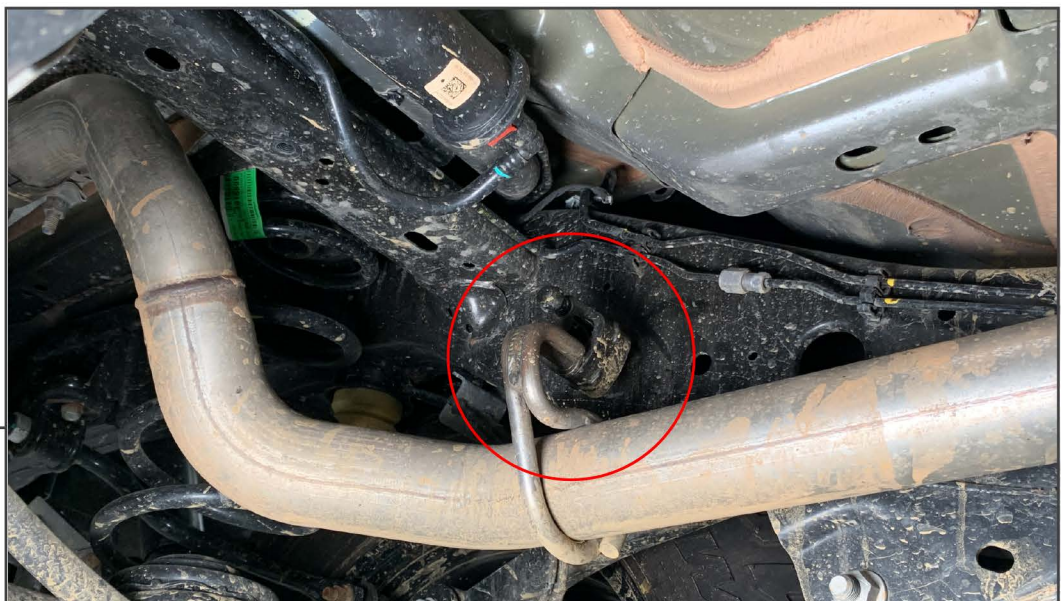
Using a 15mm socket, loosen the exhaust clamp located above the rear axle. Then, remove the muffler from the vehicle.

STEP 3



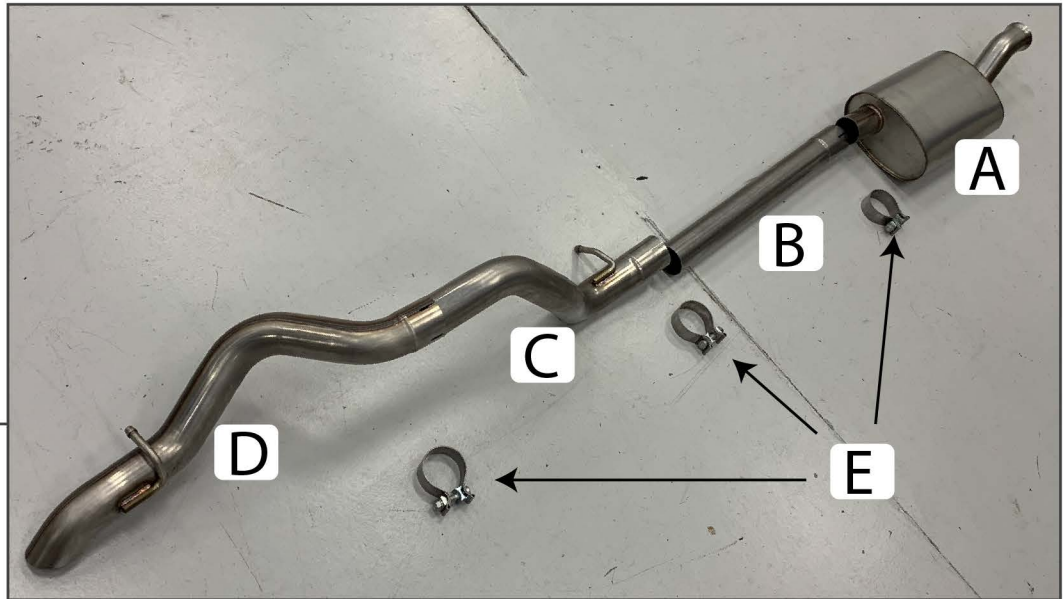
Using a 15mm socket, loosen the exhaust clamp located in front of the factory resonator.

STEP 4



While supporting the exhaust, use a pry bar to disconnect the exhaust from the exhaust hanger. Carefully remove the exhaust from the vehicle. Exhaust hanger will be reused.

**Exhaust
Diagram**



- A - Muffler
- B - Straight Pipe
- C - Axle Pipe
- D - Tail Pipe
- E - 2.5" Band Clamps

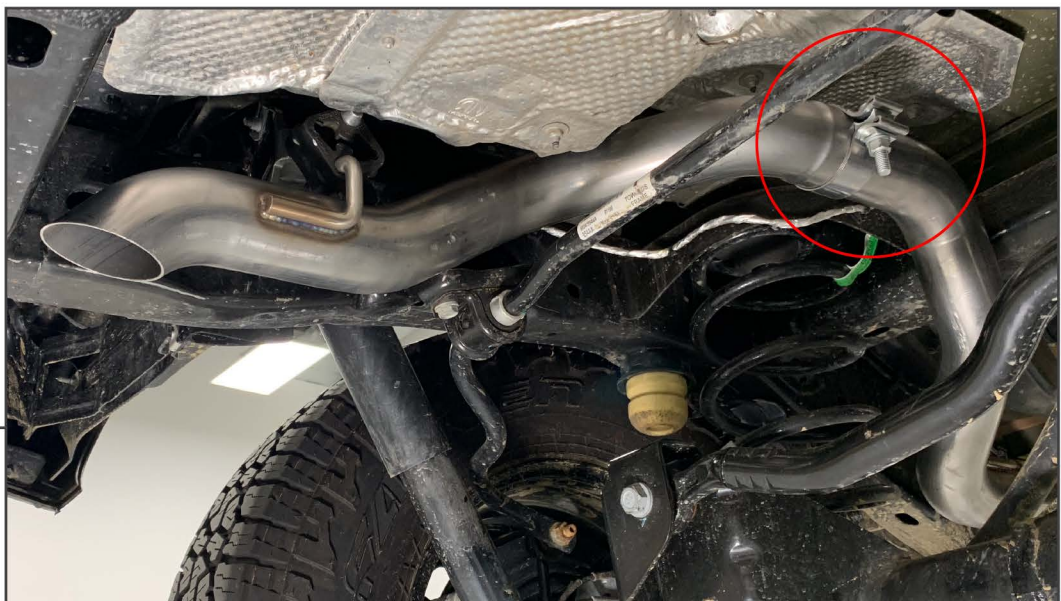
STEP 5



Loosely assemble the muffler (A) and Straight Pipe (B) using (1) Exhaust clamp (E). Loosely install this assembly to the factory exhaust using the factory clamp.

**STEP 6**

Loosely join Axle Pipe (C) to the previous assembly using (1) Exhaust Clamp (E). Reuse the factory rubber exhaust hanger removed in Step 4.

**STEP 7**

Install the exhaust hanger removed in Step 1 to the Tail Pipe (D). Loosely join the Tail Pipe (D) with the Axle Pipe (C) Using the last Exhaust Clamp (E). Once the exhaust is assembled, align all the pipes to ensure the most clearance around all chassis components. Then torque all Exhaust Clamps (E) to 45 Ft. Lbs. Installation is now complete.