



REPLACEMENT SHOCKS

(2007-2018 WRANGLER JK)

INSTALLATION INSTRUCTIONS

CONTENTS

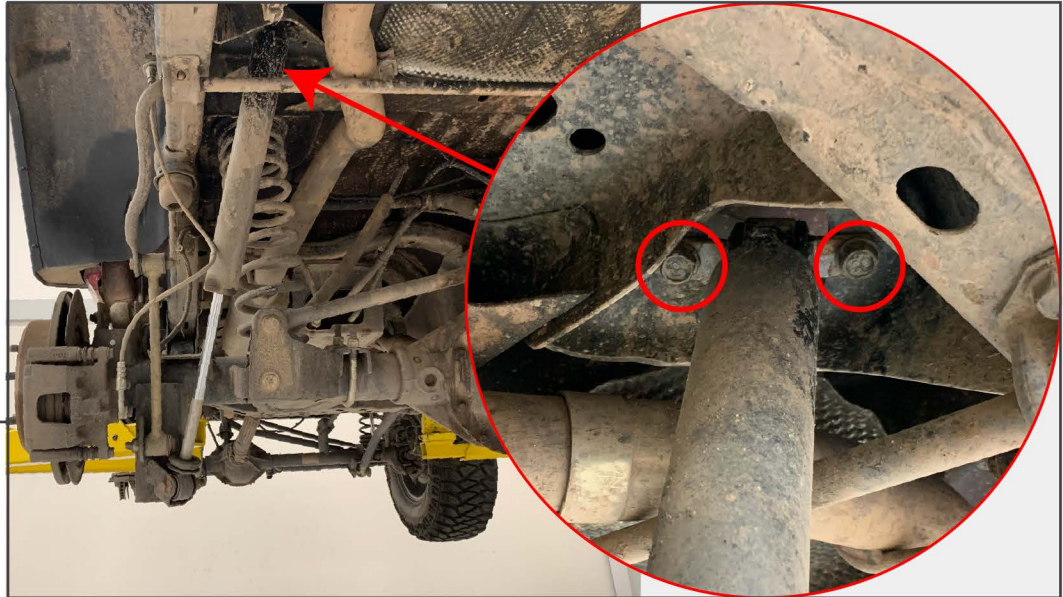
(2) Rear Shocks

TOOLS REQUIRED

- Jack
- Jack Stands
- Torque Wrench
- Metric Socket Set (15-22mm)
- Metric Wrenches/ Adjustable Wrench

SKU # J132850, J132852, J132854

STEP 1



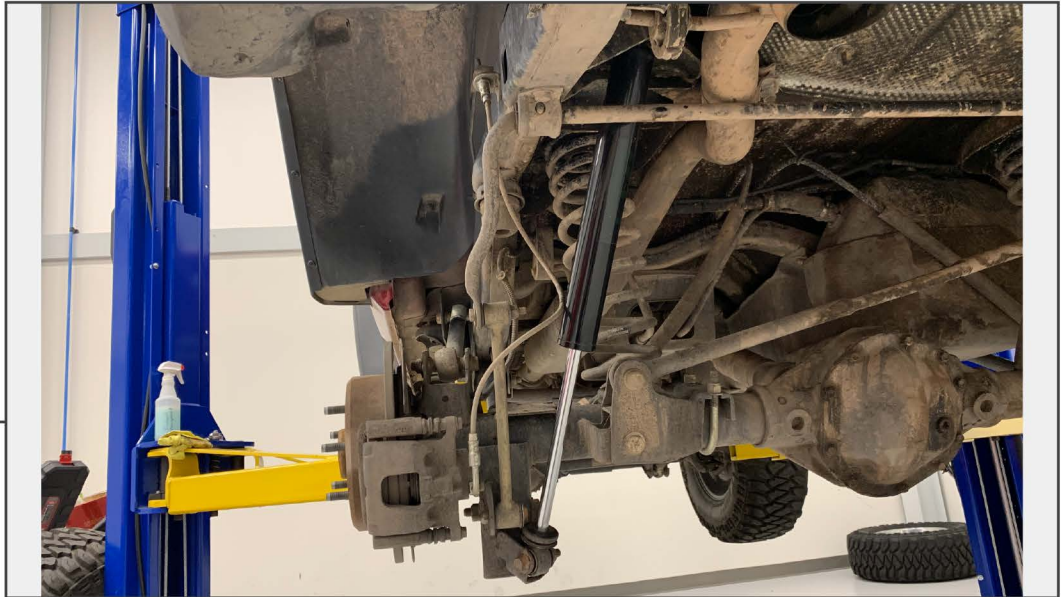
Raise and support the vehicle using a Jack and Jack Stands. Remove the wheel for better access to the shock hardware. Remove the (2) bolts securing the upper shock to the vehicle.

STEP 2



Remove the lower nut and bolt from mounting bracket and remove the shock from the vehicle.

STEP 3



Reinstall the upper shock bolts torque to 37 ft. lbs. Loosely Install the lower bolt. Reinstall the wheel, torque lug nuts to 100 ft. lbs. Remove the Jack and Jack Stands and lower the vehicle. Then, tighten the lower bolt to 56 ft. lbs.