

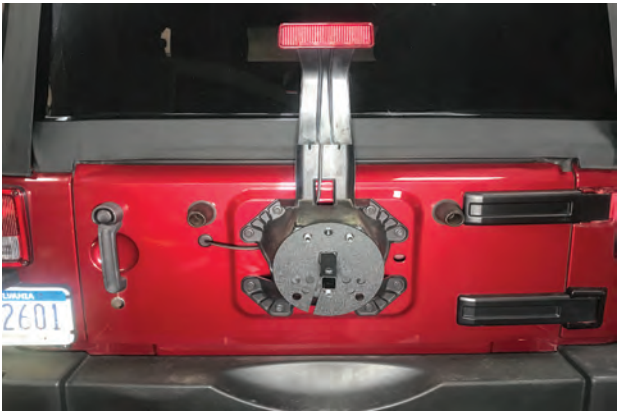
07-18 JK Spare Tire License Plate Mount w/ Lighting Installation Guide

Contents:

- (1) License Plate Mount
- (1) LED License Plate/Brake Light Assembly
- (4) M6x1.00 20mm bolts
- (4) M6x1.00 lock nuts
- (3) Scotch-Locks
- (3) 50mm Shrink Wrap tubes

Tools Required:

- Phillips Screwdriver
- 21mm Socket
- Breaker Bar
- Torque Wrench



//Step 2:

Using the provided base plate, place the plate onto the original spare tire holder lug studs.



//Step 4:

Attach the license plate light and the license plate to the mounting plate by using (4) M6x1.00 20mm bolts, and (4) M6 lock nuts.



// Step 1:

Begin by removing the spare tire off the mount using a 21mm socket and a breaker bar, and then remove the lug nuts. Lift the spare tire off the vehicle.



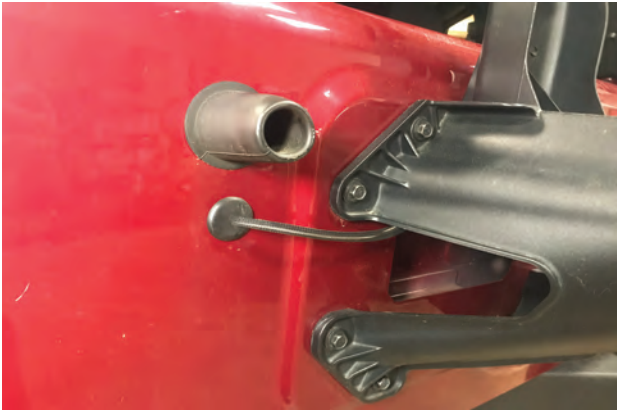
//Step 3:

Remove the spare wheel center cap, then reinstall wheel onto the carrier, with the license plate base plate in the middle. Reinstall and tighten lug nuts to OE specifications.



//Step 5:

Install license plate mount onto the base plate using provided wing nut and tighten until secure. Route wiring behind the spare tire.



//Step 6:

Route the wiring behind the spare tire mount, and route the wiring into the factory grommet in the tailgate for the 3rd tail light. Run the wiring towards the right side tail light on the vehicle.



//Step 6 (Wiring):

To wire the light to the vehicle, use the provided (3) Scotch-locks and tap into the vehicles wiring harness.

Wiring harness on License Plate Light to vehicle:

- Red to White/Yellow Stripe
- Green to White/Purple Stripe
- Black to Black