

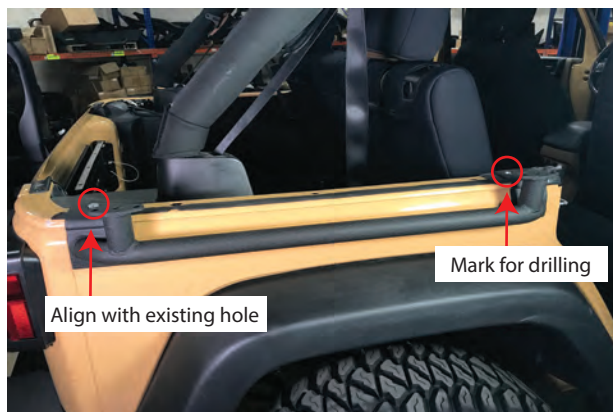
JK Wrangler Roof Rack with Roll Bar Installation Guide

Contents:

- (28) M10x1.50 35mm Bolts
- (4) M8x1.25 20mm Bolts
- (56) M10 Washers
- (28) M10 Lock Washers
- (28) M10x1.50 Nuts
- (8) M8x1.25 Nuts
- (4) M8 Washers
- (6) Adjustment Pads
- (6) Flange Spacers

Tools Required:

- 14, 17mm wrench/socket
- T40 Torx socket
- 5, 8mm Allen key/socket
- Drill
- 5/16 Drill bit
- Panel removal tool



//Step 2:

Using the side rails, line up the rail to the vehicle ensuring panel is flush with the body, line up the rail with the furthest rear hole in the vehicle body. While that is aligned, put a mark where to drill the hole towards the front.

****Note:** A second set of hands may be helpful for this step, or installing a bolt in the rear alignment hole so marking the hole towards the front is easier.



//Step 4:

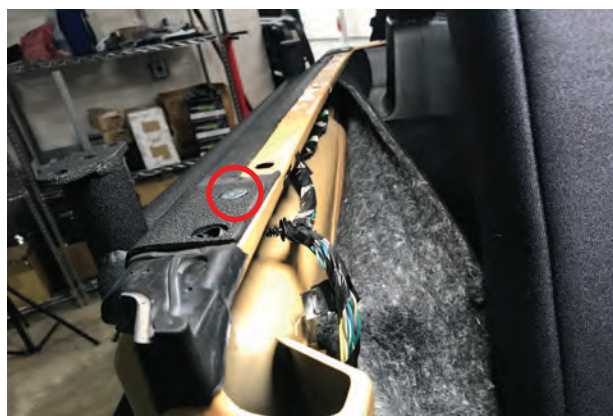
Once the side rails are installed, reinstall the hard top back onto the vehicle using the (8) T40 Torx bolts. Once the top is reinstalled, using the roof rack supports, install them to the side rails on the vehicle using (4) M10x1.50 35mm bolts, (8) M10 washers, (1) lock washers, and (4) nuts per side. Also install (1) adjustment pad with provided jam nut per rack support.

****Note:** The supports are directional, see Step 5 for clarification.



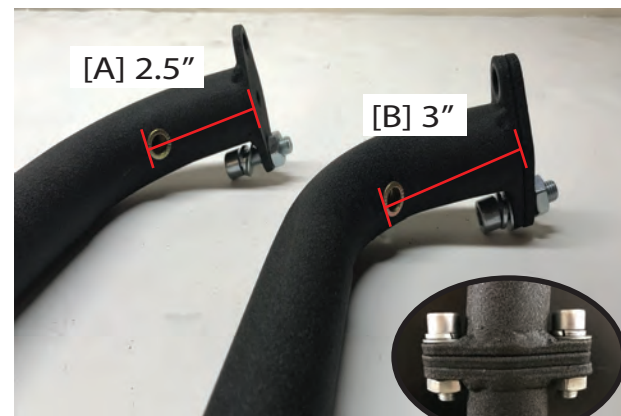
// Step 1:

Begin by removing the hard top, starting with the front Freedom Panels, then continue to the rear of the vehicle. Unplug the rear electrical connectors and remove the (4) T40 Torx bolts per side holding the top to the vehicle.



//Step 3:

Pull the carpet back on the vehicle and remove the plastic clip holding the wiring harness to the vehicle to prevent damaging the wiring harness. Drill the marked hole in the vehicles body panel using a drill and a 5/16ths drill bit. Once drilled, install (2) M8x1.25 20mm bolts, (2) M8 washers, and (2) M8 Lock Washers per side using a 5mm allen key and a 14mm wrench to secure bar to vehicle. Repeat procedure for opposite side.



//Step 5: Roof Rack Supports:

The (4) Roof Rack Supports are designated to one spot on the roof basket. The furthest rear supports [A] have a shorter angle (2.5" measured from adjustment pad insert to flange). While the supports closest to the rear doors [B] have a larger angle (3" measured from adjustment pad insert to flange.)

The supports closest to the rear doors have a flange spacer in between the basket and the side rail, while the rear most supports only have a flange spacer in between the side rail and the roof rack support.



// Step 6:

Once the side supports are installed, install the (2) adjustment pads onto the bottom of the basket using (1) jam nut per pad, then lift the basket onto the top of the vehicle.



// Step 8:

Remove the (2) T40 Torx bolts from the windshield cowl per side to begin installation of the windshield mounted supports. Once removed, install bracket into place, and use existing hardware to tighten to vehicle.



// Step 10:

Install the (2) freedom panel bars to the upper windshield bar and the basket using (8) M10x1.50 35mm bolts, (16) M10 washers, (8) M10 lock washers, and (8) M10 nuts.



// Step 7:

After the basket is on the roof, secure the side supports to the basket using (8) M10x1.50 35mm bolts, (16) M10 washers, (8) lock washers, and (8) M10 nuts.



// Step 9:

Install the upper windshield bar using (4) M10x1.50 35mm bolts, (8) M10 washers, (4) M10 lock washers, and (4) M10 nuts.



// Step 11:

Once all hardware is installed and tight, installation is complete.