

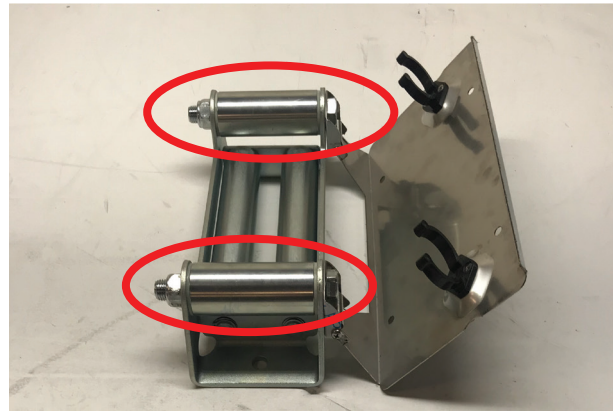
Winch Fairlead License Plate Mount Installation Guide

Contents:

- (1) Fairlead Mount
- (4) Plastic Roller Clamps
- (4) 1/4-20 Allen Head Bolts
- (4) 1/4-20 Lock Nuts
- (2) M16 140mm Bolts
- (2) M16 Lock Nuts
- (4) Phillips Screws
- (4) 8-32 Lock Nuts

Tools Required:

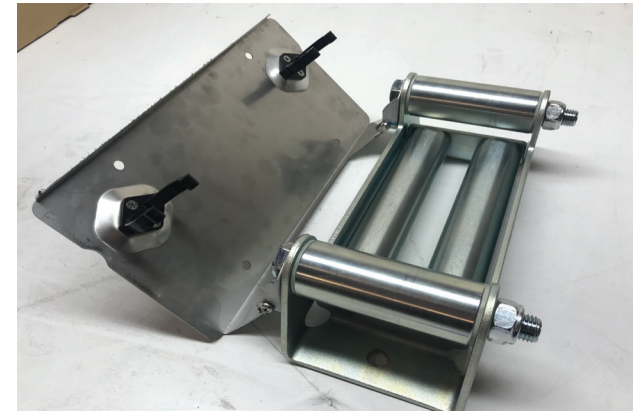
- Phillips Screwdriver
- 24mm Socket
- 24mm Wrench
- 11/32" Wrench
- 4mm Allen Key
- 11mm Wrench
- Snap Ring Pliers



//Step 2:

Remove the pins from fairlead using snap ring pliers. Once removed, align the mounting plate with the fairlead roller holes, and install (2) 140mm bolts and (2) M16 lock nuts using a 24mm wrench and socket.

****Note:** Make sure the head of the bolt is closest to the mounting plate. Tighten until secure, over tightening will prevent roller functionality.



//Step 4:

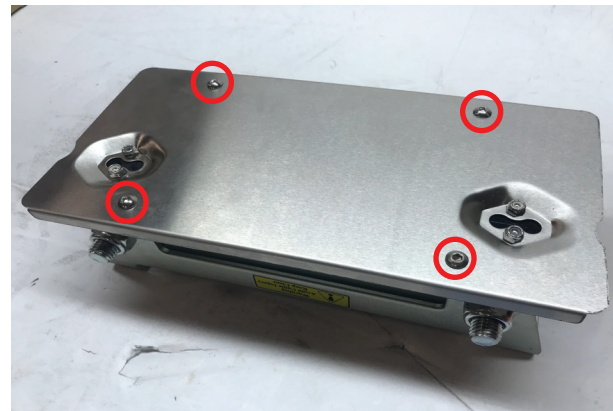
Once all bolts are secure, installation is now complete.



// Step 1:

Begin by attaching the (2) clamps onto the mount by using (4) phillips head screws and (4) 8-32 lock nuts.

****Note:** Do not over tighten these bolts.



//Step 3:

Using (4) 1/4"-20 bolts and lock nuts, secure license plate to mounting plate using a 4mm allen key and 11mm wrench.