

# 07-18 JK Avenger Hood Installation Guide

## Contents:

- (1) Avenger Hood
- (2) Hood Vents
- (3) Hood Insulation Pads

## Tools Required:

- 8, 10mm Sockets
- T50 Torx Socket
- Panel Pry Tool
- Flat Head Screwdriver
- Isopropyl Alcohol

**\*\*Test fit hood prior to painting.**

**\*\*Hood may require some massaging for best fit**



### //Step 1:

Remove the washer hose from the washer nozzle by pulling it out of the (2) holders and pull firmly to disconnect the nozzle from the hose.



### //Step 3:

Remove the (2) hood latch brackets from the original hood by removing (2) 10mm nuts per side. Set both brackets aside for now.



### //Fitment:

In the event of a misaligned hood, it may be necessary to massage the hood for a better fit. Once installed to check fitment, adjust the hood as needed. If the sides are flared out near the cowl, gently press down to align the hood with the cowl and fender. Massage until panel gaps are even by gently pushing or pulling towards desired direction.



### //Step 2:

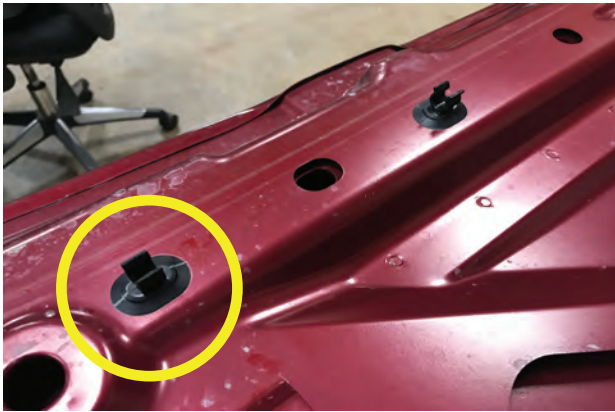
Remove the original hood from the vehicle by removing (4) T50 Torx bolts and lift hinges away, then lift hood off vehicle.

**\*\*Note:** Lay hood face down on a soft surface to transfer components to new hood.



### //Step 4:

Remove the hood spring and safety latch. Hood spring is held by (1) 8mm bolt, while the safety latch is secured by (1) 10mm bolt. Remove and set aside for now.



**//Step 5:**  
Remove (1) of the two washer hose hold downs by using a panel pry tool.



**//Step 7:**  
Install the hood spring and safety latch by reusing (1) 8mm bolt for the hood spring, and (1) 10mm bolt for the safety latch.



**//Step 9:**  
Install the (3) heat insulation pads onto the hood. Peel the film back and apply the adhesive to the hood after cleaning with isopropyl alcohol.



**//Step 6:**  
Install the (2) hood latch brackets to the new hood by reusing (2) 10mm nuts per side.



**//Step 8:**  
Install (2) washer nozzles into the hood until they click into place.



**//Step 10:**  
Clean the highlighted area with isopropyl alcohol.



**//Step 11:**  
Peel the double sided tape film off of the vent and apply firm even pressure to the vent to secure it to the hood.



**//Step 13:**  
Reinstall the windshield washer line into the washer nozzle, and secure the front hood hold downs. Installation is now complete.



**//Step 12:**  
Lift the hood onto the vehicle. Lower the hinges onto the hood once aligned, and reinstall (2) T50 Torx bolts per side.