

07-18 JK Roof Basket Installation Guide

Contents:

- (5) M6x1.00 Bolts
- (10) M6 Washers
- (5) M6 Locking Nuts
- (8) M10x1.50 25mm Bolts
- (8) M10 Lock Washers
- (8) M10 Washers
- (8) M10 Lock Nuts

Tools Required:

- 10, 17 mm socket/wrench
- 4, 6 mm Allen Key



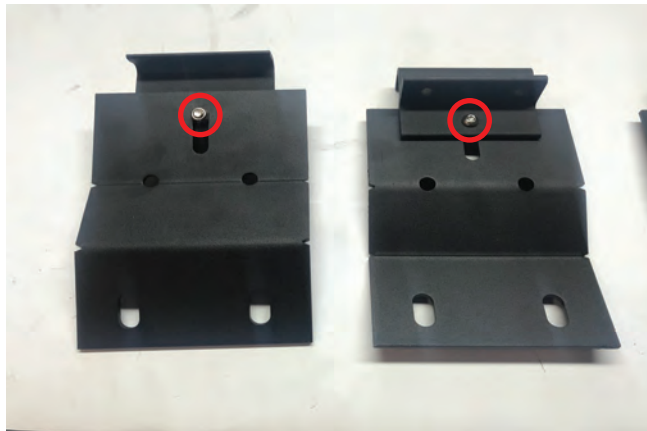
//Step 2.

Install (2) M10x1.50 25mm bolts, lock washer, washer, and lock nuts per bracket into the basket. Secure loosely to all 4 brackets as adjustment will have to be made later.



//Step 4.

Tighten the lower (4) M6x1.00 bolts on all 4 brackets, then proceed to tighten the remaining (8) M10x1.50 bolts attached to the basket. Once secured, installation is complete.



// Step 1.

Install (1) M6x1.00 bolt, (2) M6 Washers, and (1) M6 Lock nut to attach the door channel bracket to the roof basket bracket. Install bolts loosely as adjustment will have to be made later.



//Step 3.

With the vehicle doors open and brackets loose, lift the basket onto the roof of the vehicle. Tuck the brackets into the door channels.

****Note:** Using the shipping packaging and masking tape can prevent damage to the roof during basket alignment and bracket movement.

