

07-18 JK HD Spare Tire Mount Installation Guide

Contents:

- (1) Base Plate
- (1) Stud Plate
- (1) Intermediate Plate
- (2) 3rd Brake Light Brackets
- (1) Foam Pad
- (4) M12x1.75 40mm Bolts
- (7) M10x1.50 20mm Bolts
- (2) M6x1.00 20mm Bolts
- (4) M12 Washers
- (14) M10 Washers
- (4) M6 Washers
- (7) M10x1.50 Lock Nuts
- (2) M6x1.00 Lock Nuts
- (3) 19mm Lug Nuts
- (1) 4mm Allen Key

Tools Required:

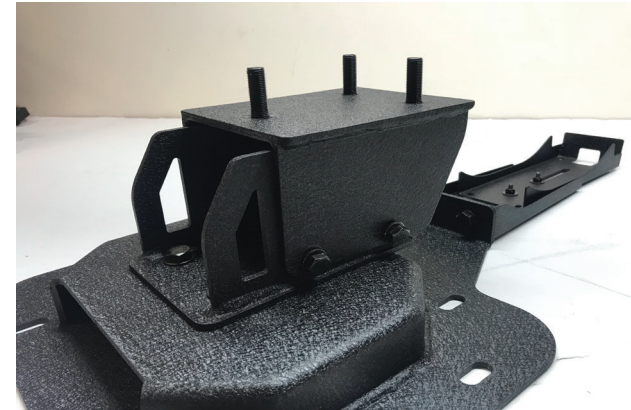
- 13, 17, 18, 19mm wrench/socket
- 4mm Allen key/socket
- Phillips head screwdriver



//Step 2:

Install the intermediate plate onto the base plate using provided (4) M12x1.75 40mm bolts, and (4) M12 washers.

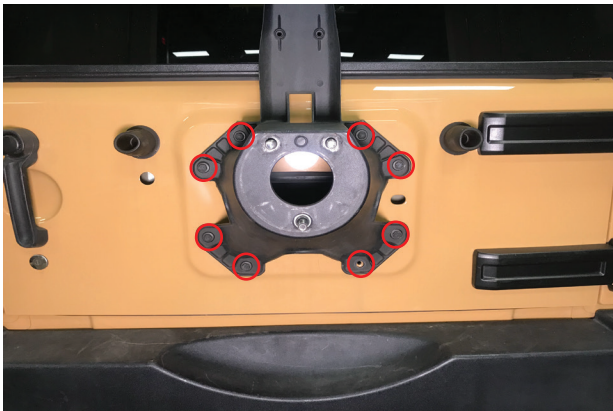
**Note: The bolts can be secured in any plate alignment, depending on the tire size.



//Step 4:

Install the stud plate onto the intermediate plate using (5) M10x1.50 20mm bolts, (10) M10 washers, and (5) M10 lock nuts.

**Note: The bolts can be secured in any plate alignment, depending on the tire size.



// Step 1:

Begin by removing the spare tire, then unplugging the 3rd brake light at the top by pressing on the clip. Once unplugged, remove the (8) 13mm bolts holding the original mount to the tailgate. Set assembly aside for now. Remove vent behind original tire mount by using a pry tool. Pry around the edges and pull lightly to release it from the tailgate.



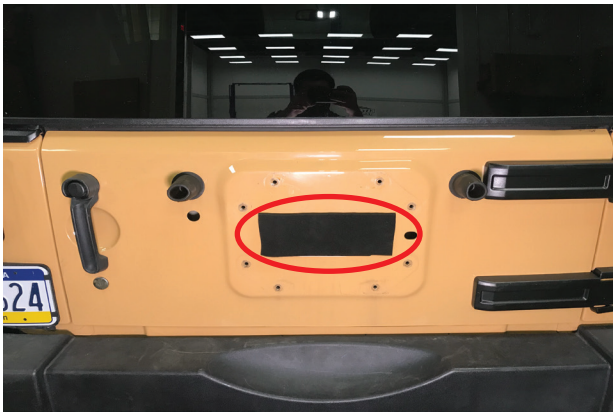
//Step 3:

Using (2) M10x1.50 20mm bolts, (4) M10 washers, and (2) M10 lock nuts, install the lower 3rd brake light bracket to the base plate. Once secured, attach the upper 3rd brake light bracket to the lower using (2) M6x1.00 20mm allen bolts, (4) M6 washers, and (2) M6 lock nuts.



//Step 5:

Remove the (2) 3rd brake light screws from the original tire mount using a Phillips screwdriver. Once removed, reinstall the light and screws into the new mount.



//Step 6:

Make sure all plates are secure and all bolts are tight. Install the provided foam pad over the previously vented area using the double sided tape on the pad. Make sure to clean the area prior with an alcohol wipe.



//Step 8:

Reinstall spare tire to tire mount using (3) provided 19mm lug nuts and torque to 95ft/lbs. Installation is now complete.



//Step 7:

Once the foam pad is installed, while holding the tire mount, install the mount to the tailgate using the original (8) 13mm bolts. Once the tire mount is secured to the tailgate, plug the 3rd brake light back into the vehicles harness.