

## **JL 18-19 4 Door Side Step Bars**

### **(1) Contents:**

**1x Driver Side Bar**

**1x Passenger Side Bar**

### **(2) Tools required:**

**a. 13mm Long Socket**

**Wrench;**

**b. 10mm Wrench;**



**(3) Installation time: About 1 hour by 2-3 persons.**

**( Installation time is difference as individual as person )**

## (4) Installation instruction:

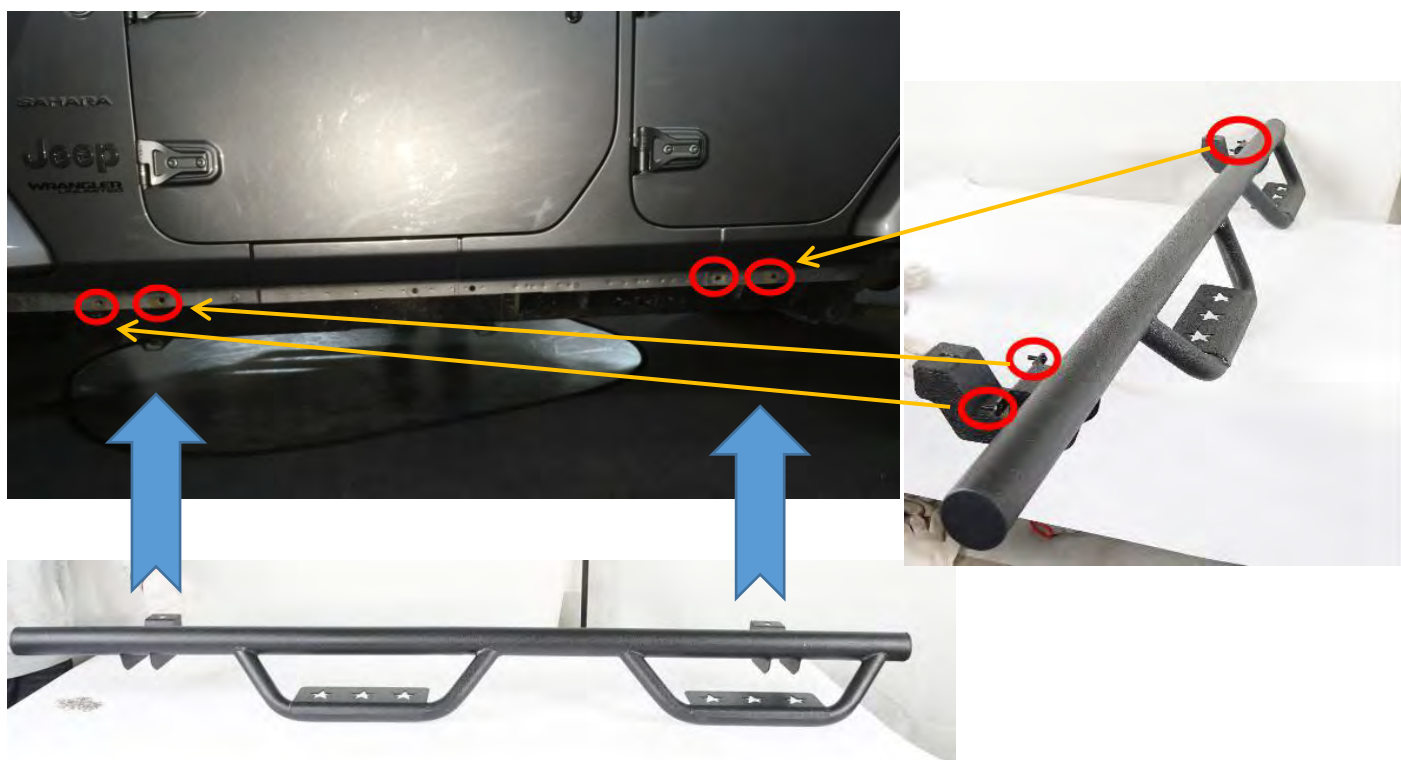
### Step 1:

**Remove the original side step bars first.**



### Step 2:

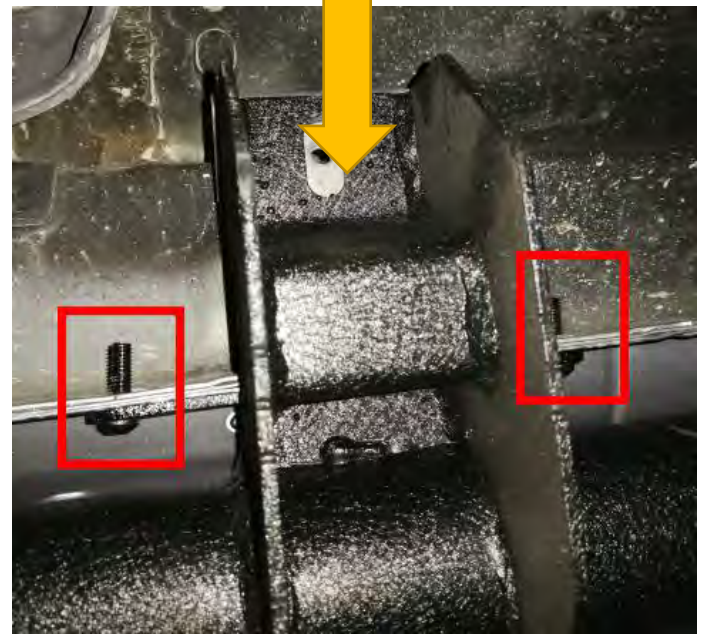
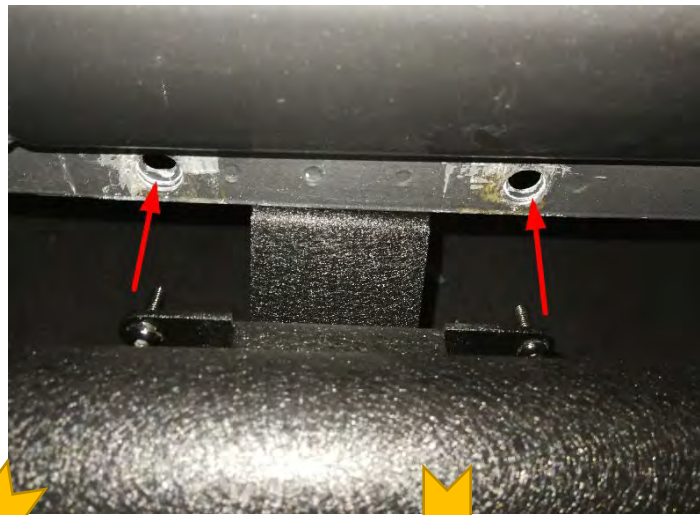
**Install the driver side first. As shown below.**





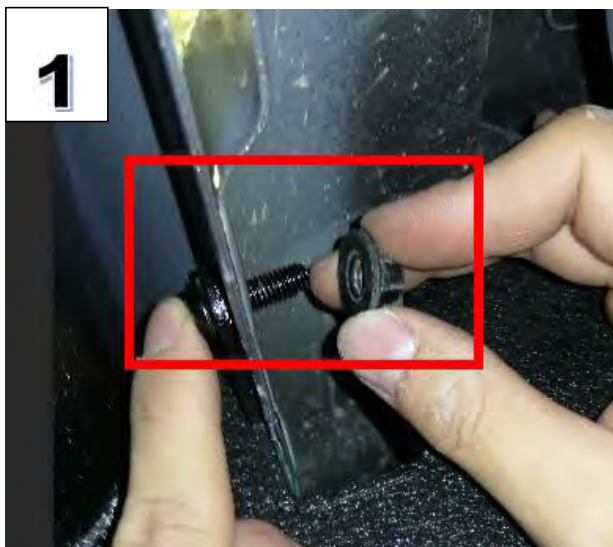
**Step 3:**

**Bolt onto the factory mounting points on your Wrangler.**

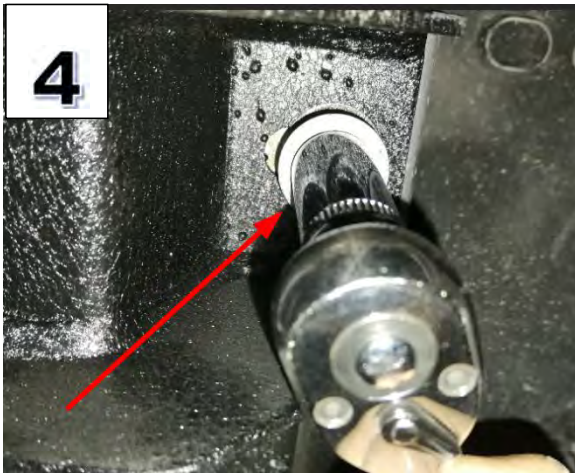
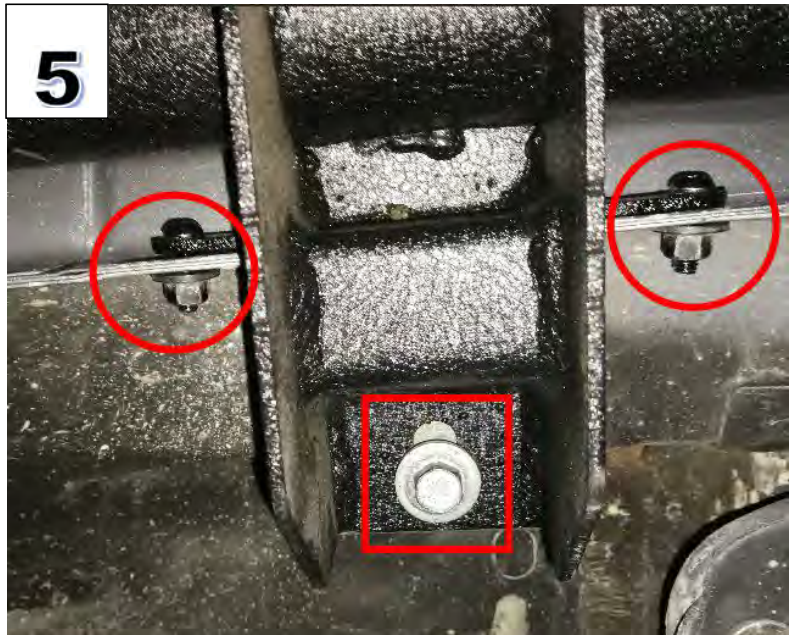
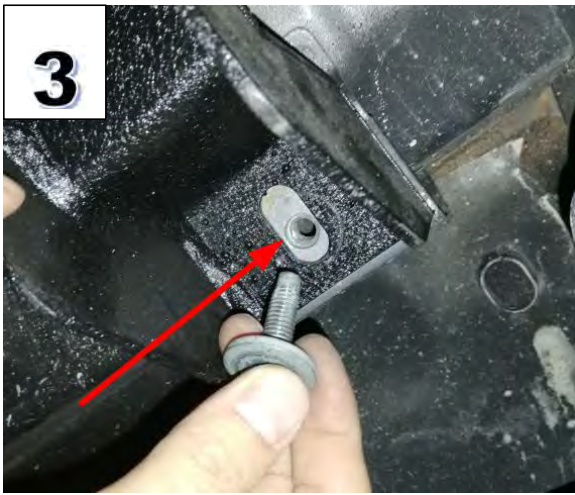


**Step 4:**

**Tighten it with the original bolts. As shown below (Figure 1 to Figure 5).**







**Step 5:**

**Repeat above steps for the passenger side.**

**Step 6:**

**Installation completed.**

