

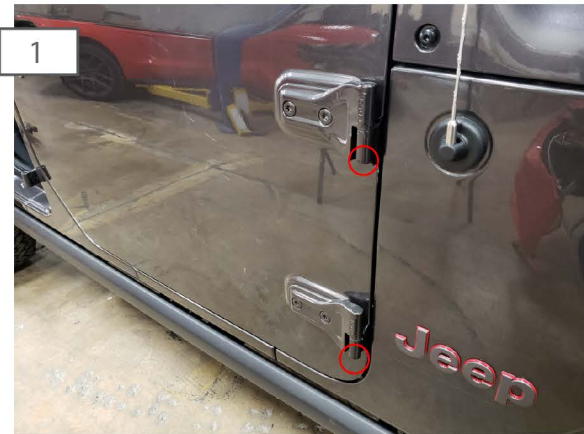
# Jeep Wrangler (18+ JL) Tubular Doors - Front

## Contents:

- |                          |                        |
|--------------------------|------------------------|
| (1) Left Front Door      | (4) M6x1.0x25mm Screws |
| (1) Right Front Door     | (4) M6 Flat Washers    |
| (2) Mirror Mounts        | (4) M6 Lock Washers    |
| (2) Latches              | (2) M4x0.7x20mm Screws |
| (6) Latch Spacers        | (6) M4 Flat Washers    |
| (2) Door Straps          | (2) Allen Wrenches     |
| (2) Door Rubber Stoppers |                        |

## Tools Required:

- |                         |                         |
|-------------------------|-------------------------|
| (4) M10x1.5x20mm Bolts  | Trim Panel Removal Tool |
| (4) M10 Flat Washers    | T50 Torx Bit            |
| (4) M10 Lock Washers    | T40 Torx Bit            |
| (2) M8x1.25x20mm Screws | Rubber Mallet           |
| (4) M8 Lock Nuts        | 10mm Socket             |
| (6) M8 Flat Washers     | Ratchet                 |
| (2) M8 Lock Washers     |                         |



Begin by removing the T-50 Torx nuts on the bottom of the factory door hinges. These will not be reused.



Using a panel removal tool, pry the trim panel off.



Roll down the windows so that the door is easier to handle while removing it from the vehicle. Unplug the connector. Slide the hinge strap off the chassis mount.



Locate, and remove the T40 torx bolt securing factory door hinge stop. Lift the door up to remove it from the vehicle. Then reinstall the factory T40 torx bolt as a place holder to ensure it doesn't get lost.



Install the new door, you may need to use a rubber mallet to seat the door all the way onto the hinge. Use the supplied M8 nut and washer to secure the door to the hinge.





6

Install the rubber door stopper to the door using the M4x0.7x15mm screw, and M4 flat washer.



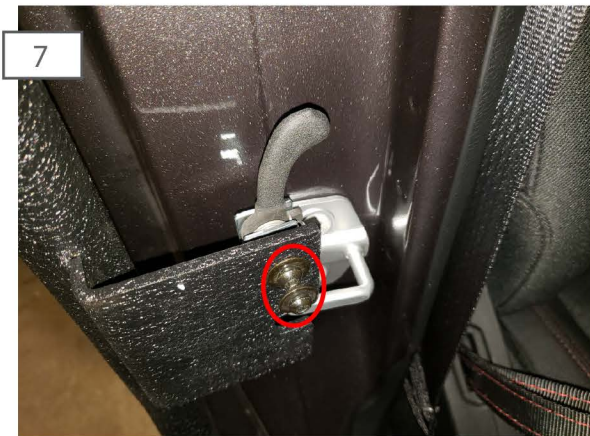
8

Align the door latch with the striker using the latch spacers as seen above. \*\*Note: Spending extra time aligning the latch to the striker will result in a smoother feel when opening and closing the door.



10

Optional: Install the mirror mount to the door using the (2) M10x1.5x20mm bolts, lock washers, and flat washers.



7

Loosely install the door latch using the M6x1.0x25mm screws, flat washers, and lock washers.



9

Install the door strap from the new Tubular door to the chassis mount. Reinstall the factory trim panel.



11

If purchased separately, install the JK mirrors to the mount using the (1) M8x1.25x20mm screw, flat washer, and lock washer. Installation is now complete.