

## 2.5" Lift Kit (07-18JK)

**\*\*Note: 2012+ may require exhaust extension to clear stock front drive shaft. J106226\*\***

### Front

With the vehicle in park (auto) or in gear (standard), chock the rear wheels and raise the front axle with a jack. Support with jack stands on the frame rails just behind the lower control arms. Remove the front tires.

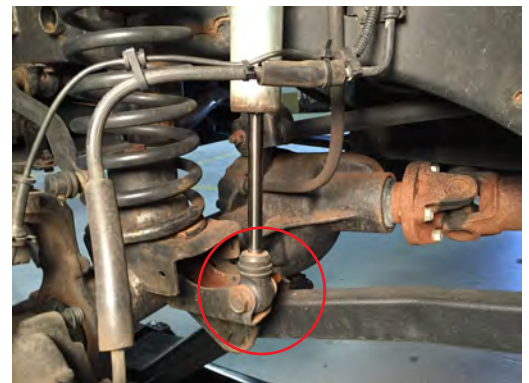
Remove the track bar from the axle. The factory hardware will be reused.



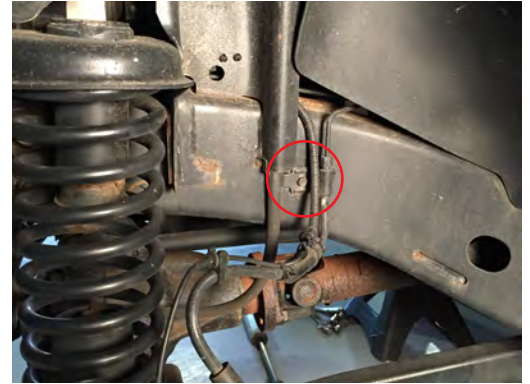
Remove the sway bar end links from the axle and the sway bar. The link will not be reused, but the hardware will be.



Remove the lower shock mount, followed by the upper mount. Hardware will be reused.



Remove the brake line bracket, this will allow you to lower the axle to remove the factory spring.



Remove the factory spring by lowering the axle.  
 \*\*Note: A spring compressor may be required to remove spring.



Center the supplied bump stop extension on the spring perch. Using a marker, scribe the hole location. Remove the extension and drill the hole location to 3/8".



Place the bump stop extension loosely in the supplied front spring(Long Spring). Do not try to bolt the extension down prior to installing the spring. With the bump stop in the spring install the spring into the factory location using the factory isolator. Position the bump stop over the pre-drilled hole and secure using the 3/8" x1.25" bolt, washers, lock washer, and nut. Ensure the



Remove the factory rear sway-bar end links, reinstall them on the front using the factory hardware. The swivel end mounts to the way bar, the other end mounts to the axle using factory hardware.



Using the supplied brake line relocation brackets and 1/4" x 1" bolts, washers, and nuts, relocate the factory brake lines. \*\*Note: Gently massage the factory brake line ensuring they do not get kinked. It is important to make sure the brake lines don't make contact with anything, this can cause the brake lines to rub through causing you to lose your brakes.



Reinstall the shocks, and track bar. Double check all bolts are installed and torqued to factory specifications prior to reinstall the front wheels and lower the vehicle.

With the Vehicle under its own weight, adjust the steering wheel so that is "staight". Locate and loosen the 15mm nuts securing the factory adjuster sleeve on the drag link. Rotate the adjuster sleeve between and 1/2 and a full rotation counter clockwise to get the vehicle to drive straight. This may take several adjustment to get correct. Always tighten the 15mm nuts to 45 ft/lbs before driving the vehicle.



## Rear

Chock the front wheels and raise the rear of the vehicle. Support vehicle with jack stands just in front of the rear control arms. Remove the wheels. Support the rear axle with a jack.

Loosen the track bar at the frame mount. Remove it from the axle mount bolt.



Remove the bolts holding the brake lines to the frame to allow for slack when lowering the axle.



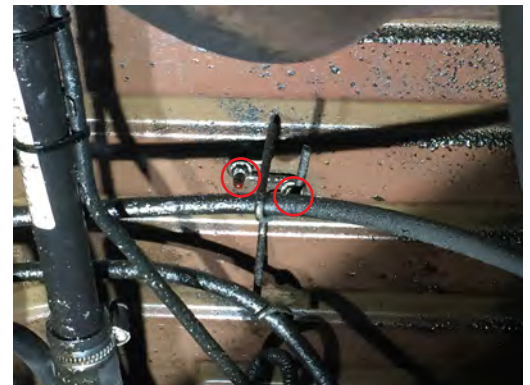
Remove the factory shocks from the axle and the upper mount. The factory hardware will be reused.



Remove the ABS wiring clip from the axle to allow more slack when lowering the axle.



Remove the 10mm nuts holding the brake cables to the body of the vehicle.



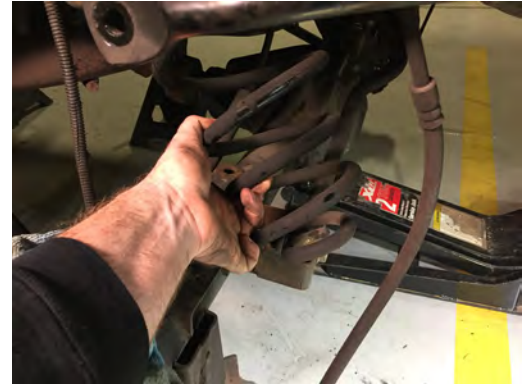
Remove the rear sway bar end link. This end link will be reused on the front sway bar.



Loosen the control arm bolts, but do not remove them.



Lower the rear axle slowly and remove the rear springs. Retain the upper rubber spring isolator for use with the new spring.



Install the supplied rear springs(short Spring), Be sure to reuse the upper rubber spring isolator. Install the rear spring retainers (Large Washers) using the supplied 3/8 bolt with lock washer and flange nut.



Install the brake line relocation brackets using the 1/4" x 1" bolt, washer, and lock nut.

**\*\*Note:** Gently massage the factory brake line ensuring they do not get kinked. It is important to make sure the brake lines don't make contact with anything, this can cause the brake lines to rub through causing you to lose your brakes.



Install the supplied bump stops using the supplied 5/16" x 1.5" bolts, lock washer, flat washer, and bolt.



Install the supplied sway bar end-link using the factory lower nut and bolt.

Upper Nut to Bar 66 ft-lbs  
Lower Nut to Axle 75 ft-lbs



Install the track bar bracket by removing the lower control arm bolt. Slide the bracket over the factory bracket. Install the lower control arm bolt. Loosely install the U-bolt on the axle. Then install the supplied 14mm bolt and spacer into the factory bolt location. Use the factory bolt and flange nut to mount the track bar in the lowest hole.



Reinstall the shocks. Double check all bolts are installed and torqued to factory specifications.  
\*\*Prior to tightening the lower control arm bolts, reinstall the wheels and tires. Lower the vehicle off the jack stands. With the vehicle at ride height, torque the lower control arm bolts to 125 ft/lbs.



#### **Prior to Driving**

- Professional Alignment
- Adjust Headlights
- Ensure adequate brake line slack when sway bars are disconnected.
- With sway bars disconnected ensure proper factory front drive-shaft clearance

#### **Maintenance:**

- First 200 miles, re-torque all fasteners.
- Every 3000 miles, re-torque all fasteners, and visually inspect suspension bushings for premature wear.

#### **Special consideration:**

With any change to the factory suspension geometry there will be increased wear and tear, things such as suspension bushings etc. Ensure vehicle safety by frequently inspecting wear and tear components.

**Tools Required:**

- Jack
- Jack Stands
- 1/4, 3/8, 1/2" Ratchets
- 1/4, 3/8, 1/2" Extensions
- Breaker Bar
- SAE and Metric Sockets (1/4" through 21mm)
- SAE and Metric Wrenches(1/4" through 21mm)

**JK Hardware List****Front****Spring**

- (2) Front Springs

**Front Bump Stop Extensions**

- (2) Round Bump Stop Extensions
- (2) 3/8-16 x1.25" Bolts
- (2) 3/8" Flat Washers
- (2) 3/8" Lock Washers
- (2) 3/8" Nuts

**Front Brake Line Relocation Brackets**

- (2) Relocation Brackets
- (2) 1/4" x 1" Bolts
- (4) 1/4" Washers
- (2) 1/4" Lock Nuts

**Rear****Rear Track Bar Relocation**

- (1) Track Bar Relocation Bracket
- (1) U-Clamp 1/2"-20
- (1) 1/2"-20 x 3.8125 Bolt
- (3) 1/2"-20 Lock Nuts
- (4) 1/2"-20 Lock Washers
- (1) Track Bar Crush Sleeve

**Spring**

- (2) Rear Springs

**Rear Spring Retainer**

- (2) Large Washers
- (1) Spanner
- (2) 3/8" x 1" Bolt
- (2) 3/8" Lock Washers
- (2) 3/8" Nuts

**Rear Bump Stop Extensions**

- (2) Rectangular Bump Stop Extensions
- (2) 5/16-18 x1.25" Bolts
- (2) 5/16" Flat Washers
- (2) 5/16" Lock Washers
- (2) 5/16" Nuts

**Rear Brake Line Relocation Brackets**

- (2) Relocation Brackets
- (2) 1/4" x 1" Bolts
- (4) 1/4" Washers
- (2) 1/4" Lock Nuts

**Rear Sway Bar End Links**

- (2) End Links
- (4) Sleeves