



## Adventure HD Rear Bumper & Tire Carrier (18+ JL)

### Contents:

- |                                |                          |                        |                              |
|--------------------------------|--------------------------|------------------------|------------------------------|
| (1) Rear Bumper & Tire Carrier | (4) M12x1.75x120mm Bolts | (6) M12 Lock Nuts      | (4) M6 Lock Washers          |
| (1) Hitch Assembly             | (4) M12x1.75x80mm Bolts  | (4) 9/16-18x40mm Bolts | (6) M6 Lock Nuts             |
| (1) Hitch Plate                | (2) M12x1.75x70mm Bolts  | (4) 9/16 Lock Washers  | (2) License Plate Lights     |
| (2) Block Off Plates           | (2) M12x1.75x40mm Bolts  | (8) 9/16 Flat Washers  | (2) Flood Light Mesh Grilles |
| (1) License Plate Bracket      | (1) M12x1.75x30mm Bolt   | (2) M6x1.0x25mm Bolts  | (1) Rear Camera Harness      |
| (1) Dual Nut Plate             | (28) M12 Flat Washers    | (6) M6x1.0x20mm Bolts  | (1) Heim End Link            |
| (4) M12x1.75x120 MM Bolts      | (6) M12 Lock Washers     | (2) M6x1.0x10mm Bolts  | (1) Tire Carrier Post        |
|                                | (6) M12 Nuts             | (14) M6 Flat Washers   | (1) Tire Carrier Hub & Base  |

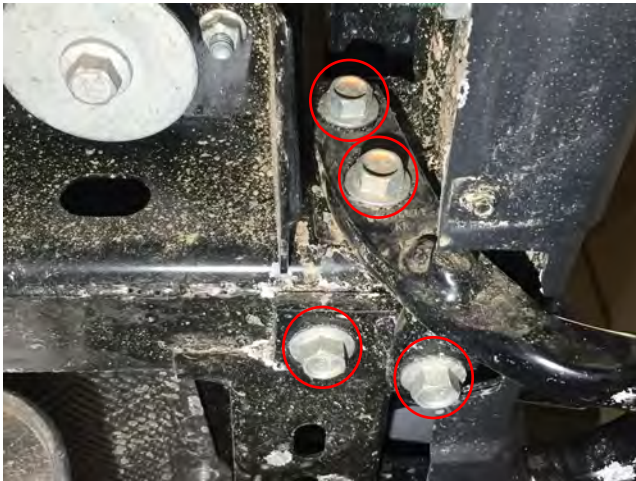
### TOOLS REQUIRED:

- 16mm, 18mm, 19mm, 21mm sockets
- Ratchet
- T40 Torx Bit
- T9 Torx Bit
- Trim Panel Removal Tool
- Clean Towel
- Cleaning Solution



### STEP 1 //

Locate the T40 torx lock screw on the camera cover, and turn it counter clockwise to unlock. Remove the camera cover by pulling away from the vehicle. Then remove the spare tire.



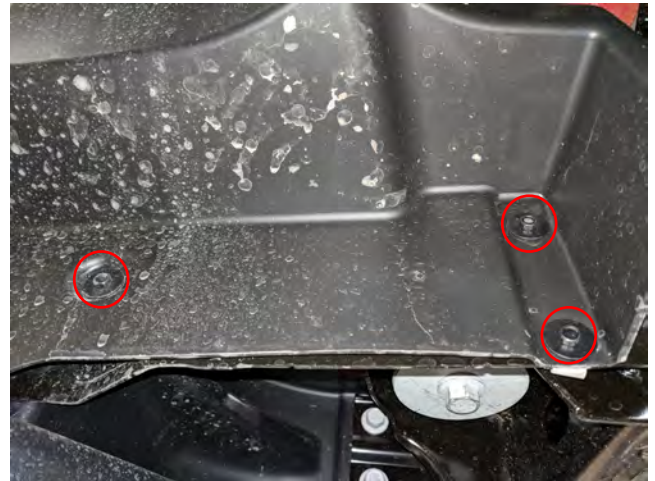
### STEP 2 //

Locate and remove the (4) 21mm bolts securing the tow hook. Remove tow hook.



### STEP 3 //

From directly center under the vehicle, locate and remove the (2) 16mm bolts supporting the center of the bumper.



### STEP 4 //

Locate and remove the (3) 8mm screws securing the splash shield to the bumper. Remove splash shield.



### STEP 5 //

Once the splash shields are removed, locate and remove the (2) 16mm bolts securing the splash shield brackets to the bumper. Bumper will now be loose.



### STEP 8 //

Install the tire carrier shaft through the bumper slot and tighten using the (4) M12x1.75x80mm bolts. Torque to 64 ft-lbs.



### STEP 6 //

On the driverside, locate and unplug the wiring connector. Tilt up and remove the bumper from the vehicle.



### STEP 9 //

Install the bumper to the vehicle using the (4) 9/16 bolts, flat washers, and lock washers on each side. Torque to 40 ft-lbs.



### STEP 7 //

Insert the supplied dual nut plate into the passenger side frame rail.



### STEP 10 //

Install the hitch assembly and hitch plate using the (4) M12x120mm bolts, and (2) M12x40mm bolts, flat washers, and lock washers. Torque to 40 ft-lbs. **J130703-JL**



**STEP 11 //**

Using a trim panel removal tool, carefully pry the plastic tailgate cover off. Remove cover.



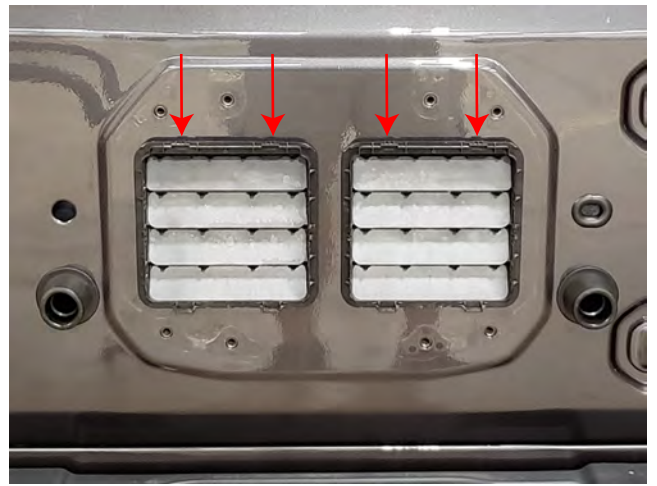
**STEP 12 //**

Locate, and unplug the (3) wire connections.



**STEP 13 //**

Carefully remove the wiring and grommet from the vehicle. Locate, and remove the (8) 13mm bolts holding the tire carrier secure. Remove tire carrier. \*\* Note factory hardware will be reused.



**STEP 14 //**

Using a trim panel removal tool, carefully pry on the tabs and remove the (2) tailgate vents.



**STEP 15 //**

Using the factory hardware from Step 13, install the new spare tire cover.



**STEP 16 //**

Install the bumper plate using the (3) M6x1.0x10mm bolts, flat washers, and lock washers.



**STEP 17 //**

Install the larger bearing and race into the bottom of the tire carrier, and the smaller bearing and race on the top of the tire carrier. Make sure to pack the bearing with grease before installation. Then use the small washer for the top and the larger washer for the bottom. Install the seal on the bottom of the tire carrier. Also use a small amount of grease for the seal.



**STEP 18 //**

Install the (1) Tire Carrier Base to the tire carrier by using the (2) M12x1.75x80mm bolts, (4) flat washers, and (2) lock nuts. \*\*Note: Height will be determined by size of spare tire.



**STEP 19 //**

Install the (1) Tire Carrier Mounting Hub to the tire carrier base by using (2) M12x1.75x80mm bolts, (4) flat washers, and (2) lock nuts. Then install the (1) M12x1.75x30mm bolt to lock the hub in place.



**STEP 20 //**

Install the license plate bracket to the tire carrier using the (2) M6x1.0x20mm bolts, flat washers, and lock washers.



**STEP 21 //**

Install the lower part of the third brake light bracket to the tire carrier using the (2) M6x1.0x20 mm bolts, flat washers, and lock washers. Install the upper bracket to the lower bracket using the (2) M6x1.0x25mm bolts, flat washers, and lock nuts.



**STEP 22 //**

Remove the screws holding the 3rd brake light to the factory tire carrier. Transfer the 3rd brake light to the new bracket. Carefully tighten the factory torx screws. The screw bosses are plastic and can strip out easily. **J130703-JL**



**STEP 23 //**

Install the rubber stopper to the mounting bracket using the (2) M6x1.0x20mm bolts, flat washers, and lock nuts.



**STEP 24 //**

Install the stopper bracket to the tire carrier using the (2) M6x1.0x20mm bolts, flat washers, and lock nuts.



**STEP 25 //**

Remove the factory rear backup camera from the factory tire carrier using a T9 torx bit. Install the camera to the new bracket using the (3) M2 screws, washers, and nuts.



**STEP 26 //**

Install the heim end link to the tire carrier and the spare tire cover using the (2) M12x1.75x70mm bolts, flat washers, and lock nuts.



**STEP 27 //**

Install the supplied rear camera extension harness to the rear camera. Then carefully route the factory harness as desired and plug into the factory connections.



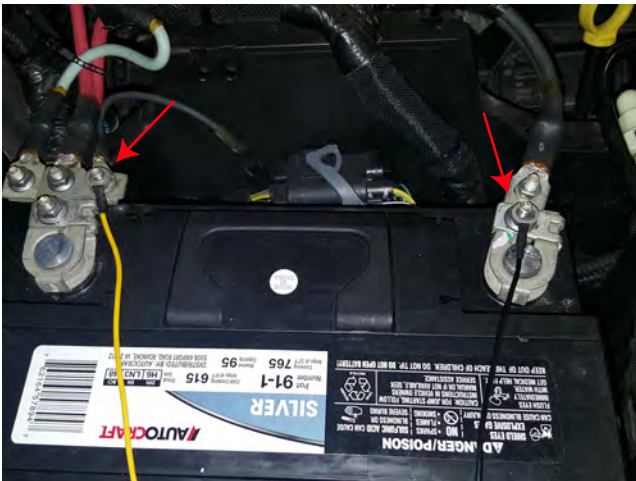
**STEP 28 // Optional Floodlight Installation:**

Install the (2) LED Flood Lights using the hardware provided in the light packaging to the outer slots of the bumper. If choosing not to use the LED lighting, the bumper will include a bolt on mesh cover. Secure the cover to the bumper using the provided stainless (4) M6x1.0x20mm bolts, washers, and nuts.



**STEP 29 // Optional Floodlight Wiring:**

Connect the (2) LED Flood Lights (outer lights) into the supplied harness. Zip tie any excess wire away from moving and/or hot engine components.



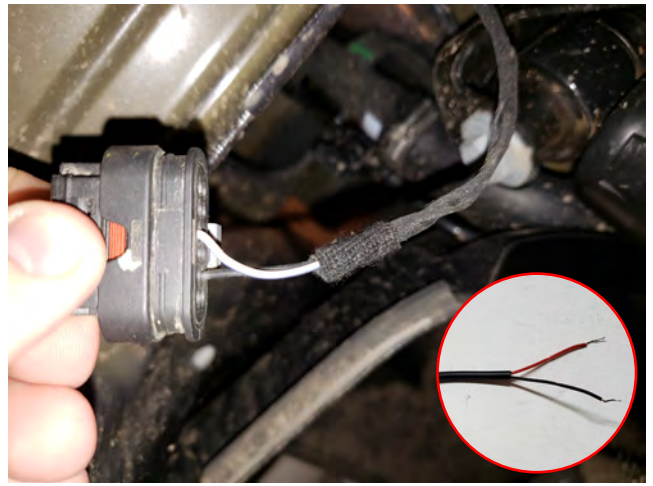
**STEP 30 // Optional Floodlight Wiring:**

Install the yellow 12+ volt wire to the positive battery terminal. Connect the black ground wire to the negative battery terminal. Secure any extra wire out of the way.



**STEP 31 // Optional Floodlight Wiring:**

Route the on/off switch to the interior of the vehicle. Mount the switch in the desired location. Zip tie any extra loose wiring out of the way.



**STEP 32 //**

Insert the (2) license plate light leds through the license plate bracket and attach with the supplied nuts and washers. Next, splice the Red 12v+ wire from the license plate led harness into the White power wire of the factory bumper harness, and the Black 12v- wire from the license plate led harness to the Black wire on the factory bumper harness connector. Test to ensure proper function. Installation is now complete.