

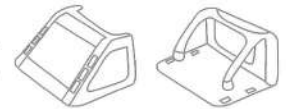
INSTALLATION INSTRUCTIONS

ULTIMATE TOP 4 DOOR TOP AND HARDWARE

Fit on:
Jeep® Wrangler JK 2007 - 2017
Part n. JKTT . . 4



❗ **TO COMPLETE THE TOP YOU NEED FASTBACK WINDOWS OR CARGO TOP**

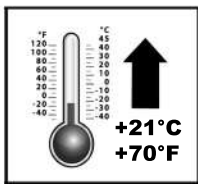


❗ **IMPORTANT** CHECK ALL INSTRUCTIONS BEFORE INSTALLING THE PRODUCT

This product is designed to protect from ordinary weather conditions. It's not in any case a protection from falling objects, or in event of an accident. This product is not a retaining system for vehicle occupants and for loaded material.

WEAR SEAT BELTS AT ALL TIMES

Failure in product installation could place occupants of the vehicle and other people in possibly dangerous situations.



CHECK AND FOLLOW FITTING INSTRUCTIONS PROPERLY

This product should be installed not below 70°F (21°C). Below this temperature fabric can contract for 1" (2/3 cm) or more and installation become harder with a risk of breaks. Few days after fitting fabric will relax losing the packaging wrinkles.

❗ **CAUTION** Safety glasses should be worn at all times installing this products.

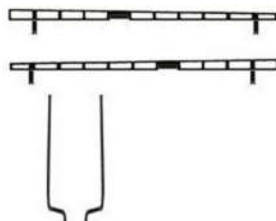
COMPONENT LIST

HARDWARE

n.1 Windshield bar



n.1 Hardware 4 doors



n.4 Screw M8 +
n.4 nut M8 +
n.6 washers



n.2 Screw M5 +
n.4 washers +
n.2 nut M5



SOFT TOP

n.1 Top



n.2 Bikini Pulling
Buckle



n.1 Heavy rain strap




1

2

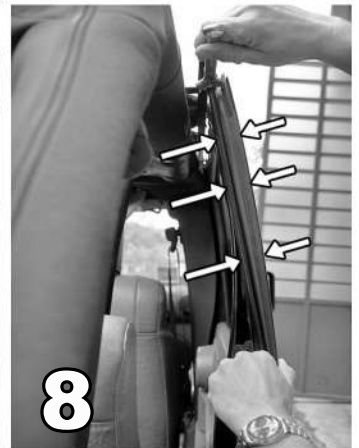
3

4

- 1)** Assemble door surround as in the picture using M5 screws, bolts and washers. Do not tighten.
- 2)** Place in position door frames.
- 3)** Secure center screw but not tighten yet.
- 4)** Secure rear screw but not tighten yet.


5

6


7

8

- 5)** Fit the windshield bar in the velcro pocket at front side of the top.
- 6)** Put the top in its position
- 7)** Insert the M8 screw without washer from the upper side of the windshield bar and make sure door surrounds fits with the doors.
- 8)** Tighten M5 screw with the door surround in the perfect position
Tighten all screws

Fitting tips

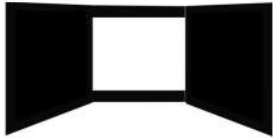
- Extra Bikini buckles are supplied to fix the top when is used as a bikini
- Front seam over the windshield must remain visible and not mashed between bar and rubber
- Correct pulling of rear straps gives a better tension without any risk of breaks
- To avoid noisy vibration at high speed, increase inside air pressure using ventilation system

INSTRUCTIONS CONTINUE

TOP  FASTBACK WINDOWS
CARGO TOP

COMPONENT LIST

n.1 Windows complete
2 Doors



n. 1 Rear window



n.1 Velcro
stripe



- 1)** Put the sticks in the windows pocket.
- 2)** Half zip rear window with side windows.
- 3)** Position windows on the car.
- 4)** Fix vertical part of windows with the Velcro on door surrounds. Respect the original bending of fabric.



- 5)** Slip plastic strip in the body rail
- 6)** Clean rear tailgate and stick velcro stripe as in the picture
- 7)** Pull the rear straps to give the correct tension to the top. Do not pull straps from the buckle, but from the part near the top.
- 8)** Fix the top with Velcro on door surrounds

COMPONENT LIST

n.1 Cargo Top 4 door n.1 Roll Cage cover R n.1 Roll Cage cover L n.1 Metal Bar



n.1 Velcro stripe



n.1 Heavy rain strap



1



2



3

- 1)** Fit Roll cage covers Right and Left.
- 2)** Fix buckles of inside bands as in the picture.
- 3)** Close the fabric around the centre of the roll cage, perfect fitting can be reached once everything is in place.



4



5



6

- 4)** Slide the metal bar under the body sides.
- 5)** Close the two Velcro bands as in the picture.
- 6)** Slip plastic strip in the body rail.



- 7)** Fix vertical part with the Velcro on door surrounds. Give the right tension.
8) Clean rear tailgate and stick velcro stripe as in the picture.

**Fitting tips**

- Velcro bands inside will give you the perfect tension, check it periodically
- Heavy rain strap helps to keep the fabric flat in shape also in case of heavy rain