



Rear Bumper & Tire Carrier & Optional Flood Lights

Jeep Wrangler JL (18+)

Tools Required:

Basic Hand Tools
35mm Socket
Tape Measure
Grease Gun
Straight Edge



1 Locate the T40 torx lock screw on the camera cover, and turn it counter clockwise to unlock. Remove the camera cover by pulling away from the vehicle. Then remove the spare tire.



2 Locate and remove the (4) 21mm bolts securing the tow hook. Remove tow hook.



3 From directly center under the vehicle, locate and remove the (2) 16mm bolts supporting the center of the bumper.



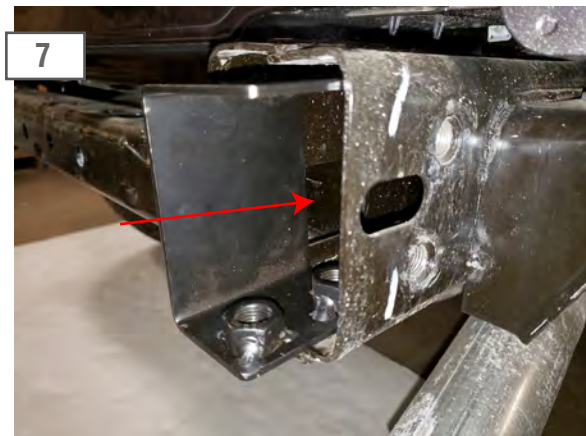
4 Locate and remove the (3) 8mm screws securing the splash shield to the bumper. Remove splash shield.



5 Once the splash shields are removed, locate and remove the (2) 16mm bolts securing the splash shield brackets to the bumper. Bumper will now be loose.



On the driverside, locate and unplug the wiring connector. Tilt up and remove the bumper from the vehicle.



Insert the supplied dual nut plate into the passenger side frame rail.



Install the tire carrier shaft through the bumper slot and tighten using the (4) M12x1.75x80mm bolts. Torque to 64 ft-lbs.



Install the bumper to the vehicle using the (4) 9/16 bolts, flat washers, and lock washers on each side. Torque to 40 ft-lbs.



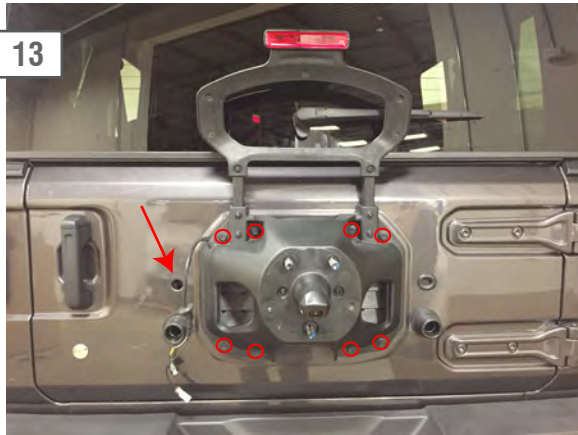
Install the hitch assembly and hitch plate using the (4) M12x120mm bolts, and (2) M12x40mm bolts, flat washers, and lock washers. Torque to 40 ft-lbs.



Using a trim panel removal tool, carefully pry the plastic tailgate cover off. Remove cover.



12 Locate, and unplug the (3) wire connections.



13 Carefully remove the wiring and grommet from the vehicle. Locate, and remove the (8) 13mm bolts holding the tire carrier secure. Remove tire carrier.



14 Install the cover plate over the tire carrier shaft by removing the 3m tape backing.



15 Install the larger bearing and race into the bottom of the tire carrier, and the smaller bearing and race on the top of the tire carrier. Make sure to pack the bearing with grease before installation. Then use the small washer for the top and the larger washer for the bottom. Install the seal on the bottom of the tire carrier. Also use a small amount of grease for the seal.



16 Install the latch to the carrier arm by using (2) M10 x 65mm bolts, (4) flat washers, and (2) M10 lock nuts.



17 Install the latch bracket to the rear bumper by using the (3) M10 x 40mm bolts, (6) flat washers, and (3) lock nuts.

18



Install the (1) Tire Carrier Base to the tire carrier by using the (2) M12x1.75x80mm bolts, (4) flat washers, and (2) lock nuts. **Note: Height will be determined by size of spare tire.

19



Install the (1) Tire Carrier Mounting Hub to the tire carrier base by using (2) M12x1.75x80mm bolts, (4) flat washers, and (2) lock nuts. Then install the (1) M12x1.75x30mm bolt to lock the hub in place.

20



Install the lower part of the third brake light bracket to the tire carrier using the (2) M10 x 1.50 x 30mm bolts, flat washers, and lock washers.

21



Install the upper bracket to the lower bracket using the (2) M6x1.0x25mm bolts, flat washers, and lock nuts.

22



Remove the screws holding the 3rd brake light to the factory tire carrier. Transfer the 3rd brake light to the new bracket. Carefully tighten the factory torx screws. The screw bosses are plastic and can strip out easily.

23



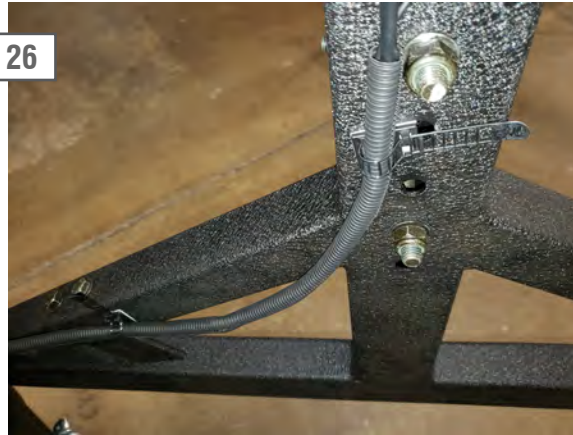
Install the carrier bump stops using the (4) M10 x 1.50 x 30mm bolts. With the carrier latched to the bumper, tighten the brackets so that the brackets are making contact with the rubber bumpers on the tailgate.

24



Install the license plate bracket to the tire carrier using the (2) M6x1.0x20mm bolts, flat washers, and lock washers.

26



Install the supplied rear camera extension harness to the rear camera. Then carefully route the factory harness as desired and plug into the factory connections.

28



Optional Flood Light Wiring:

Connect the (2) LED Flood Lights (outer lights) into the supplied harness. Zip tie any excess wire away from moving and/or hot engine components.

25



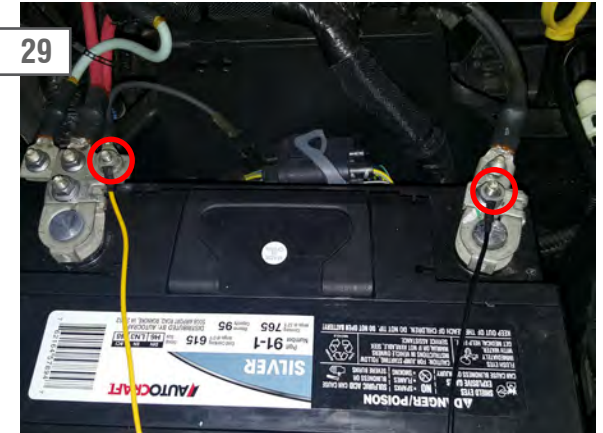
Remove the factory rear backup camera from the factory tire carrier using a T9 torx bit. Install the camera to the new bracket using the (3) M2 screws, washers, and nuts.

27



Insert the (2) license plate light leds through the license plate bracket and attach with the supplied nuts and washers. Next, splice the Red 12v+ wire from the license plate led harness into the White power wire of the factory bumper harness, and the Black 12v- wire from the license plate led harness to the Black wire on the factory bumper harness connector. Test to ensure proper function. Installation is now complete.

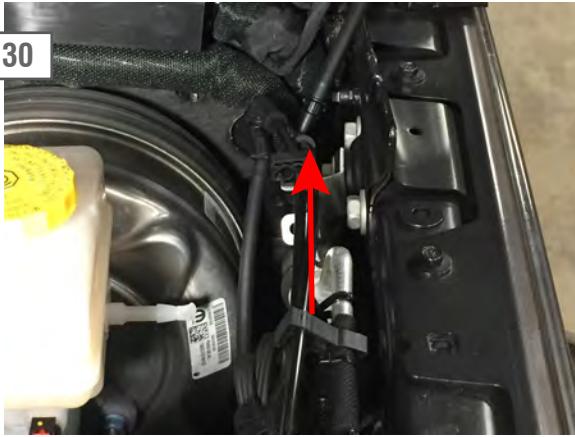
29



Optional Floodlight Wiring:

Install the yellow 12+ volt wire to the positive battery terminal. Connect the black ground wire to the negative battery terminal. Secure any extra wire out of the way.

30



Optional Floodlight Wiring:

Route the on/off switch to the interior of the vehicle.
Mount the switch in the desired location. Zip tie any extra loose wiring out of the way.

Contents:

- (1) Rear Bumper
- (1) Tire Carrier
- (1) Tire Carrier Stud Mount
- (1) Tire Carrier Handle
- (2) Spare Tire Mounts
- (2) Third Brake Light Mounts
- (2) Rear Bumper Mounts
- (1) Handle Latch
- (1) Hitch Receiver Mount
- (1) Tire Carrier Stopper Mounts
- (1) NSK Bearing L44649/10 - 402
- (1) NSK Bearing L68149/10 - 506
- (1) Seal
- (1) Castle Nut
- (1) Cotter Pin
- (1) Dust Cap
- (1) Dust Cap Retaining Phillips Screw
- (3) Lug Nuts
- (2) Bearing Washers
- (1) Rear Camera Extension Harness
- (1) Third Brake Light Extension Harness
- (2) LED License Plate Lights

Optional:

- ** (2) KC LED Flood Lights
- ** (1) Light Harness

Rear Bumper Hardware: Tire Carrier Hardware:

- | | |
|--|--|
| <ul style="list-style-type: none">(4) M12 x 1.75 x 120mm Bolts(2) M12 x 1.75 x 40mm Bolts(12) M12 Flat Washers(6) M12 Lock Washers(6) M12 Nuts(8) 9/16 - 18 x 1 1/2 Bolts(16) 9/16 Flat Washers(16) 9/16 Lock Washers | <ul style="list-style-type: none">(4) M12 x 1.75 x 80mm Bolts(4) M12 x 1.75 x 60mm Bolts(1) M12 x 1.75 x 30mm Bolt(12) M12 Flat Washers(4) M12 Lock Washers(4) M12 Lock Nuts(2) M10 x 1.50 x 65mm Bolts(3) M10 x 1.50 x 40mm Bolts(6) M10 x 1.50 x 30mm Bolts(16) M10 Flat Washers(5) M10 Lock Washers(5) M10 Lock Nuts(4) M6 Screws(4) M6 Flat Washers(2) M6 Lock Nuts(3) Lug Nuts(1) Allen Key |
|--|--|