

# Extreme HD Rear Bumper & Tire Carrier (18+ JL)

## Contents:

- (1) Rear Bumper & Tire Carrier
- (1) Hitch Assembly
- (1) Hitch Plate
- (2) Block Off Plates
- (1) Tire Carrier Shaft Bumper Plate
- (1) Tire Carrier Latch Bumper Plate
- (1) Tire Carrier Latch

- (1) Tire Carrier Latch Mount
- (4) Latch Mount Shims
- (1) Tire Carrier Base
- (1) Tire Carrier Base Mount
- (1) Tire Carrier Shaft
- (1) License Plate Mount
- (2) Third Brake Light Brackets
- (2) Rear Camera Mounts
- (8) M14 Lock Washers
- (8) M14 Flat Washers
- (8) M14x1.50x40mm Bolts

- (1) 35mm Castle Nut
- (2) LED License Plate Lights
- (2) Wire Harness Extensions
- (8) M12x1.75x80mm Bolts
- (4) M12x1.75x25mm Bolts
- (1) M12x1.75x30mm Bolt
- (2) M12x1.75x40mm Bolt
- (4) M12x1.75x120mm Bolt
- (32) M12 Flat Washers
- (10) M12 Lock Washers
- (6) M12 Nuts

- (8) M12 Lock Nuts
- (2) M10x1.50x65mm Bolts
- (3) M10x1.50x40mm Bolts
- (2) M10x1.50x30mm Bolts
- (18) M10 Flat Washers
- (8) M10 Lock Washers
- (5) M10 Lock Nuts
- (6) M10x1.50x25mm Bolts
- (1) M8x8mm Screw
- (1) M4x8mm Screw
- (1) M4x36mm Pin

- (2) M6x1.0x20mm Bolts
- (2) M6x1.0x15mm Bolts
- (5) M6 Flat Washers
- (2) M6 Lock Nuts
- (1) M6 Nuts
- (1) M24Nuts
- (1) Large Bearing & Race
- (1) Small Bearing & Race
- (1) Carrier Shaft Cap Cover, Cotter Pin

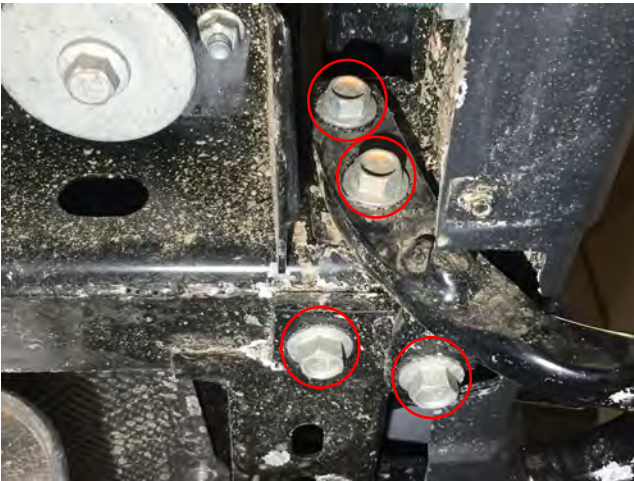
## TOOLS REQUIRED:

- 16mm, 18mm, 19mm, 21mm sockets
- Ratchet
- T40 Torx Bit
- T9 Torx Bit
- Trim Panel Removal Tool
- Clean Towel
- Cleaning Solution



### STEP 1 //

Locate the T40 torx lock screw on the camera cover, and turn it counter clockwise to unlock. Remove the camera cover by pulling away from the vehicle. Then remove the spare tire.



### STEP 2 //

Locate and remove the (4) 21mm bolts securing the tow hook. Remove tow hook.



### STEP 3 //

From directly center under the vehicle, locate and remove the (2) 16mm bolts supporting the center of the bumper.



### STEP 4 //

Locate and remove the (3) 8mm screws securing the splash shield to the bumper. Remove splash shield.



### STEP 5 //

Once the splash shields are removed, locate and remove the (2) 16mm bolts securing the splash shield brackets to the bumper. Bumper will now be loose.



### STEP 8 //

Install the tire carrier shaft through the bumper slot and tighten using the (4) M12x1.75x80mm bolts. Torque to 64 ft-lbs.



### STEP 6 //

On the driverside, locate and unplug the wiring connector. Tilt up and remove the bumper from the vehicle.



### STEP 9 //

Install the bumper to the vehicle using the (4) 9/16 bolts, flat washers, and lock washers on each side. Torque to 40 ft-lbs.



### STEP 7 //

Insert the supplied dual nut plate into the passenger side frame rail.



### STEP 10 //

Install the hitch assembly and hitch plate using the (4) M12x120mm bolts, and (2) M12x40mm bolts, flat washers, and lock washers. Torque to 40 ft-lbs. **J130318-JL**



**STEP 11 //**

Using a trim panel removal tool, carefully pry the plastic tailgate cover off. Remove cover.



**STEP 12 //**

Locate, and unplug the (3) wire connections.



**STEP 13 //**

Carefully remove the wiring and grommet from the vehicle. Locate, and remove the (8) 13mm bolts holding the tire carrier secure. Remove tire carrier.



**STEP 14 //**

Install the bumper plate using the (3) M6x1.0x10mm bolts, flat washers, and lock washers.



**STEP 15 //**

Install the larger bearing and race into the bottom of the tire carrier, and the smaller bearing and race on the top of the tire carrier. Make sure to pack the bearing with grease before installation. Then use the small washer for the top and the larger washer for the bottom. Install the seal on the bottom of the tire carrier. Also use a small amount of grease for the seal.



**STEP 16 //**

Install the latch to the carrier arm by using (2) M10 x 65mm bolts, (4) flat washers, and (2) M10 lock nuts.



### STEP 17 //

Install the latch bracket to the rear bumper by using the (3) M10 x 40mm bolts, (6) flat washers, and (3) lock nuts.



### STEP 18 //

Install the (1) Tire Carrier Base to the tire carrier by using the (2) M12x1.75x80mm bolts, (4) flat washers, and (2) lock nuts. \*\*Note: Height will be determined by size of spare tire.



### STEP 19 //

Install the (1) Tire Carrier Mounting Hub to the tire carrier base by using (2) M12x1.75x80mm bolts, (4) flat washers, and (2) lock nuts. Then install the (1) M12x1.75x30mm bolt to lock the hub in place.



### STEP 20 //

Install the lower part of the third brake light bracket to the tire carrier using the (2) M6x1.0x20 mm bolts, flat washers, and lock washers.



### STEP 21 //

Install the upper bracket to the lower bracket using the (2) M6x1.0x25mm bolts, flat washers, and lock nuts.



### STEP 22 //

Remove the screws holding the 3rd brake light to the factory tire carrier. Transfer the 3rd brake light to the new bracket. Carefully tighten the factory torx screws. The screw bosses are plastic and can strip out easily. **J130318-JL**



**STEP 23 //**

Install the carrier bump stops using the (4) M12 x 1.75 x 110mm bolts. With the carrier latched to the bumper, tighten the brackets so that the brackets are making contact with the rubber bumpers on the tailgate.



**STEP 24 //**

Install the license plate bracket to the tire carrier using the (2) M6x1.0x20mm bolts, flat washers, and lock washers.



**STEP 25 //**

Remove the factory rear backup camera from the factory tire carrier using a T9 torx bit. Install the camera to the new bracket using the (3) M2 screws, washers, and nuts.



**STEP 26 //**

Install the supplied rear camera extension harness to the rear camera. Then carefully route the factory harness as desired and plug into the factory connections.



**STEP 27 //**

Insert the (2) license plate light leds through the license plate bracket and attach with the supplied nuts and washers. Next, splice the Red 12v+ wire from the license plate led harness into the White power wire of the factory bumper harness, and the Black 12v- wire from the license plate led harness to the Black wire on the factory bumper harness connector. Test to ensure proper function. Installation is now complete.