

Extreme HD Rocker Steps (18+ JL 2-Door)

Contents:

- (1) Driver Side Rocker Step
- (1) Passenger Side Rocker Step
- (4) M10x1.5x30mm Bolts
- (8) M10 Flat Washers
- (4) M10 Lock Nuts
- (4) M8x1.25x35mm Bolts
- (4) M8 Lock Washers
- (4) M8 Flat Washers
- (8) M6x25mm Bolts
- (8) M6 Lock Nuts
- (16) M6 Flat Washers
- (4) Pinch Weld Brackets

TOOLS REQUIRED:

- 10mm, 13mm, 16mm, and 17mm Sockets
- Ratchet
- Clean Towel
- Cleaning Solution



STEP 1 //

If your vehicle is equipped with factory side steps begin by locating the (2) pinch weld mounting locations under the vehicle. **Note if your vehicle is not equipped with factory side steps, continue to Step 5.



STEP 2 //

From under the vehicle, remove all (4) 10mm nuts holding the factory side step to the pinch welds of the vehicle.



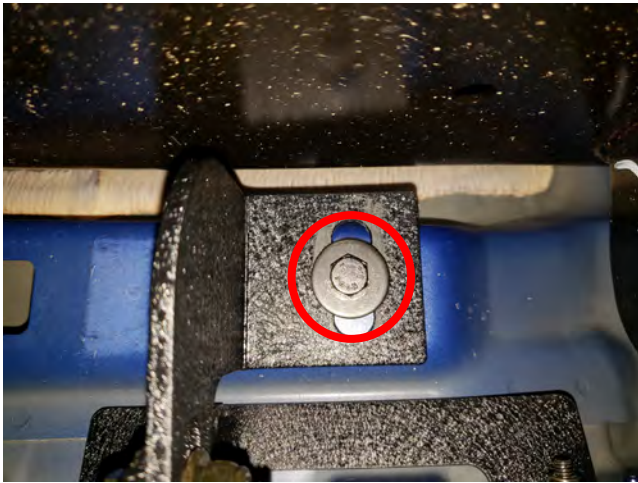
STEP 3 //

From under the vehicle, locate and remove each of the 13mm body mount bracket bolts. **Note factory side step will now be loose.



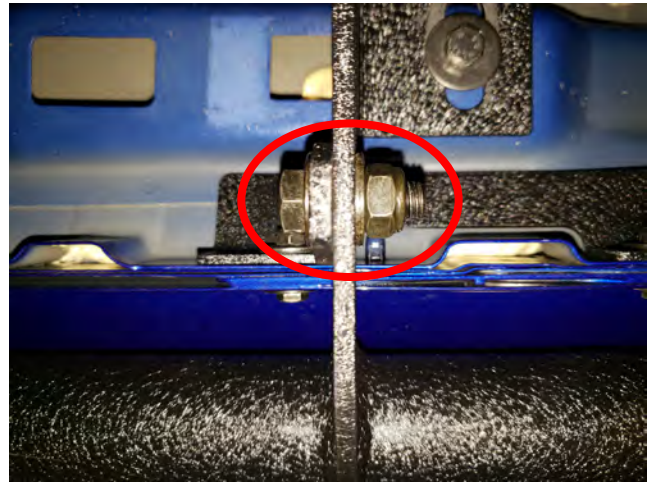
STEP 4 //

Carefully pull the side step away from the vehicle and downward to remove from the vehicle. Take this time to clean the pinch welds, and body mounts from any road debris.



STEP 5 //

Position the new Rocker Step and install them by using the (2) M8x35mm bolts, flat washers, and lock washers through the body mount brackets. **Note do not fully tighten leaving room for some adjustment.



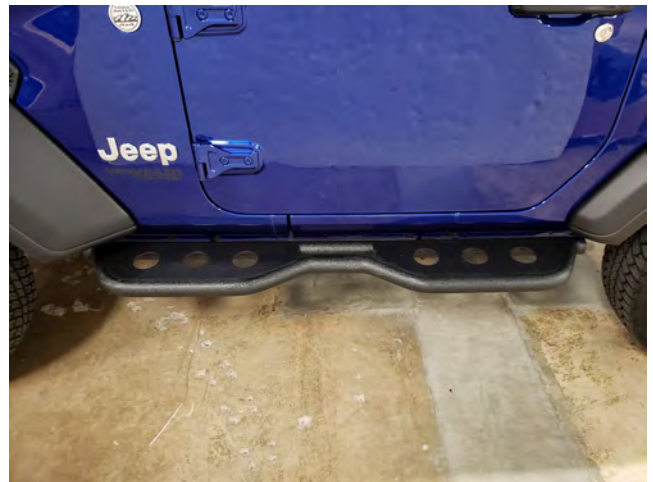
STEP 7 //

Connect the pinch weld brackets to the Rocker Step body mount brackets by using the (2) M10x35mm bolts, flat washers, and lock nuts. Next fully tighten the body mount brackets from Step 5. **Note If front to back adjustment is needed, loosen the hardware from Steps 5 & 7 to achieve the position desired then re-tighten fully.



STEP 6 //

Align the pinch weld mounting brackets with the pinch weld holes of the vehicle and tighten using the (4) M6x25mm bolts, flat washers, and lock nuts.



STEP 8 //

Double check installation to make sure everything is tight. Installation is now complete.