

Installation Instructions for Teraflex Monster Front Forged Adjustable Track Bar

(2010 Jeep Wrangler Unlimited)

Installation Time: 1 Hour

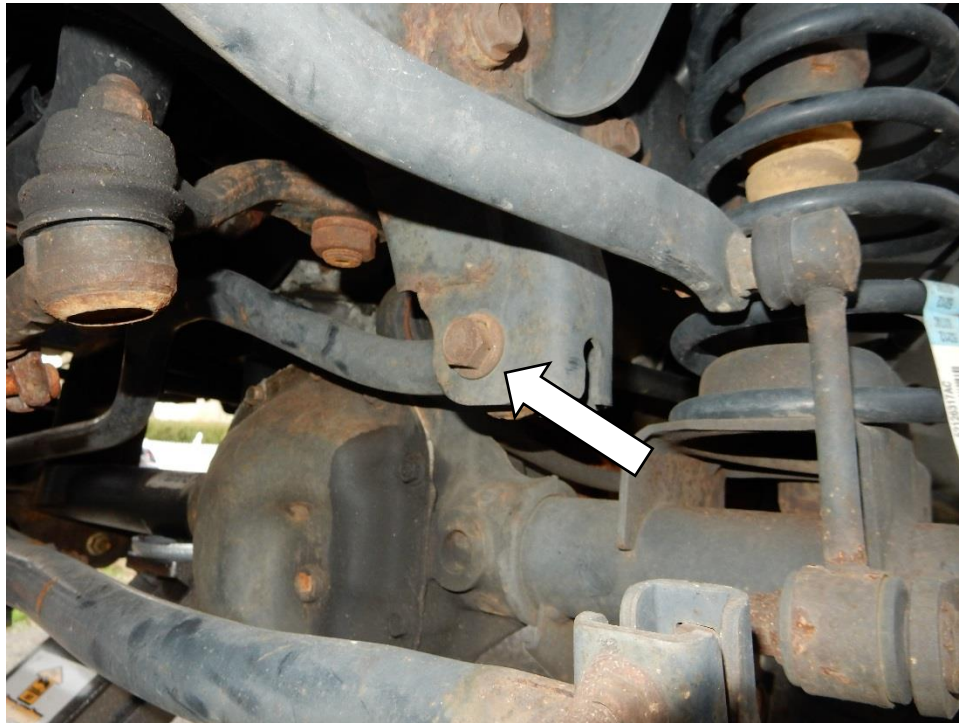
Tools Required:

- ✓ Ratchet
- ✓ Torque Wrench
- ✓ 15mm Socket
- ✓ 15mm Wrench
- ✓ 21mm Socket
- ✓ 21mm Wrench
- ✓ Tape Measure

The installation of the Teraflex Monster Adjustable Front Track Bar is best done with the jeep on the ground at ride height.

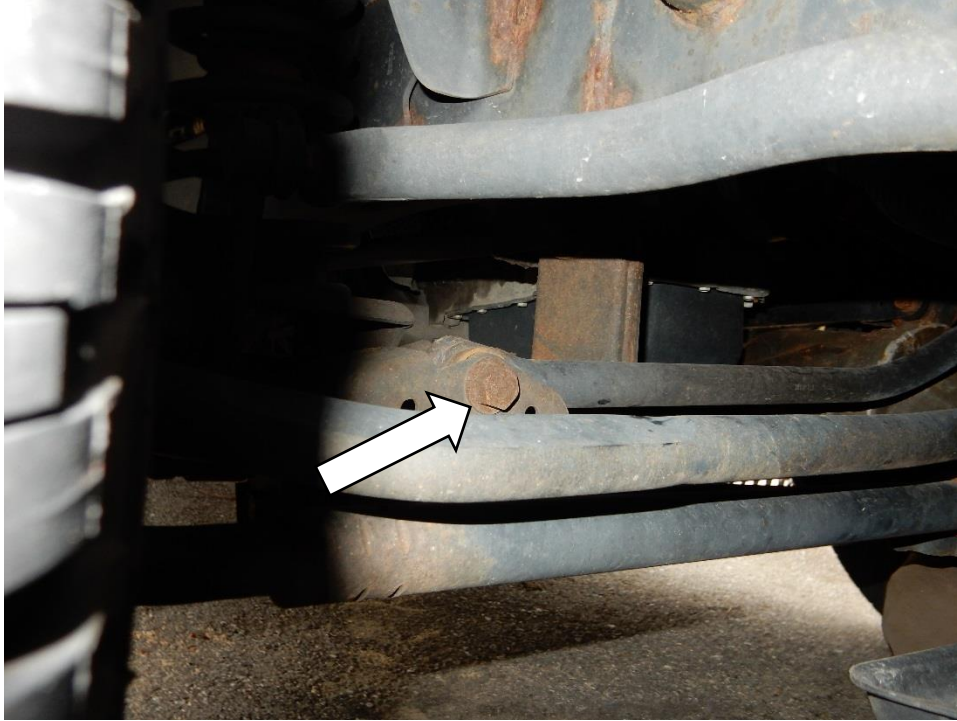
Installation Instructions:

1. Using a 21mm socket, remove the bolt connecting the front track bar to the frame bracket.



- Using a 21mm socket, remove the bolt connecting the front track bar to the axle bracket. Remove the front track bar.

Note: A flag nut is used on this bolt.



- Using a 21mm socket and wrench, install the track bar into the frame side bracket using the factory bolt and nut. Torque bolt to 125 ft-lbs.

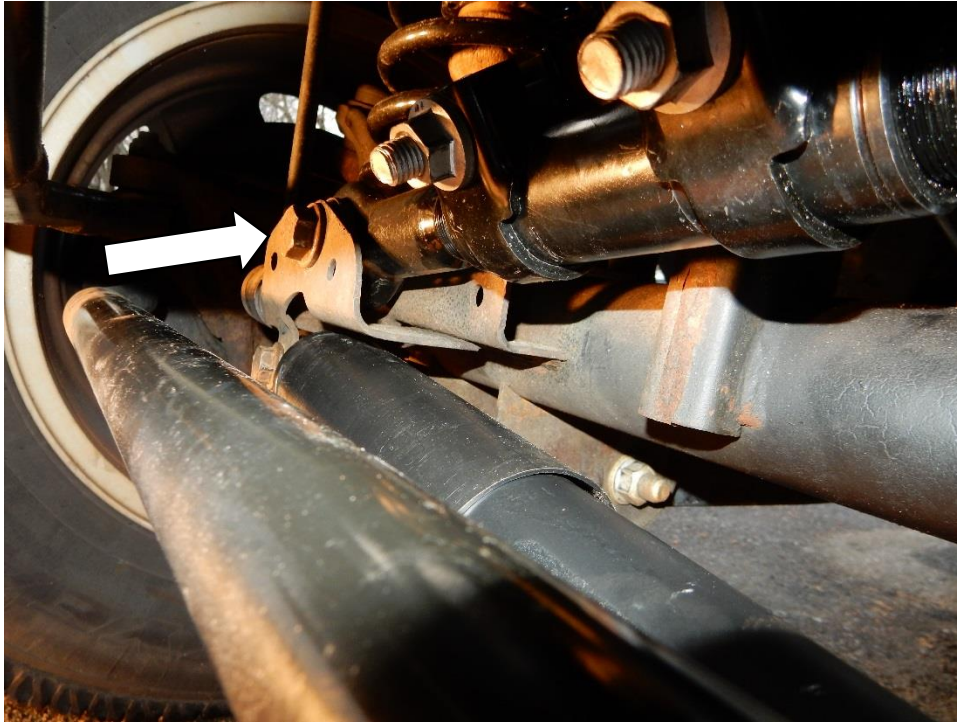
Note: Do not torque until both bolts have been installed.



- Using a 21mm socket, install the track bar into the axle side bracket using the factory bolt and nut. Torque to 125 ft-lbs.

Note: Torque both bolts.

Note: Rotating the steering wheel can help align the track bar with the axle bracket.



- Using a tape measure, measure the distance from the center of the shock tower to the outer edge of the tire tread on the driver and passenger sides. Note the difference between the two dimensions.



- Using a 15mm socket, loosen the clamps on the adjustment sleeve.



- Rotate the track bar adjustment sleeve clockwise until the dimensions noted from step 5 are the same on both the driver and passenger sides.



- Using a 15mm socket, tighten the bolts on the adjustment sleeve. Torque to 45 ft-lbs.



- Use the steering wheel to straighten the front wheels. Note the position of the steering wheel, it is likely off center.



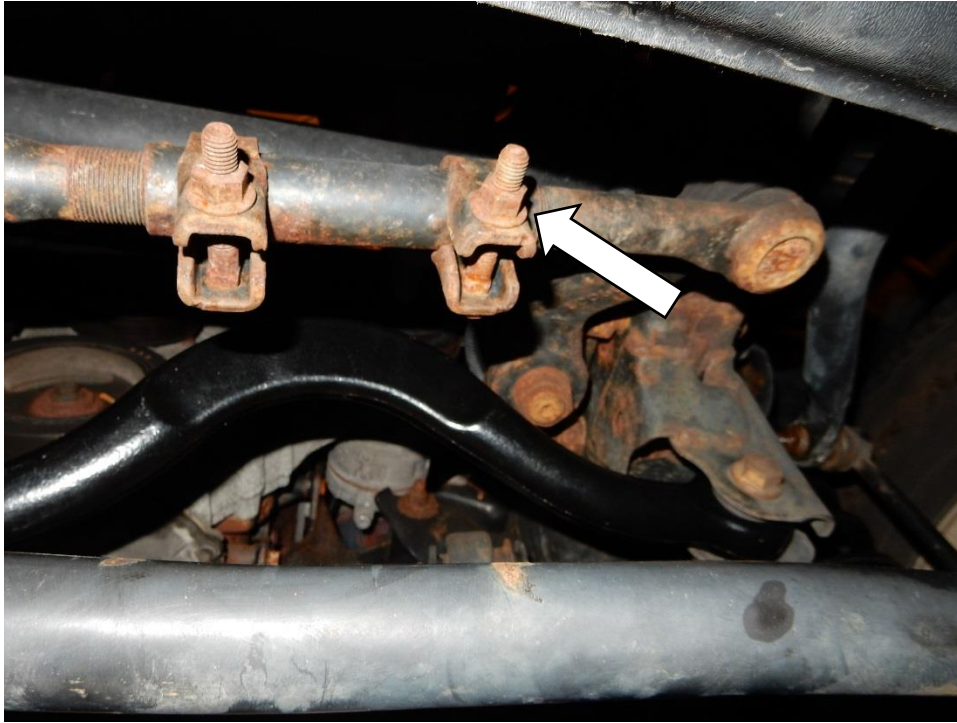
10. Mark the adjuster sleeve of the drag link to note the factory setting, to be used as a base point.



11. Using a 15mm socket, loosen the nuts on the adjuster sleeve of the drag link. Rotate the adjuster sleeve of the drag link clockwise approximately 3/4 of a turn or as needed until the steering wheel is straight.



12. Using a 15mm socket tighten the nuts on the adjuster sleeve of the drag link. Torque to 45 ft-lbs.



Installation Instructions Written by ExtremeTerrain Customer Ryan Field 1/12/2016