



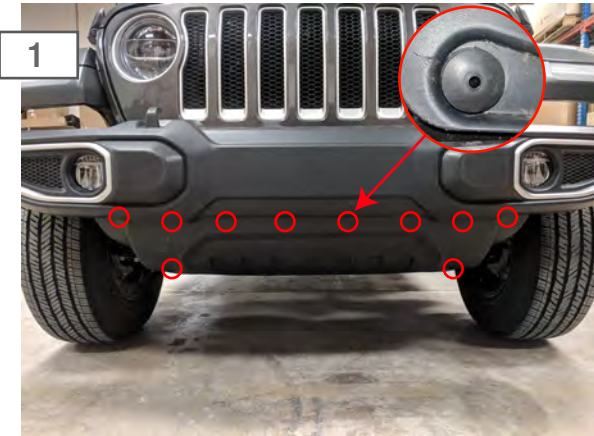
## HD Front Bumper w/20” LED Light Bar 2018+ JL

### Tools Required:

- Trim Panel Removal Tool
- Ratchet
- 7mm, 8mm, 13mm, 16mm, 18mm Sockets
- 10mm Wrench
- Torx Bits

### Contents:

- |                          |                        |                     |
|--------------------------|------------------------|---------------------|
| (1) Bumper               | (8) M12 Flat Washers   | (10) M6x1.0x15mm    |
| (2) Foglight Brackets    | (6) M8x1.25x30mm Bolts | (8) M6 Flat Washers |
| (2) D-Rings              | (12) M8 Flat Washers   | (6) M6 Lock Washers |
| (4) Dual M12 Stud Plates | (6) M8 Lock Washers    | (12) M6 Nuts        |
| (8) M12 Nuts             | (6) M8 Nuts            | (2) Allen Wrenches  |
| (8) M12 Lock Washers     | (6) M6x1.0x20mm Screws |                     |



From under the vehicle, remove the (8) plastic push pins securing the factory splash shield to the vehicle. Next remove the (2) 8mm screws, and remove the splash shield from the vehicle.



Remove the (2) upper plastic push pins securing the plastic cover to the frame rails.



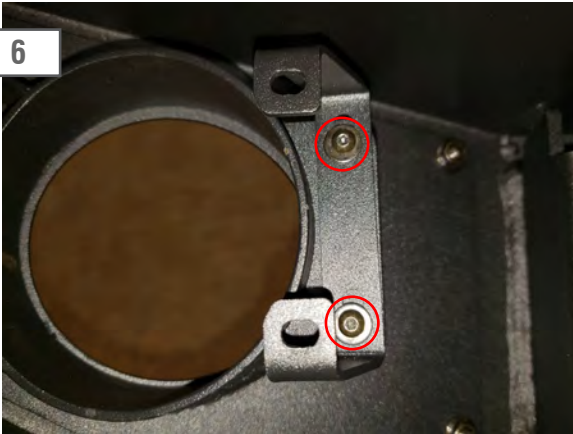
Carefully unplug the foglight wiring harness from the connector.



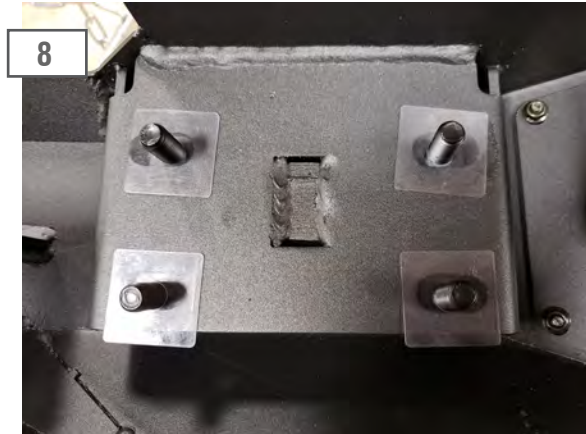
From under the vehicle, access and remove the (8) 18mm nuts, and (4) 18mm bolts securing the factory bumper to the vehicle. Then fully remove the bumper from the vehicle.



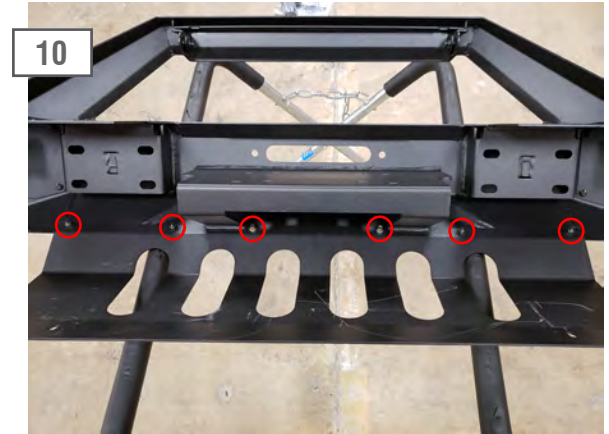
Remove the factory foglight harness from the factory bumper using a trim panel removal tool. \*\*Note, the factory bumper is two pieces. You will have to remove all (24) 7mm screws to gain access to the foglight harness.



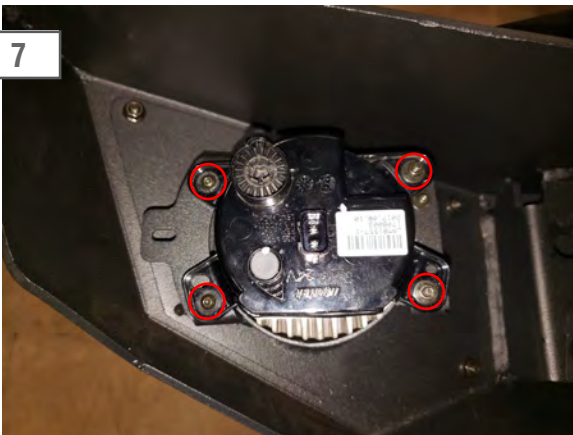
6  
Install the (2) LED fog light brackets to the fog light mounts of the bumper using the (4) M4 allen bolts, washers, and nuts.



8  
Insert the (2) dual bolt plates through the back side of the bumper mount and secure using the plastic holders.



10  
**Optional Skid Plate:**  
Attach the skid plate to the bumper using the (6) M6 allen bolts, lock washers, flat washers, and nuts.



7  
Install the factory fog lights to the fog light mounts using the (4) M4 allen bolts, washers, and nuts.



9  
**Optional Skid Plate:**  
Install the skid plate brackets to the lower frame rail of the vehicle using the (2) M8 bolts, flat washers, lock washers, and nuts.



11  
Attach the bumper to the frame using the (8) M12 nuts, lock washers, and flat washers. Torque to 40 ft-lbs.  
**Note:** Once the bumper is attached, attach the lower part of the skid plate to the lower bracket using the (2) M8 bolts, flat washers, lock washers, and nuts.