



Extreme HD Rear Bumper (18+ JL)

Contents:

- | | | |
|---------------------------|--------------------------|--------------------------|
| (1) Rear Bumper | (2) M12x1.75x40mm Bolts | (6) M10 Flat Washers |
| (1) Hitch Assembly | (12) M12 Flat Washers | (6) M10 Lock Washers |
| (1) Hitch Plate | (6) M12 Lock Washers | (2) License Plate Lights |
| (2) Block Off Plates | (6) M12 Nuts | |
| (1) License Plate Bracket | (4) 9/16-18x40mm Bolts | |
| (1) Dual Nut Plate | (8) 9/16 Flat Washers | |
| (4) M12x1.75x120 MM Bolts | (4) 9/16 Lock Washers | |
| | (6) M10x1.50x25mm Screws | |

TOOLS REQUIRED:

- 16mm, 18mm, 21mm sockets
- Ratchet
- T40 Torx Bit
- Trim Panel Removal Tool
- Clean Towel
- Cleaning Solution



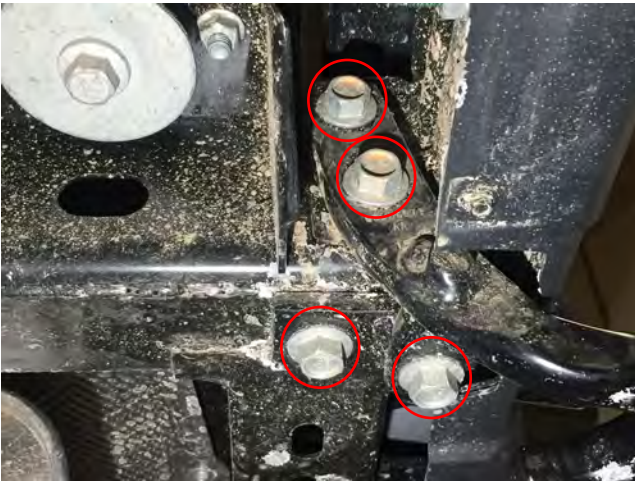
STEP 1 //

Locate the T40 torx lock screw on the camera cover, and turn it counter clockwise to unlock. Remove the camera cover by pulling away from the vehicle. Then remove the spare tire.



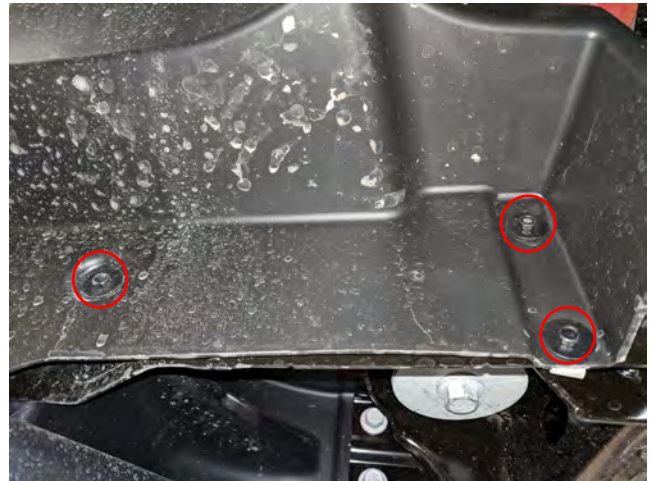
STEP 3 //

From directly center under the vehicle, locate and remove the (2) 16mm bolts supporting the center of the bumper.



STEP 2 //

Locate and remove the (4) 21mm bolts securing the tow hook. Remove tow hook.



STEP 4 //

Locate and remove the (3) 8mm screws securing the splash shield to the bumper. Remove splash shield.



STEP 5 //

Once the splash shields are removed, locate and remove the (2) 16mm bolts securing the splash shield brackets to the bumper. Bumper will now be loose.



STEP 6 //

On the driverside, locate and unplug the wiring connector. Tilt up and remove the bumper from the vehicle.



STEP 7 //

Insert the supplied dual nut plate into the passenger side frame rail.



STEP 8 //

Install the bumper to the vehicle using the (4) 9/16 bolts, flat washers, and lock washers. Torque to 40 ft-lbs.



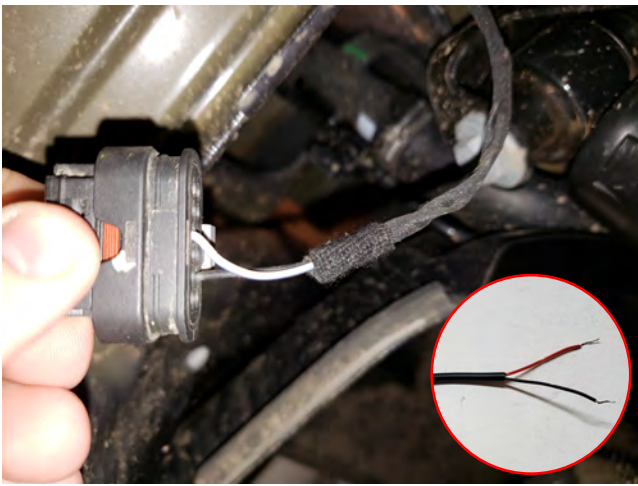
STEP 9 //

Install the hitch assembly and hitch plate using the (4) M12x120mm bolts, and (2) M12x40mm bolts, flat washers, and lock washers. Torque to 40 ft-lbs.



STEP 10 //

Install the bolt off plates, and license plate brackets using the (8) M10 screws.



STEP 10 //

Insert the (2) license plate light leds through the license plate bracket and attach with the supplied nuts and washers. Next, splice the Red 12v+ wire from the license plate led harness into the White power wire of the factory bumper harness, and the Black 12v- wire from the license plate led harness to the Black wire on the factory bumper harness connector. Test to ensure proper function. Installation is now complete.