

Rough County Front Brake Lines Install

Installation Time: 30 Minutes

Tools Required:

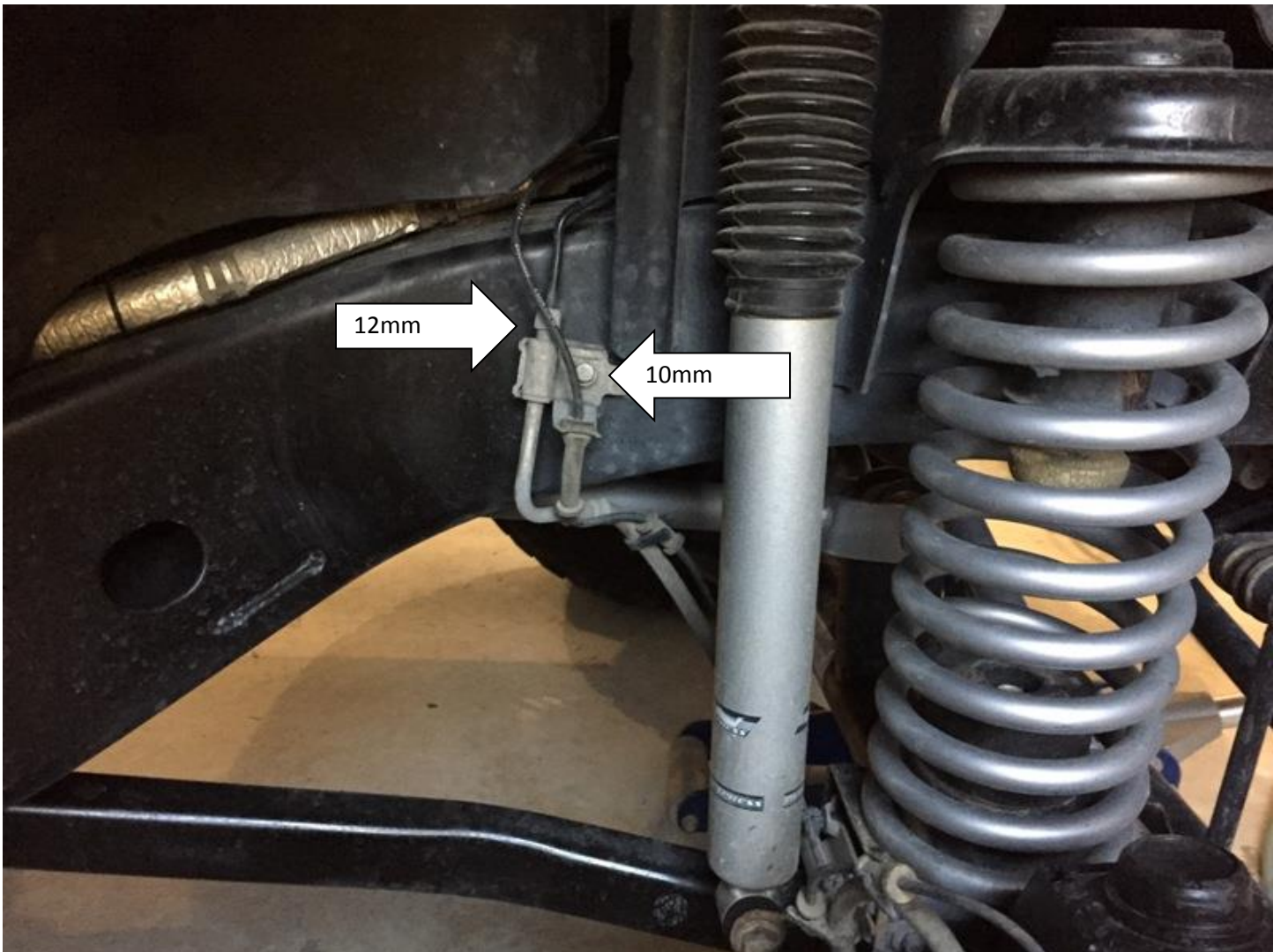
- ✓ 12mm Wrench
- ✓ 17mm Wrench
- ✓ 10mm Socket
- ✓ 15mm Socket

NOTE:

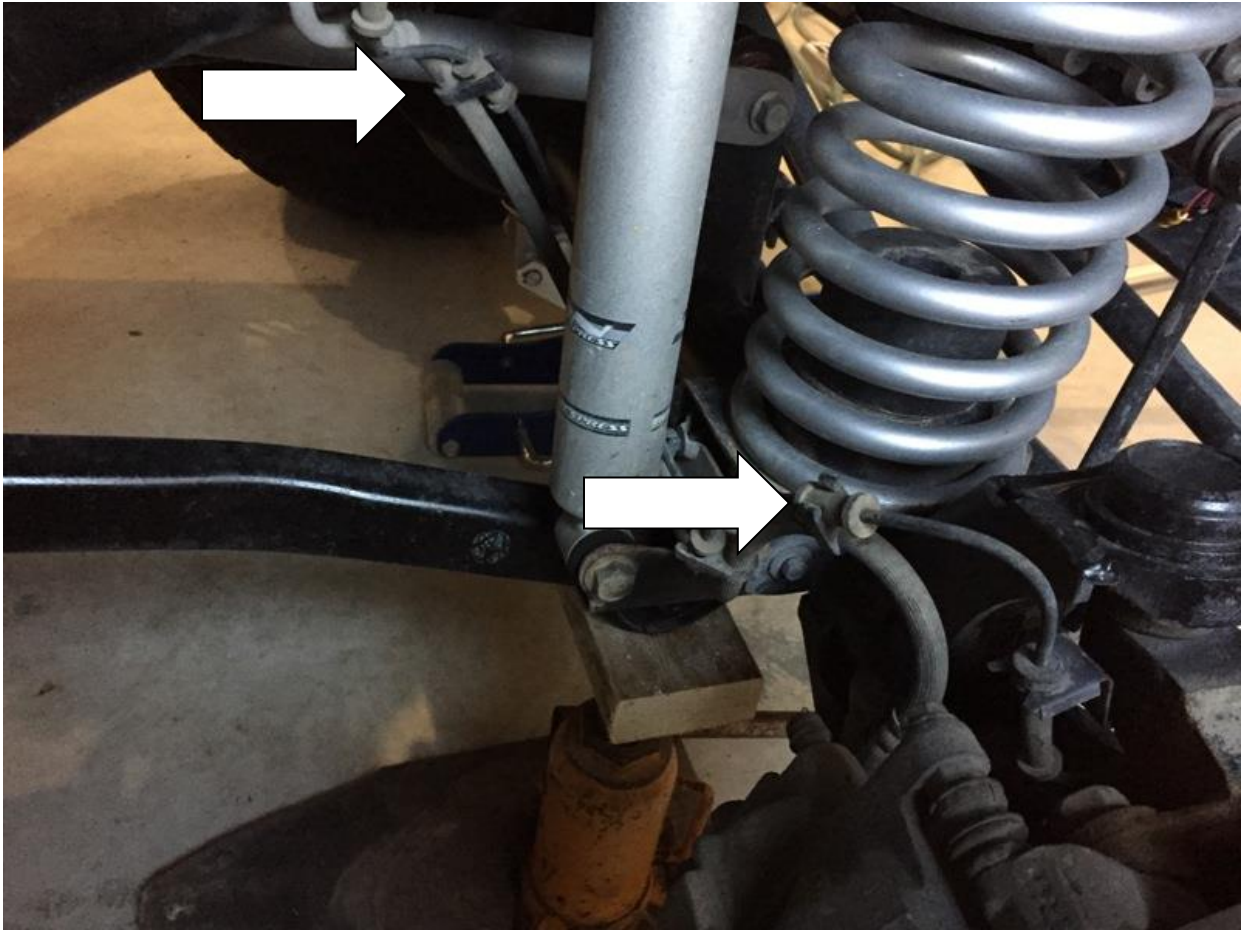
You will need to jack up the front of your vehicle and remove front wheels before you can start this install.

Installation Instructions:

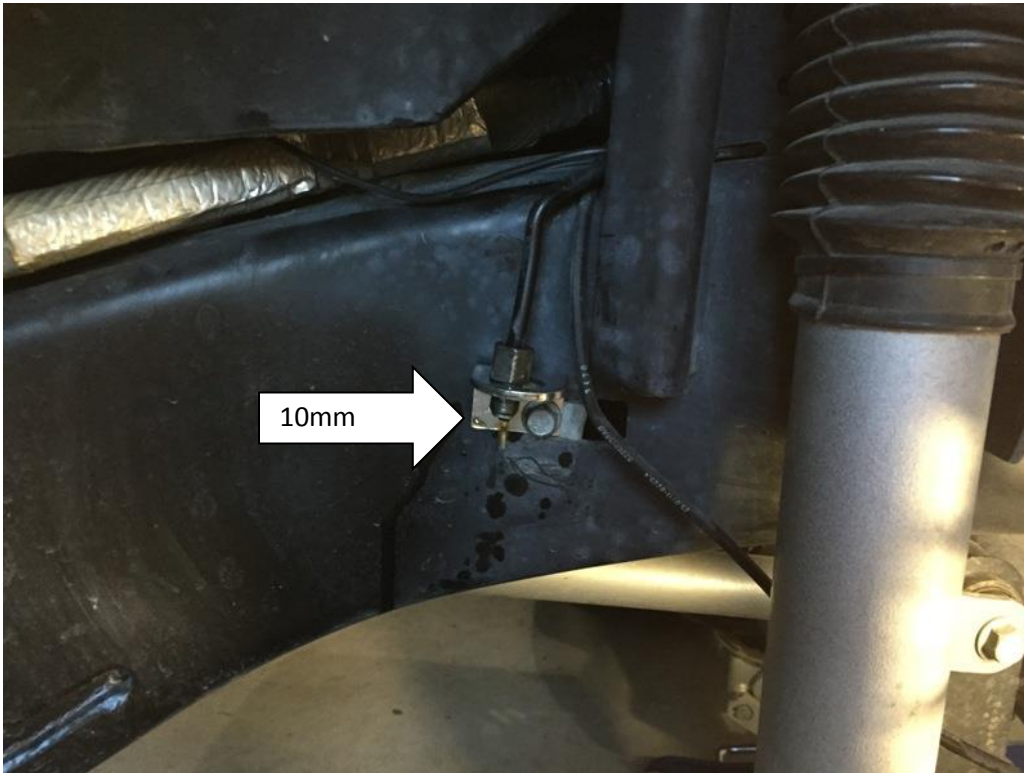
1. Start on the passenger side by loosening up the steel brake line (hard line) using the 12mm wrench.



2. Using a 10mm socket remove the bolt holding the brake line bracket to the frame.
3. Remove any clips/zip ties holding the factory brake line to the ABS line.



4. Secure the new brake line bracket to the frame using the factory bolt with the 10mm socket.



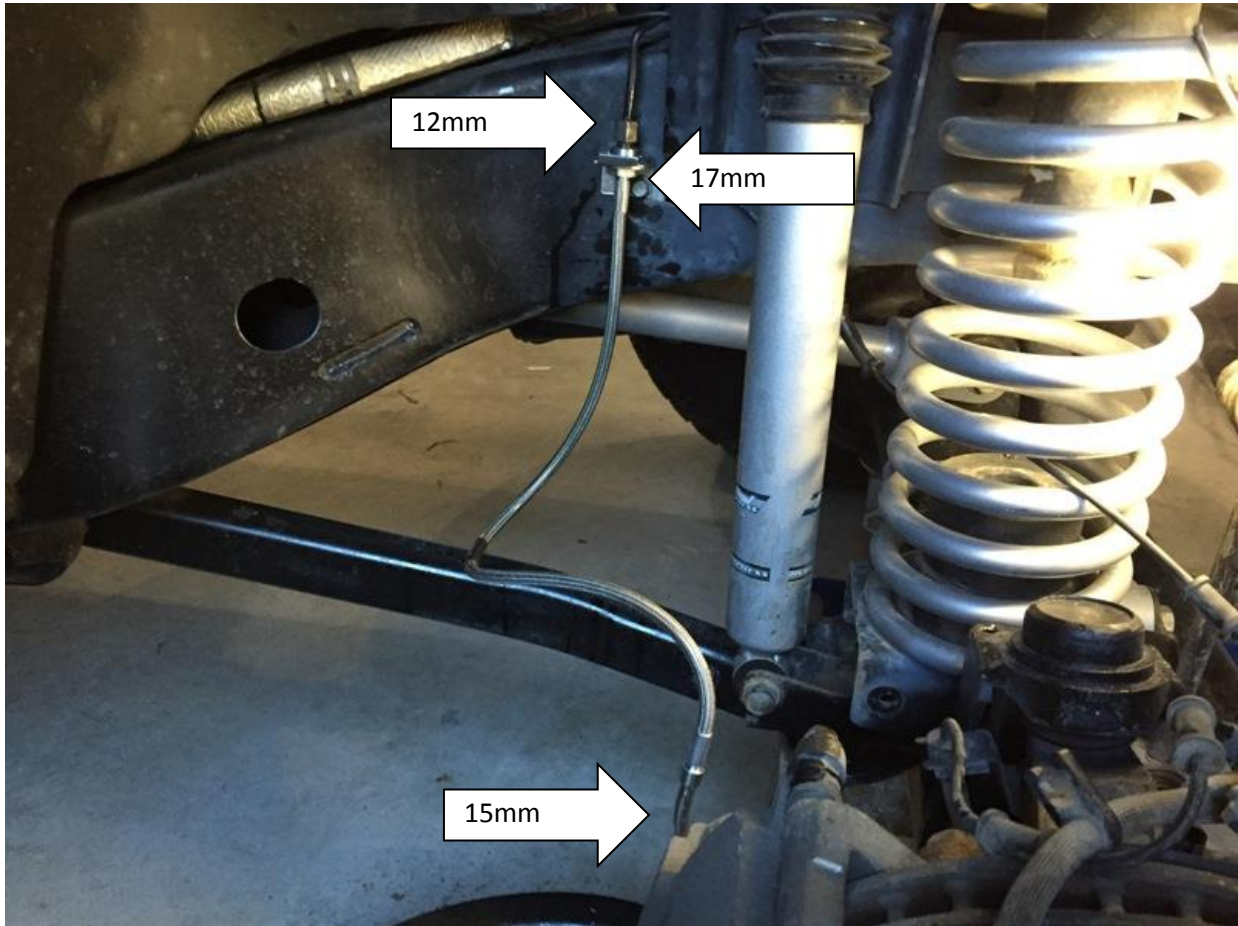
5. Place the new brake line through the hole of the bracket and secure it with the spring clip. Attach the steel brake line to the new flexible brake line. Leave nut slightly loose to allow adjustment of brake line.



6. Remove brake line from caliper using the 15mm socket. Reuse factory bolt to secure new brake line to caliper. You will need to place one crush washer, brake line, than another crush washer. Secure to caliper with elbow of new brake line facing the rear using 15mm socket.



7. Rotate brake line so that it is out of the way of any other objects. Torque down caliper bolt and finish tightening down steel brake line using the 12mm and 17mm wrench.



8. Bleed your brake lines and you're done!

Installation Instructions Written by ExtremeTerrain Customer David Paige 10/5/2015