



Enhanced Rubi Rails (18+ JL 4-Door)

Contents:

- (1) Driver Side Rubi Rail
- (1) Passenger Side Rubi Rail
- (6) M8 x 35mm Bolts
- (6) M8 Lock Washers
- (6) M8 Flat Washers
- (12) M6 Nuts
- (12) M6 Flat Washers
- (12) Pinch Weld Spacers

TOOLS REQUIRED:

- 10mm, 13mm Sockets
- Ratchet
- Clean Towel
- Cleaning Solution



STEP 1 //

Begin by locating the (3) pinch weld mounting locations under the vehicle.



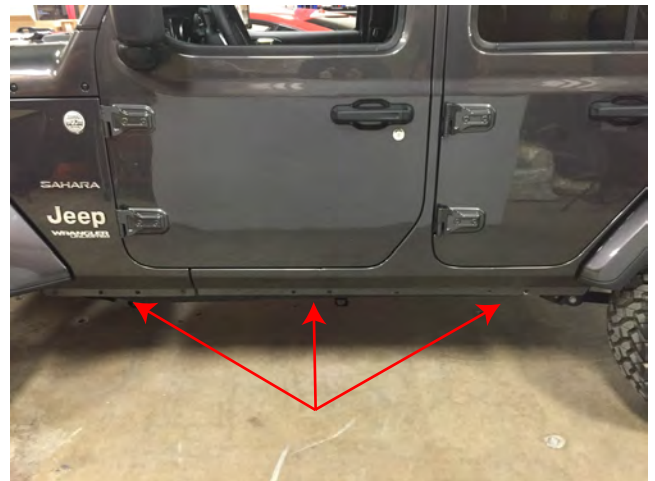
STEP 2 //

From under the vehicle, remove all (6) 10mm nuts holding the factory side step to the pinch welds of the vehicle.



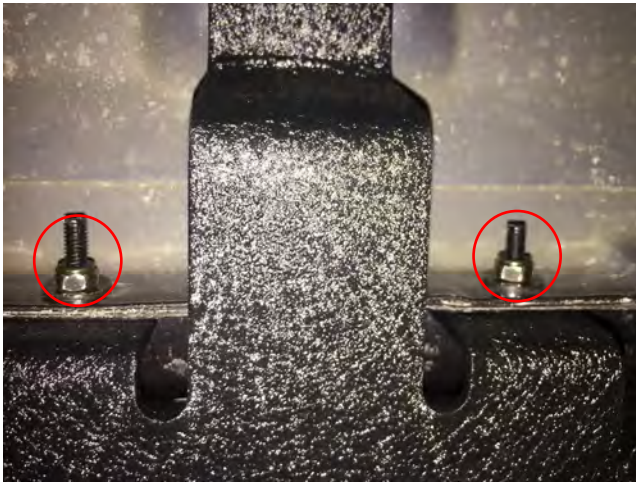
STEP 3 //

From under the vehicle, locate and remove each of the 13mm body mount bracket bolts. **Note factory side step will now be loose.



STEP 4 //

Carefully pull the side step away from the vehicle and downward to remove from the vehicle. Take this time to clean the pinch welds, and body mounts from any road debris.



STEP 5 //

Position the new Enhanced Rubi Rail with the pinch weld mounting holes and insert through the holes. Tighten the Rubi Rail using the (6) M6 nuts and washers to the pinch welds. **Due to vehicle manufacturing variances, it may be necessary to use the supplied spacers between the rubi rail and pinch weld. Begin by test fitting the part with no spacers. If the slider makes contact with the vehicle, start by using 3mm spacer and test fitment again. If contact is still occurring install the 5mm spacer. Use the least amount of spacers as possible to achieve desired fitment.



STEP 6 //

Once the Rubi Rails are tight to the pinch welds, install the (3) M8 x 35mm bolts, flat washers, and lock washers through the body mount brackets.



STEP 7 //

Double check installation to make sure everything is tight. Installation is now complete.