



American Made = American Jobs

**IRON CROSS**  
AUTOMOTIVE INC.

GP-JL 9466

Jeep Wrangler

**Jeep Steps**

[www.ironcrossautomotive.com](http://www.ironcrossautomotive.com)

## Installation Instructions

Hardware	
3	Driver-side Brackets
3	Passenger-side Brackets
6	8mm x 25mm Bolts
6	5/16" Carriage Bolts
12	5/16" x 1 Bolts
24	5/16" Flat Washers, Lock washers
18	5/16" Flange Nuts
6	Bracket Clamps

### Bracket Installation

1) Separate the brackets in your kit, there are (3) Passenger-side and (3) driver-side.

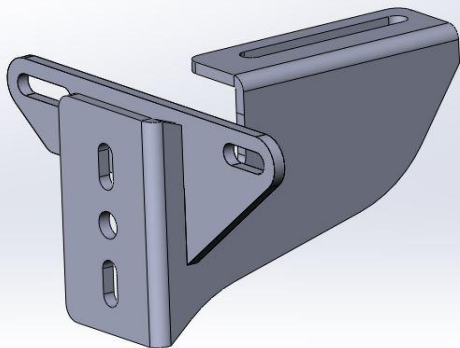
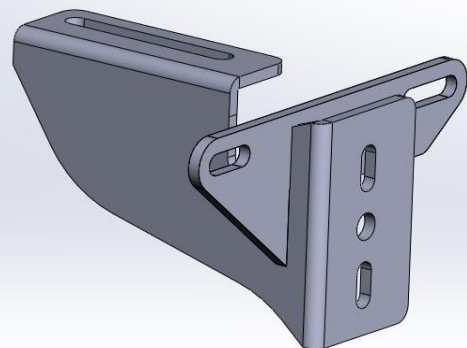


Fig 1

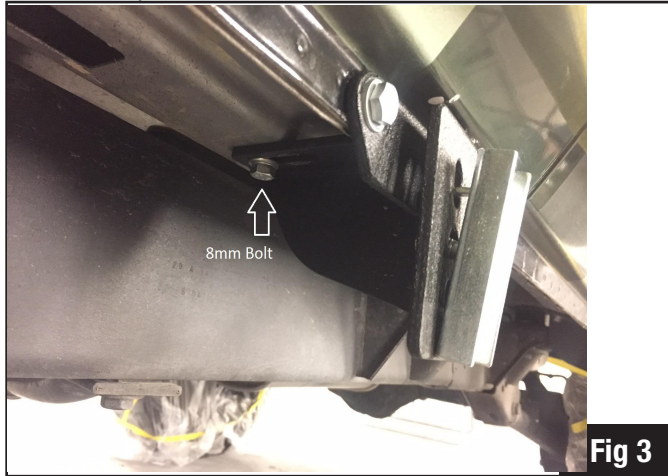
**PASSENGER-SIDE**



**DRIVER-SIDE**

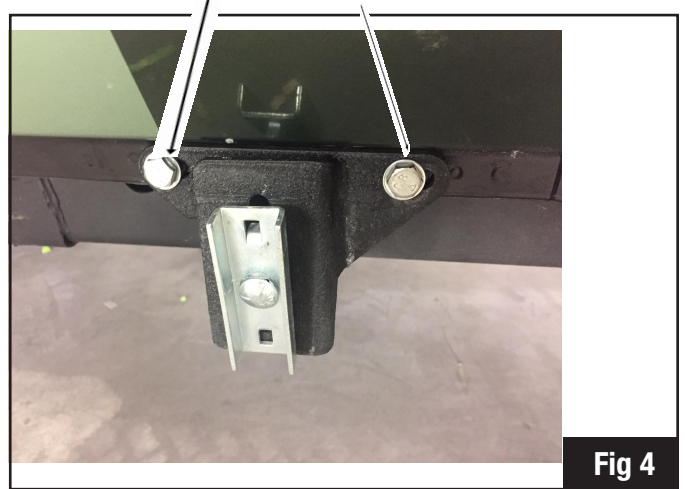
## Bracket Installation Continued...

2) Attach the brackets to the body. Use the 8mm bolt, lock washer and flat washer. Thread into the floorboard. (The 8mm bolts will be stamped 8.8 on the head). **Fig 3.**



3) Use (2) 5/16" bolts, flat washers, lock washers, and nuts to attach the bracket to the pinch weld as shown in **Fig 4.**

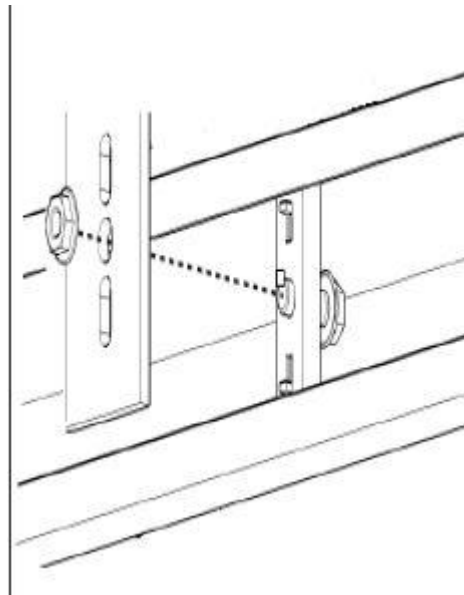
4) Tighten brackets to the body at this time to 18 ft/lbs.



## Side Arm Step Installation

1. Install 5/16" carriage bolt and "bracket clamp" to each bracket. Fig. 5
2. Carefully place sidearm step over bracket clamps and align so that clamp tabs are in between step channel. Begin to hand tighten 5/16" flange nuts while making sure bracket clamp tabs are aligning to the bracket holes.
3. Slide Side Arm Step front to rear and align and tighten all 5/16" flange nuts for final install.

Fig. 5



**IRON CROSS AUTOMOTIVE**

4942 E. 66th Street North,  
Tulsa, OK 74117

[www.ironcrossautomotive.com](http://www.ironcrossautomotive.com)