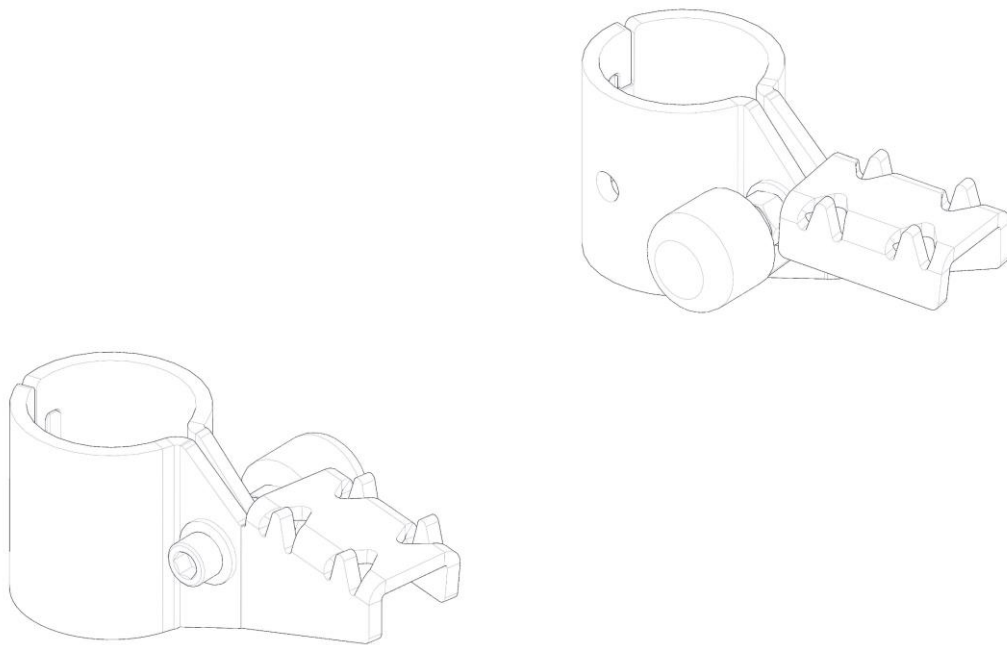




Installation Guide

60270



Kargo Master
Rancho Cordova, CA 95742
800-343-7486
CustomerService@Safari.com

DATE: _____

***PLEASE READ ALL INSTRUCTIONS AND WARNINGS PRIOR TO ASSEMBLING,
INSTALLING, AND USING THIS PRODUCT***

Warning



Always check for wires, fuel tanks and lines, brake lines and other important vehicle functionality items prior to drilling and installing all products.

Tools Needed

5/16" Allen Hex	9/16" Open End Wrench
-----------------	-----------------------

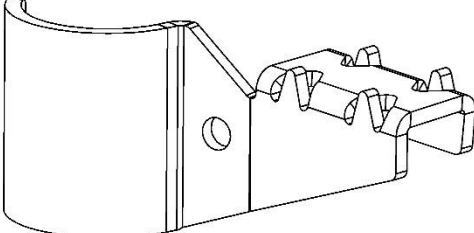
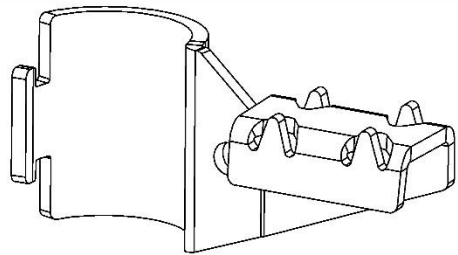
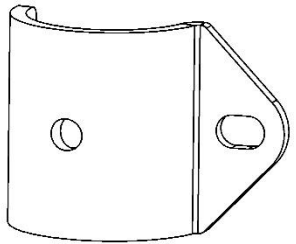
Table of Contents

Parts List	2
Hardware	2
Step 1 – Install Step	3
Step 2 – Against JEEP	3

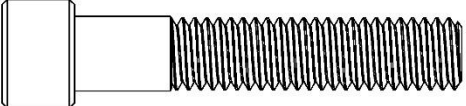
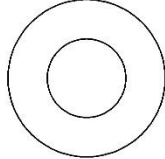
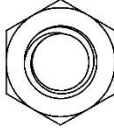
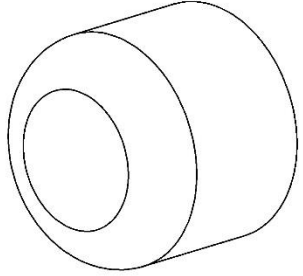
Before You Begin

- Read all instructions.
- Be sure to have a JK or JKU JEEP.
- Have a KargoMaster CongoPro or Congo Sport installed on vehicle.
- DO NOT TIGHTEN ANY BOLTS UNTIL ALL BOLTS ARE INSTALLED.

Parts

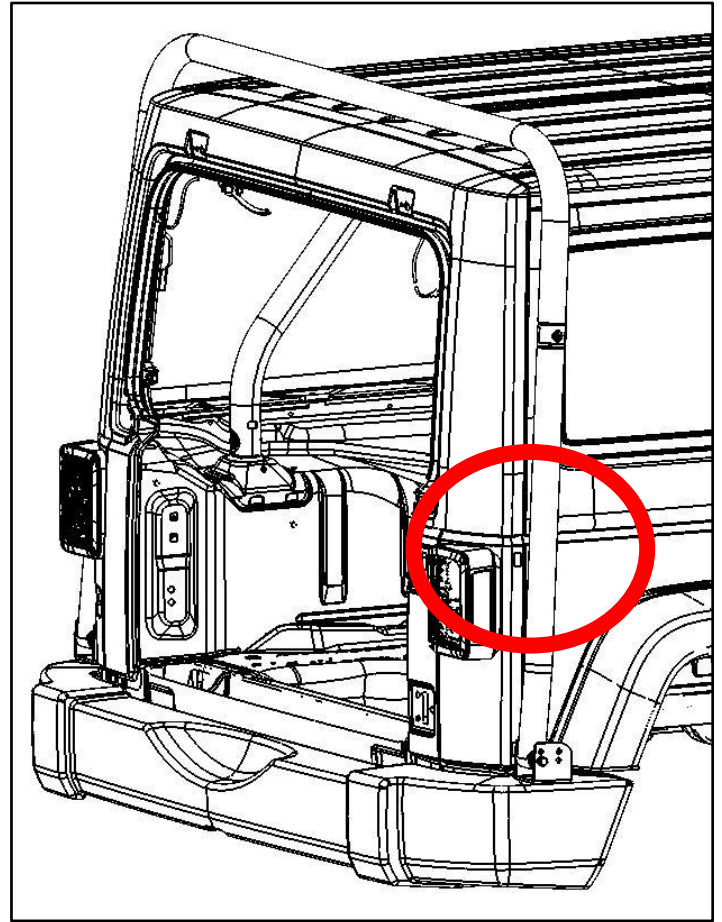
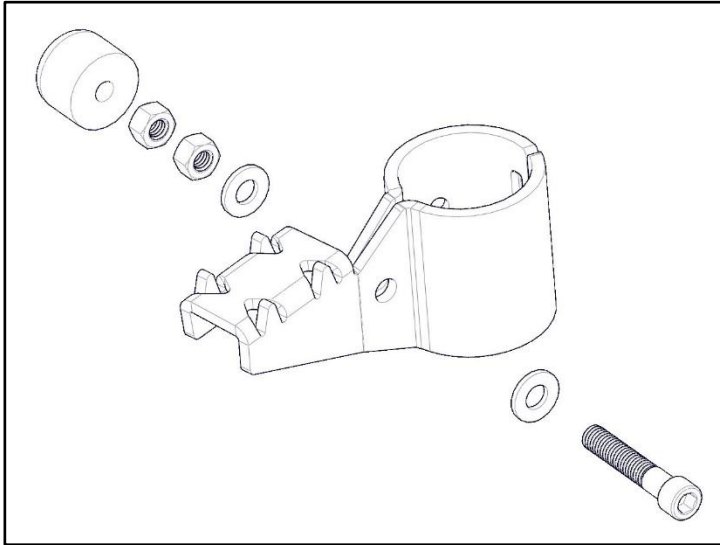
ITEM NO.		PART NUMBER	DESCRIPTION	QTY.
A		60270-00-001	DS Stabilizer Step	1
B		Mirror60270-00-001	PS Stabilizer Step	1
C		60270-00-002	Stabilizer Step Clamp	2

Hardware

ITEM NO.	TO SCALE	DESCRIPTION	PART NUMBER	QTY.
1		.375-16 x 2.0 BHCS	90128A632	2
2		.375 Flat Washer	90126A031	4
3		.375-16 Nut	95462A031	4
4		Bumper	89-CC-Bumper	2

Step 1 – Install Step

- Locate rear hoop of Congo system.
- Place step (A or B) and clamp (C) around tube.
- Bolt together using a 5/16 x 2.0 BHCS, two 5/16 flat washers (2), two 5/16 nuts (3) and one rubber bumper (4) in the orientation shown.
- Slightly Tighten, but allow movement.



Step 2 – Against JEEP

- Position the step so that the bumper meets the side of the JEEP. We recommend positioning the bumper as close to the body line of the JEEP as possible. This is the strongest part of the sheet metal.
- Tighten and repeat on other side.

YOUR INSTALLATION IS NOW COMPLETE

