

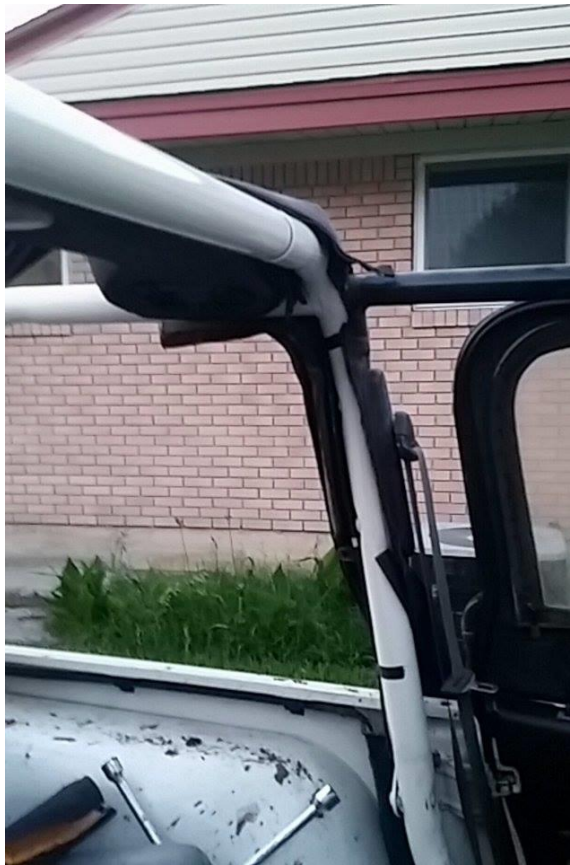
Smittybilt Cargo Restraint System (97-06 Wrangler TJ) Install Guide

Tools Required:

- 1.) Your hands.
- 2.) Smittybilt Cargo Restraint System

Install Instructions:

- 1.) First, start by removing the existing hard top or soft top if needed. (Pic. 1)



Pic. 1

- 2.) Toss the cargo net over your jeep and begin fastening the 3 straps around the top main sports bar. Don't tighten fully, this keeps the net from falling off while you install it. (Pic. 2)



Pic. 2

- 3.) Then, starting on the driver's side, begin attaching the plastic channel of the net into the retaining channel next to the door opening (Pic. 3)



Pic. 3

4.) Continue around the back until it's attached fully around to the passenger side. (Pic. 4 & 5)



Pic. 4



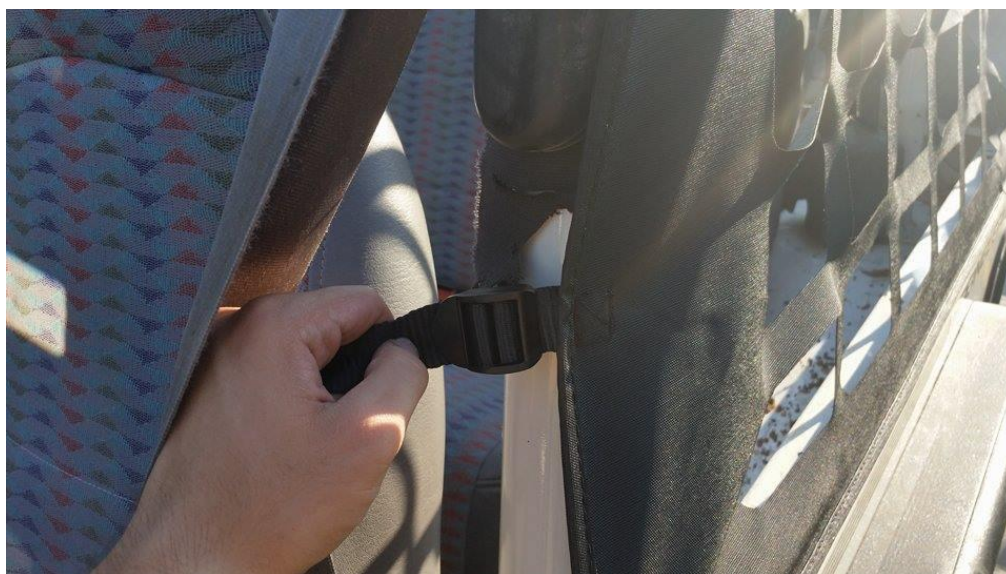
Pic. 5

5.) Then, strap the corner straps around and over the side of the sports bar. (Pic. 6)



Pic. 6

6.) Now, fasten the 2 side straps on either side of your vehicle along the side of the sports bar. If you have door surrounds on, just tuck the buckle under. (Pic. 7) Again, don't tighten just yet, just enough to keep the net in place.



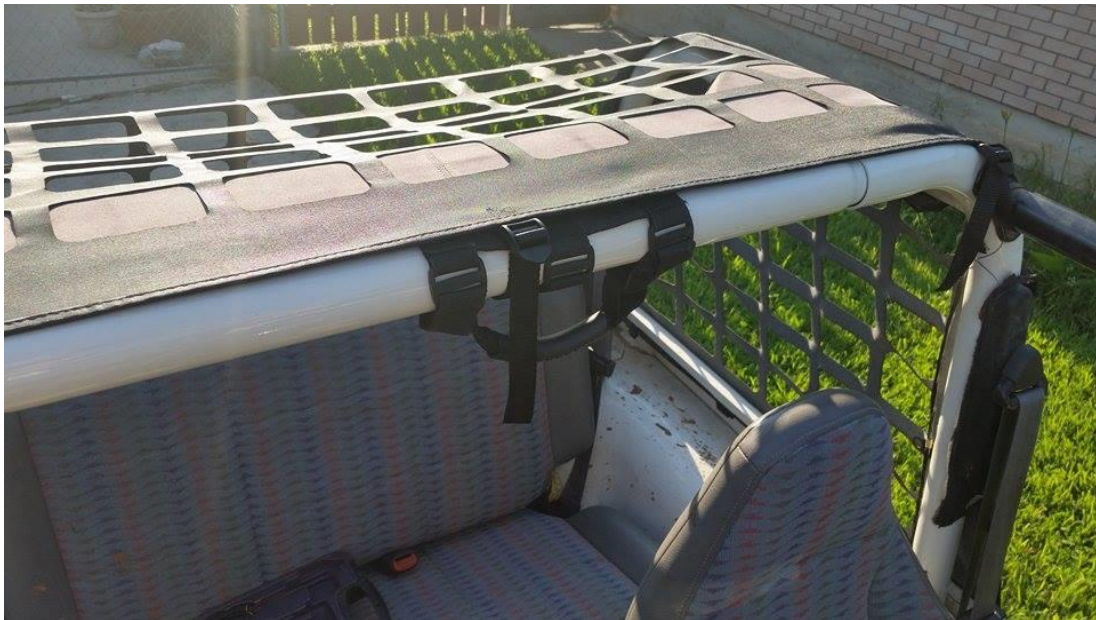
Pic. 7

7.) Next, slide the plastic channels into the retaining channel slots on your tailgate. (Pic. 8)



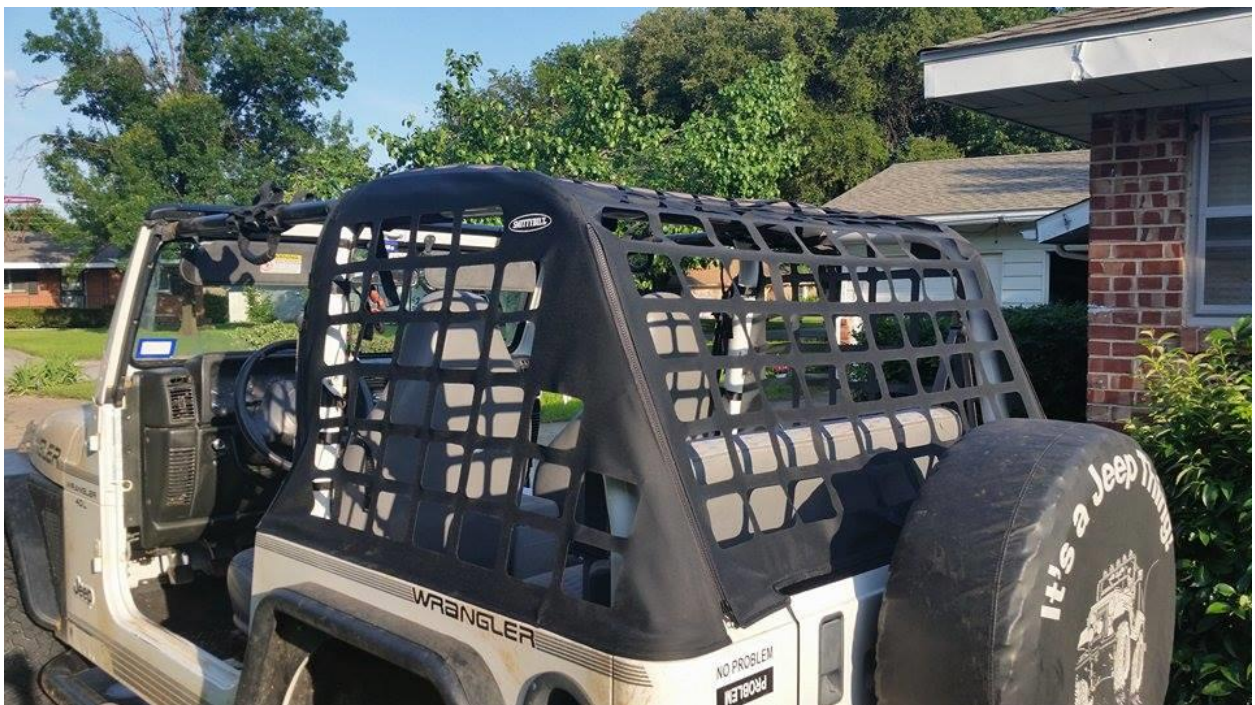
Pic. 8

8.) Last, fully tighten all straps around top and side sports bars and you're finished! (Pic. 9)



Pic. 9

Completed Pictures.



Install Guide Written By ExtremeTerrain Customer Timothy Pabalate 06/13/15