

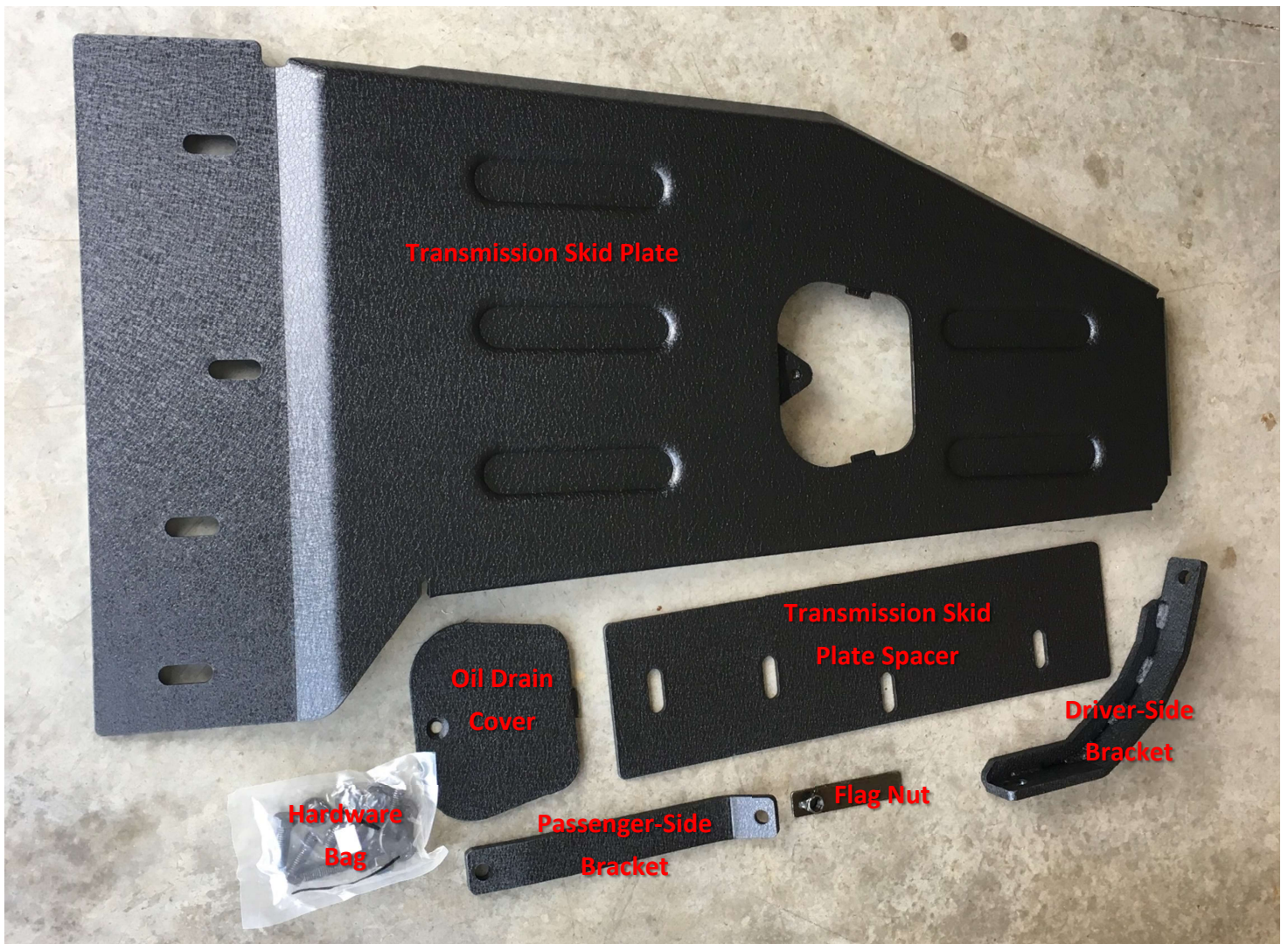
## Installation Instructions for Smittybilt XRC Engine & Transmission Skid Plate (07-11 Wrangler JK)

**Installation Time:** 2 hours

**Tools Required:**

- ✓ 18mm combination wrench
- ✓ 19mm combination wrench
- ✓ 6mm Allen wrench
- ✓ Floor Jack is helpful to raise and hold the skid plate during installation

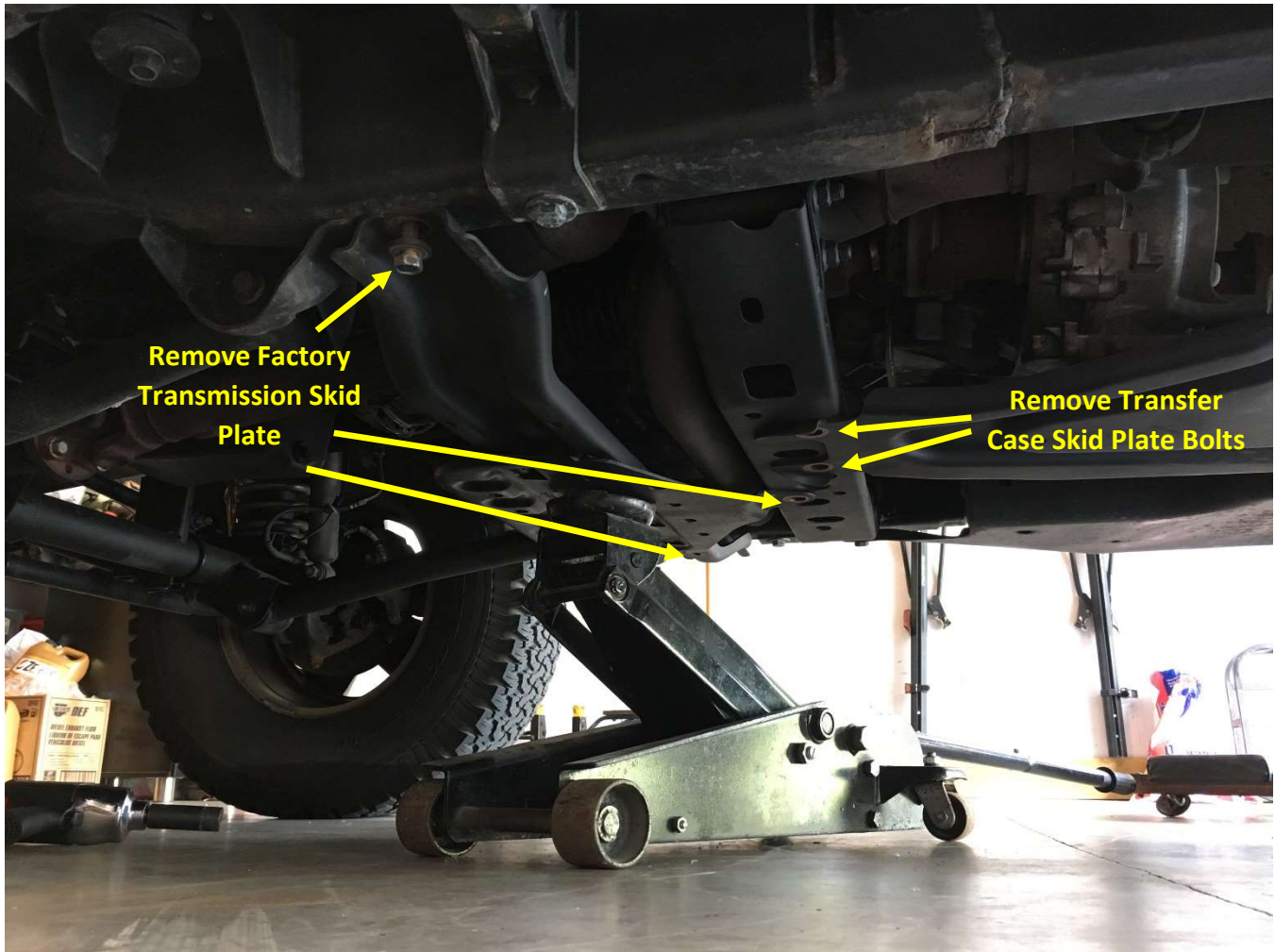
**What's Included:**



*Start the installation with your Jeep parked on a level surface and engage the parking brake. Depending on the amount of lift on your Jeep, you may not need to jack up your vehicle for this installation*

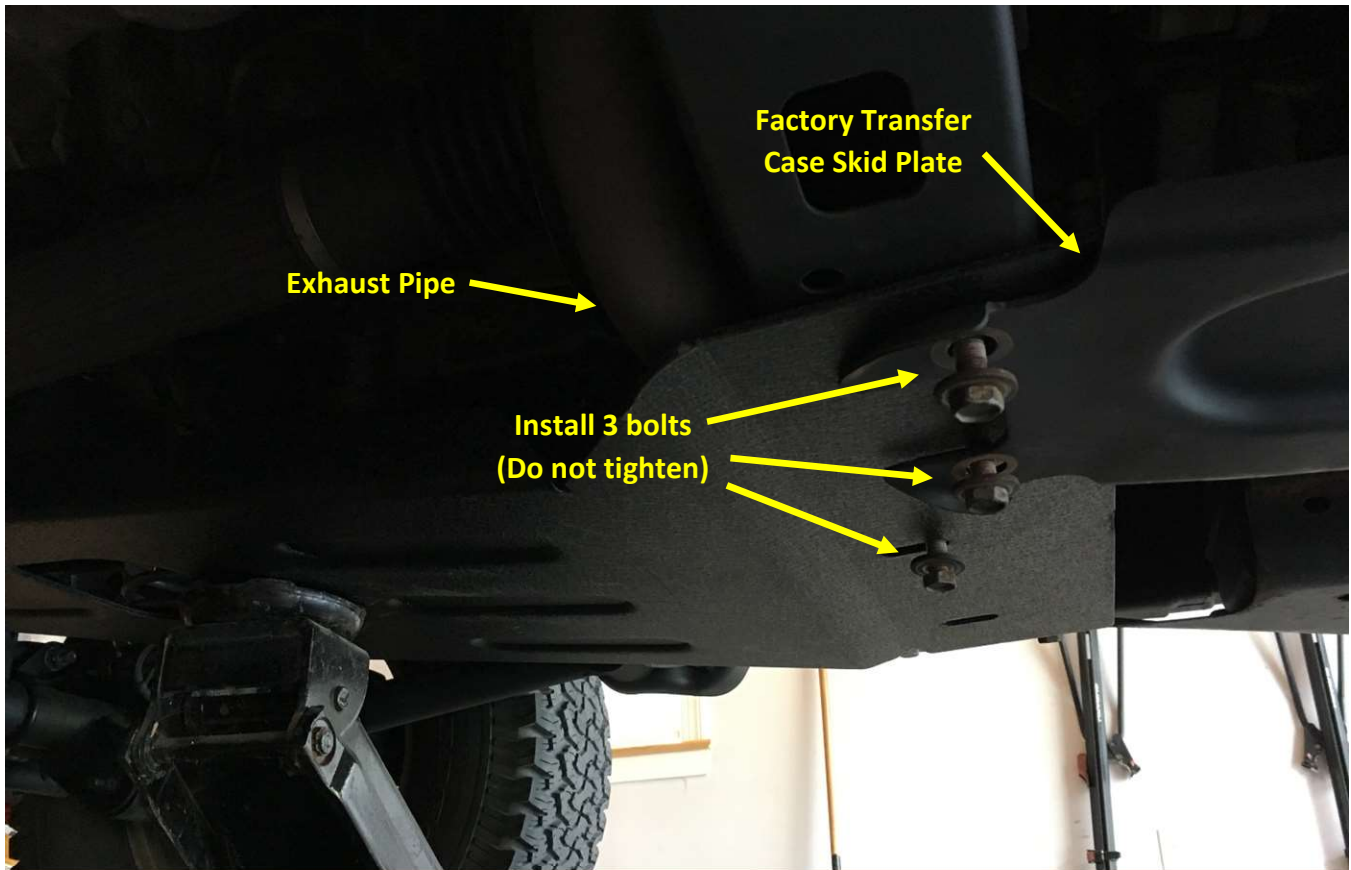
## Installation Instructions:

1. Remove any engine/transmission skid plates that are currently on your vehicle. This includes removal of the factory transmission skid plate as shown below by removing the 3 bolts securing it to the frame and crossmember (retain 1 of these bolts for later). Also remove the 2 crossmember bolts holding the transfer case skid plate (retain these bolts for later).

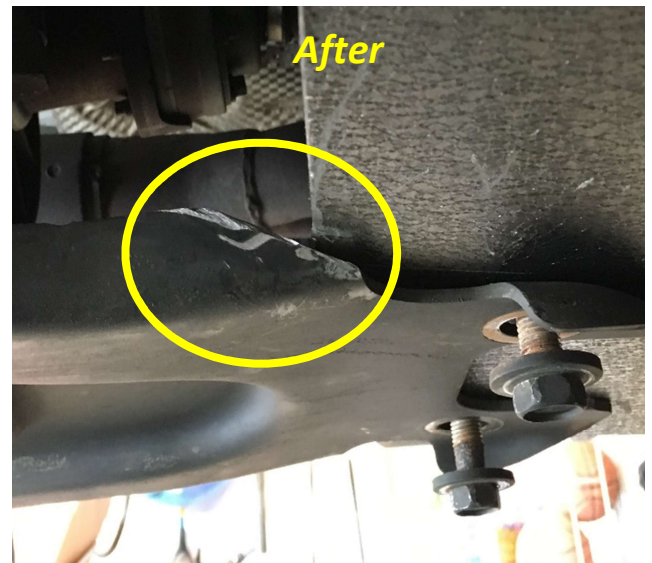
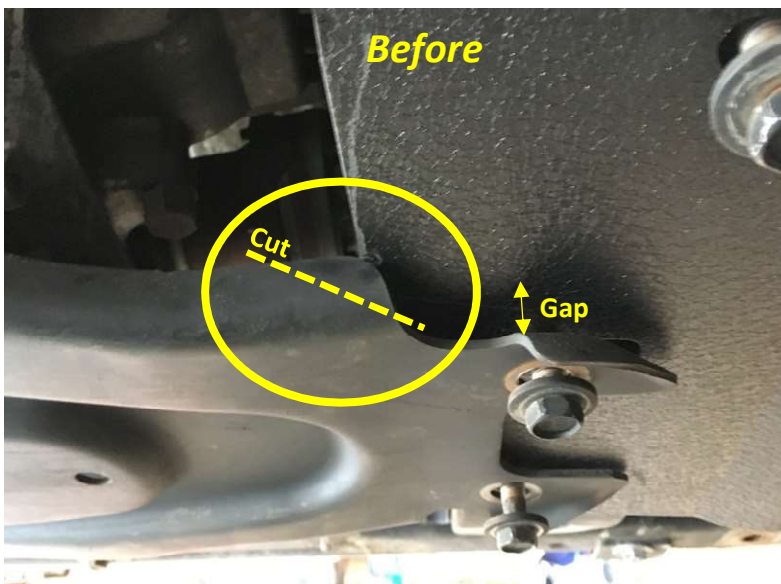




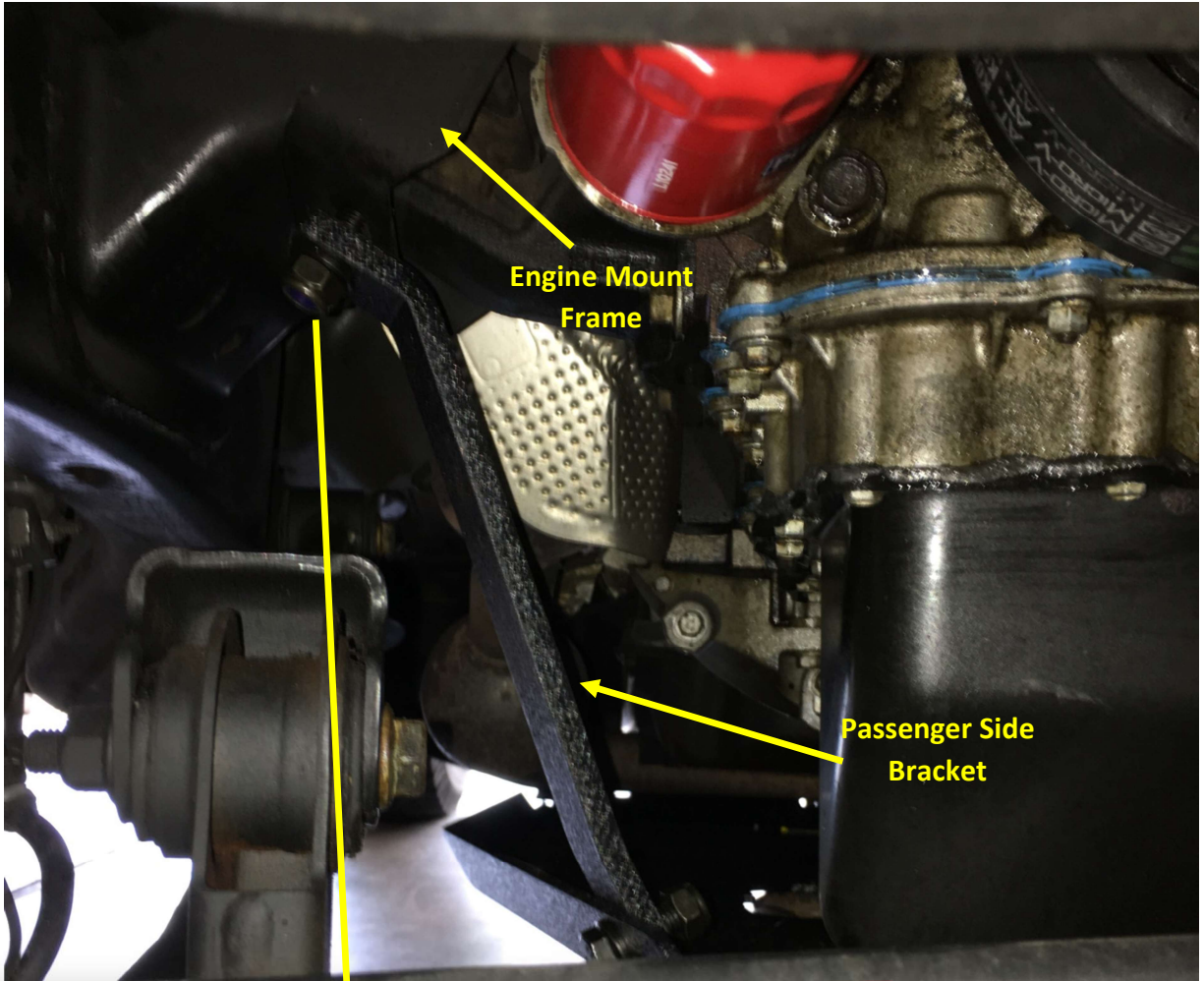
2. Install the transmission skid plate into position. Install the 3 previously retained bolts into the crossmember but do not tighten at this time. Leave these bolts loose to aid in alignment as you install the front brackets. If additional space is needed between the skid plate and exhaust pipe, use the transmission skid plate spacer. *Note: If installing the Smittybilt transmission skid plate in conjunction with the factory transfer case skid plate, place the transfer case skid plate on top of the transmission skid plate as shown below. If using an aftermarket transfer case skid plate, it is best to place it under the transmission skid plate to create a smooth transition for forward vehicle direction.*



*Note: If using the factory transfer case skid plate, interference may be present at the formed gusset on the passenger side with the new transmission skid plate. Cut the corner of the gusset off to allow the transfer case skid plate to sit flush against the transmission skid plate. This interference may not occur on all models/years.*

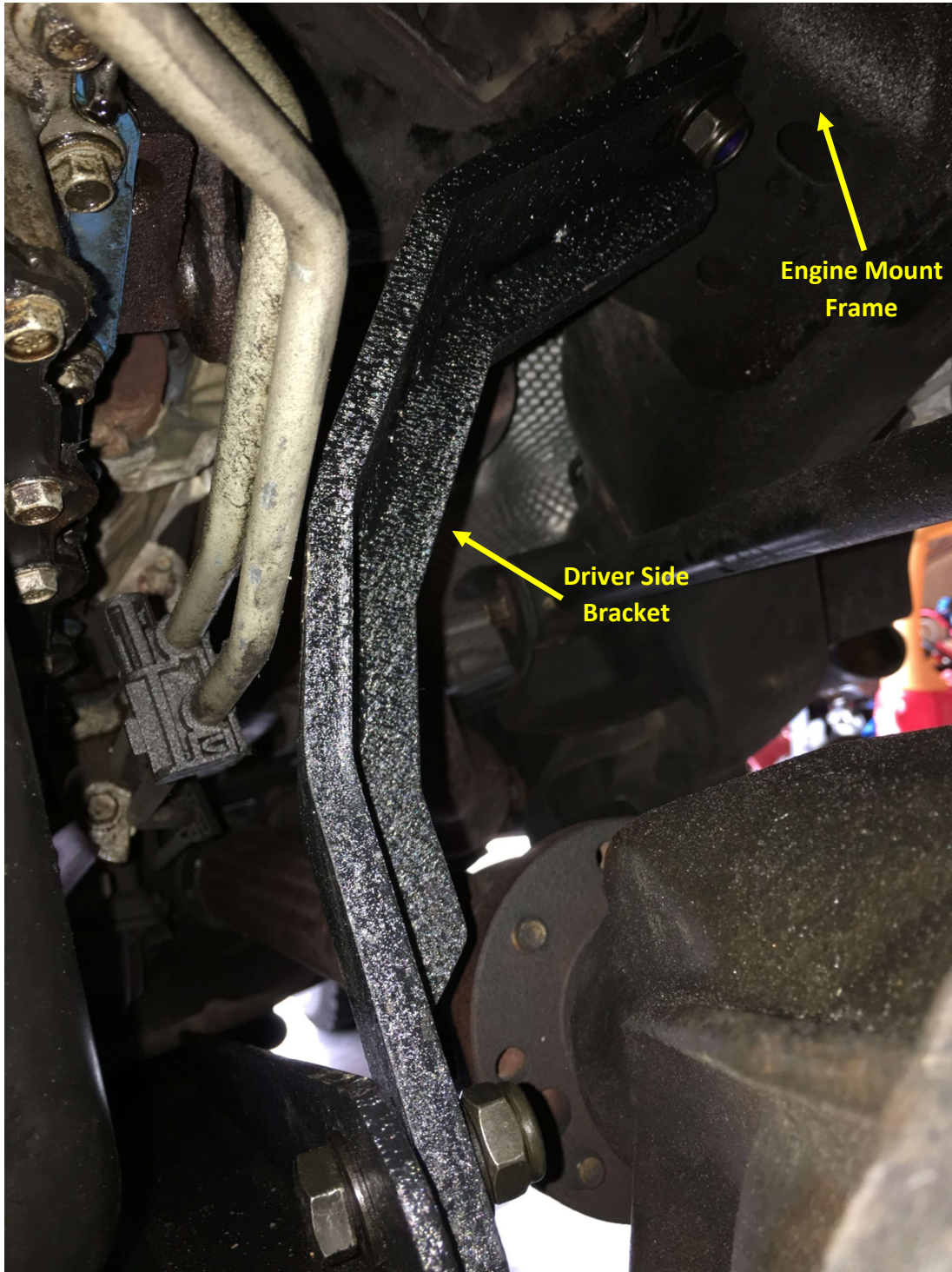


3. Install the passenger side transmission skid plate bracket between an existing hole in the engine mount frame and the passenger side hole in the front of the transmission skid plate. Use a 1/2"x1" bolt, 2 washers & locking nut for each connection. Install the bolts but do not fully tighten at this time.





4. Similarly, install the driver side transmission skid plate bracket between an existing hole in the engine mount frame and the driver side hole in the front of the transmission skid plate. Use a  $\frac{1}{2}$ "x1" bolt, 2 washers & locking nut for each connection. Install the bolts but do not fully tighten at this time.

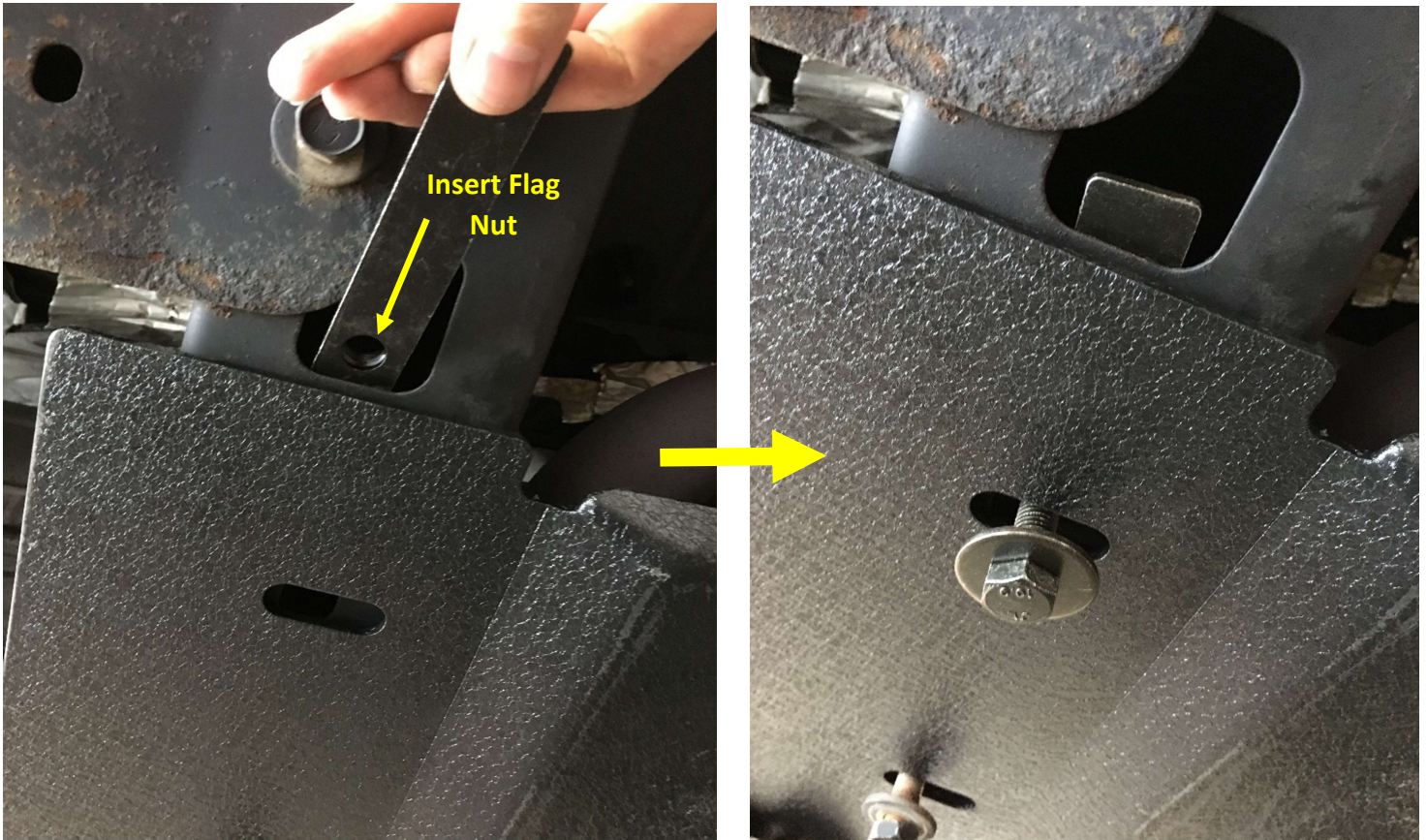


5. Install the access cover for the engine oil pan drain plug using the supplied 7/16" flat head cap screw and a 6mm Allen wrench. Tip: coat the bolt threads with grease or anti-seize for easy removal later for oil changes.





6. Use the supplied  $\frac{1}{2}$ "x1-1/2" bolt, large washer & flag nut for the final connection between the transmission skid plate and crossmember on the passenger side. Insert the flag nut in the passenger side hole in the crossmember and insert the bolt through the slot in the skid plate.



7. Torque all 6 bolts to the proper spec using 18mm & 19mm wrenches (i.e.  $\frac{1}{2}$ " hardware to 90 ft-lbs).

