



WWW.SMITTYBILT.COM

Installation Instructions

Bowless Top

(Part #9973235 97-06 TJ)

(Part # 9083235 07-15 JK 4-Door)

(Part # 9073235JK 07-15 2-Door)

Note: Read instructions entirely before installing this product. It is recommended to install this product when temperatures are above 75 degrees. If temperatures are below this; the material can contract up to an inch. Wrinkles from packaging will go away once the material relaxes. Vehicle picture may vary from your actual vehicle.

NOTE: You will need to have the following to install this part correctly.

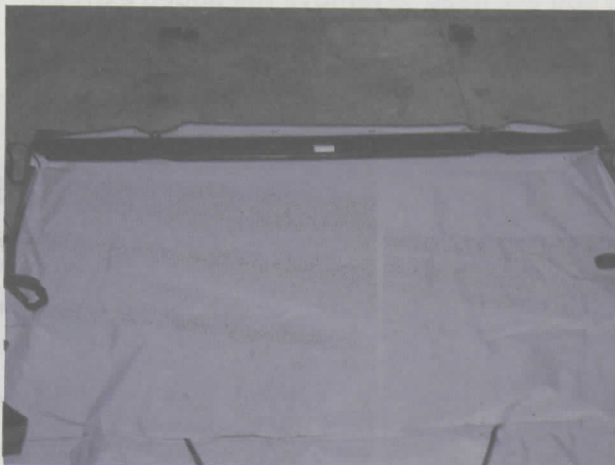
1. Windshield Header (Smittybilt Part #90104 TJ , # 90105 JK)
2. Tailgate retaining bar and brackets.
3. OE Door Surrounds

Step 1: Remove your hardtop or soft top and bow assembly. (If equipped).

Step 2: JK- Lay the center extended top section on a clean surface. Remove the knobs and latch Bracket from your header and then slide header into the front of the top. Connect the snaps on the top to the ones on the header. (Fig A, B)

TJ- Mount header on TJ windshield frame per header instructions.

Step 3: Lay the header on top of the windshield frame and spread top back over vehicle. (Fig C)



(Fig A)



(Fig B)

For Technical Support/Warranty Information please call 310-762-9944

Smittybilt, 400 West Artesia Blvd, Compton, CA 90220



WWW.SMITTYBILT.COM

Installation Instructions

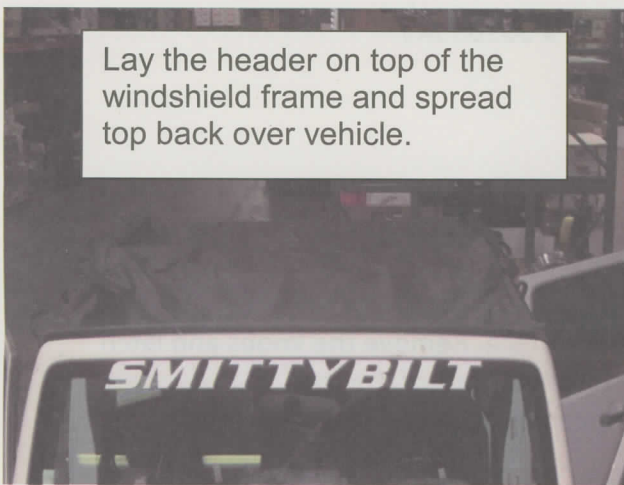
Bowless Top

(Part #9973235 97-06 TJ)

(Part # 9083235 07-15 JK 4-Door)

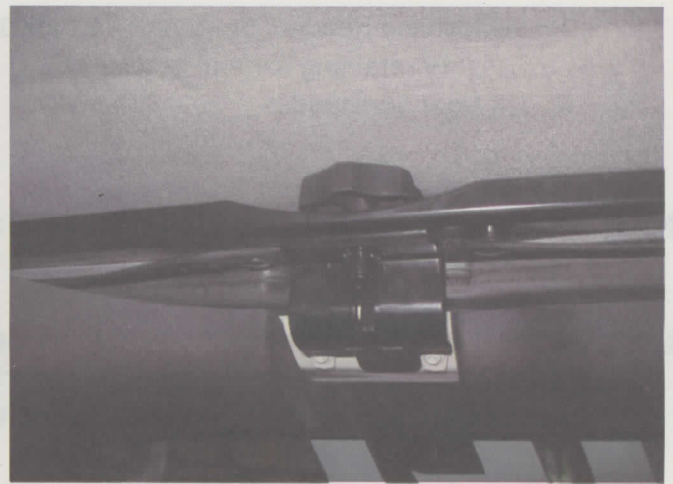
(Part # 9073235JK 07-15 2-Door)

Step 4: Reattach the brackets to the header using the knobs (JK) or clamps (TJ) previously removed and secure the header. (Fig D). TJ: Slide plastic channel into header. It helps to keep slight tension to keep it in place.



Lay the header on top of the windshield frame and spread top back over vehicle.

(Fig C)



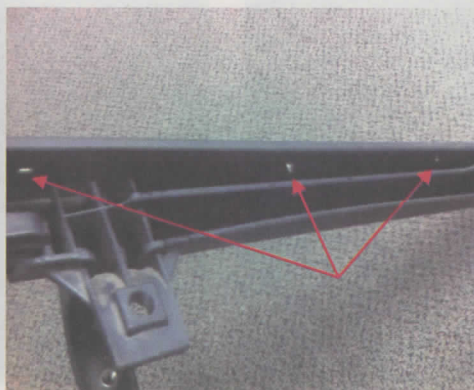
(Fig D)

(2010-2014 Models)

If you have a 2010-2014 model you will need to make a small modification to the door surrounds. To utilize the channel on the top part of the door surround you will need to remove the added extrusion on them by removing the staples that hold them on. FIG (E,F,G, AND H.)



(Fig E)



(Fig F)



(Fig G)

For Technical Support/Warranty Information please call 310-762-9944

Smittybilt, 400 West Artesia Blvd, Compton, CA 90220



WWW.SMITTYBILT.COM

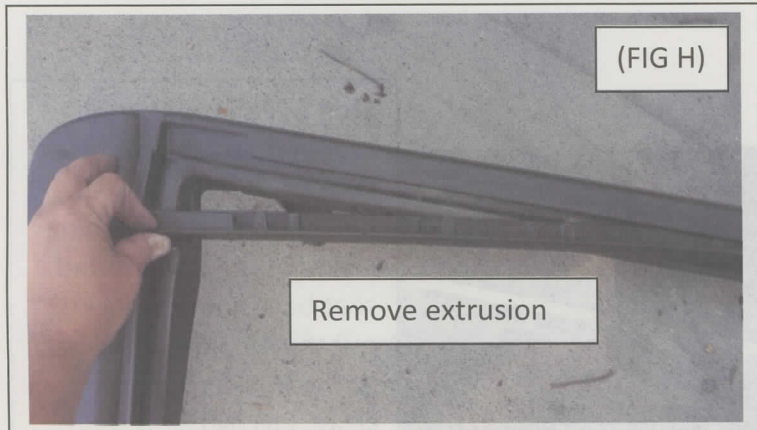
Installation Instructions

Bowless Top

(Part #9973235 97-06 TJ)

(Part # 9083235 07-15 JK 4-Door)

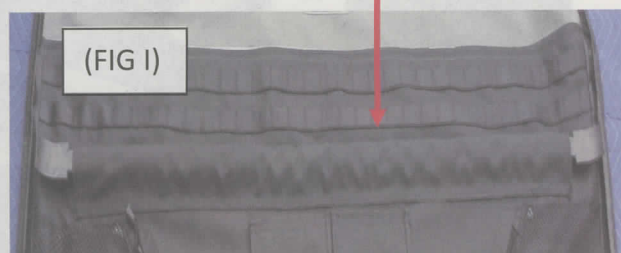
(Part # 9073235JK 07-15 2-Door)



(FIG H)

Remove extrusion

Step 5: Install front and rear cross bars into the sewn in channels. Longer crossbar goes in the front. The front cross bar will sit inside the door surround. FIG (I)



(FIG I)

Step 6: Insert the plastic channel into door surrounds. Pull top towards rear of jeep to make the front part of the top over the doors smooth. FIG (J)



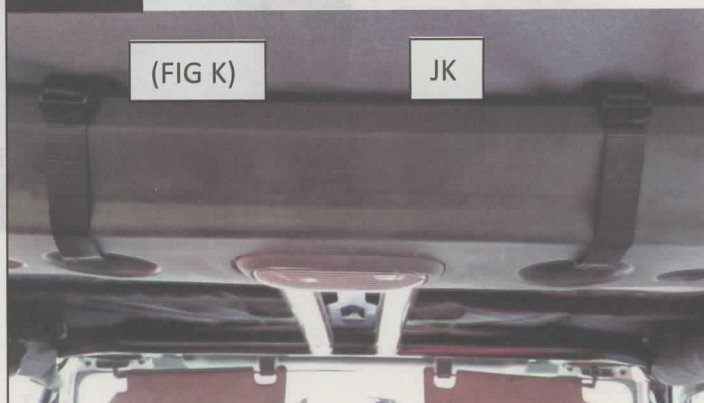
(FIG J)

Step 7:

JK: wrap center straps around rear of roll bar and attach j-hook into opening in sound bar. FIG (K)

TJ: Wrap center strap around roll bar and thru footman loop on windshield. FIG (L)

Pull straps to tighten top. **DO NOT OVER TIGHTEN DO NOT USE TOOLS TO TIGHTEN.**



(FIG K)

JK

For Technical Support/Warranty Information please call 310-762-9944

Smittybilt, 400 West Artesia Blvd, Compton, CA 90220



WWW.SMITTYBILT.COM

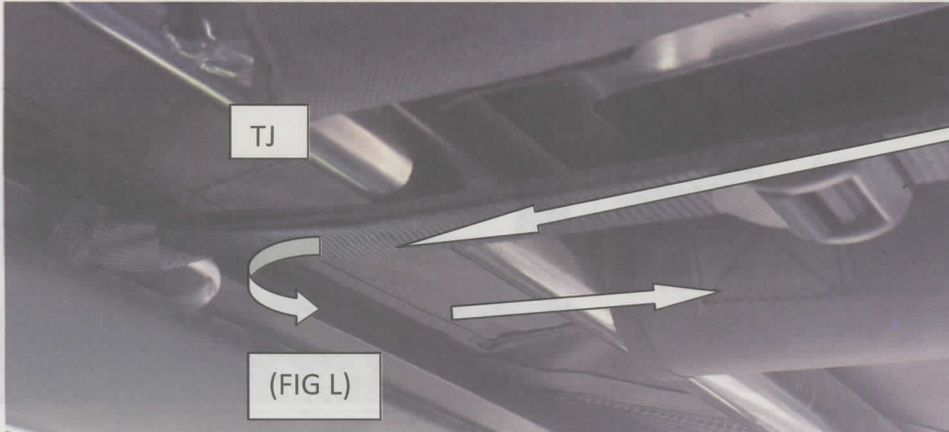
Installation Instructions

Bowless Top

(Part #9973235 97-06 TJ)

(Part # 9083235 07-15 JK 4-Door)

(Part # 9073235JK 07-15 2-Door)



Step 8: Pull top toward rear and attach seat belt straps around rear seat belt stud. Strap will go on inside of roll bar, around seat belt bolt and back out the outside of roll bar to the buckle. Tighten strap. FIG (M).

NOTE: Make sure strap does not interfere with seat belt operation.



For Technical Support/Warranty Information please call 310-762-9944

Smittybilt, 400 West Artesia Blvd, Compton, CA 90220



WWW.SMITTYBILT.COM

Installation Instructions

Bowless Top

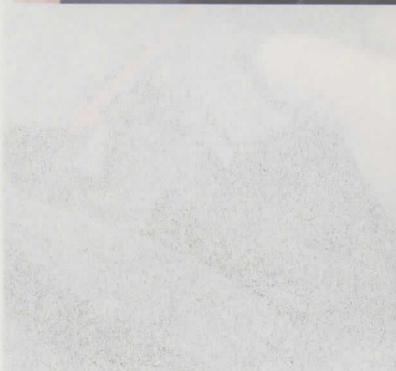
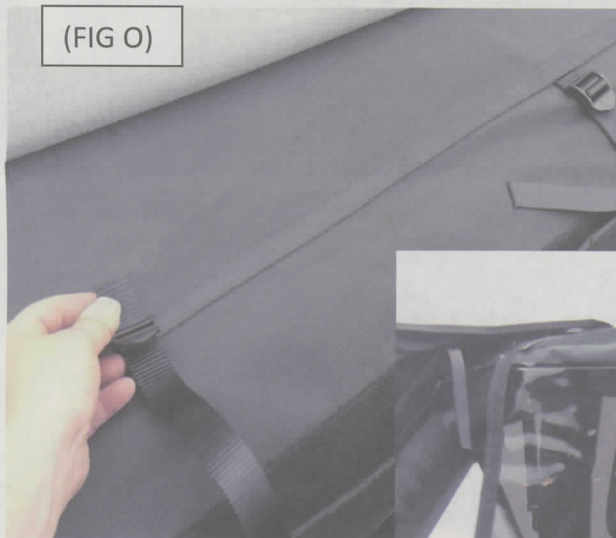
(Part #9973235 97-06 TJ)

(Part # 9083235 07-15 JK 4-Door)

(Part # 9073235JK 07-15 2-Door)

Step 9: Attach side windows by first zipping them on half way, then insert plastic channel into door surround. Leave bottom loose. FIG (N)

Step 10: Attach rear window to the 3 straps along the main top. Then loosely attach side window top strap. It will go over the rear window strap. FIG (O+P)



For Technical Support/Warranty Information please call 310-762-9944

Smittybilt, 400 West Artesia Blvd, Compton, CA 90220



WWW.SMITTYBILT.COM

Installation Instructions

Bowless Top

(Part #9973235 97-06 TJ)

(Part # 9083235 07-15 JK 4-Door)

(Part # 9073235JK 07-15 2-Door)

(FIG Q)

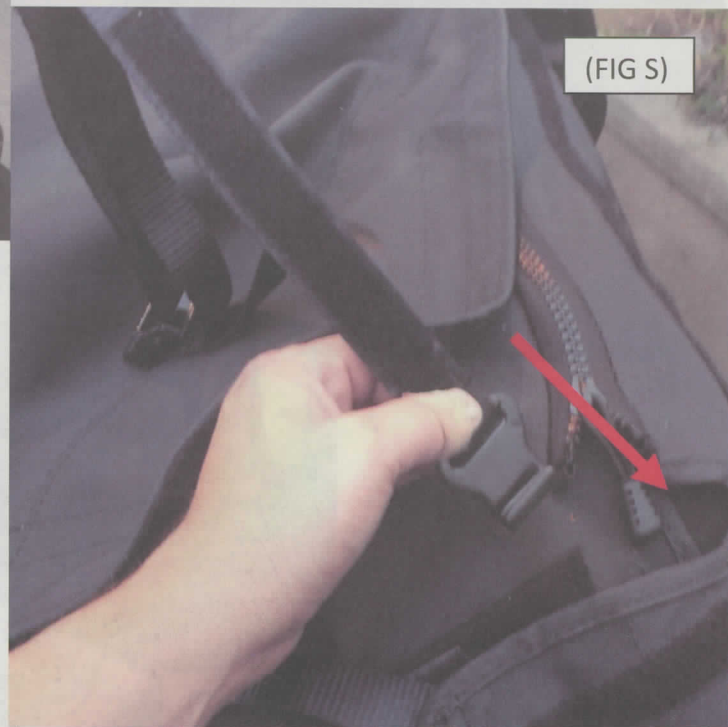


Step 11: Insert main top adjustable corner strap through the corner where side window and rear window meet. You will attach and tighten these once all components are in place. FIG (Q)

(FIG R)



(FIG S)



For Technical Support/Warranty Information please call 310-762-9944

Smittybilt, 400 West Artesia Blvd, Compton, CA 90220



WWW.SMITTYBILT.COM

Installation Instructions

Bowless Top

(Part #9973235 97-06 TJ)

(Part # 9083235 07-15 JK 4-Door)

(Part # 9073235JK 07-15 2-Door)



(FIG T)

Step 12: Attach rear window zipper to side window zipper. Zip half way down. Install your tailgate retaining bar onto rear window. FIG (T).

For Technical Support/Warranty Information please call 310-762-9944

Smittybilt, 400 West Artesia Blvd, Compton, CA 90220



WWW.SMITTYBILT.COM

Installation Instructions

Bowless Top

(Part #9973235 97-06 TJ)

(Part # 9083235 07-15 JK 4-Door)

(Part # 9073235JK 07-15 2-Door)

Step 12: Attach rear window zipper to side window zipper. Zip half way down. Install your tailgate retaining bar onto rear window. FIG (T)

Step 13: Finish installing side windows into the belt rail, starting in front and working your way back. Stop and install tailgate bar into retainers before going around the rear corner. Then zip side windows on completely. Now clip the adjustable strap on onto the body tub next to the tail gate bar retainer and tighten. FIG (U). **DO NOT OVER TIGHTEN.** Next completely zip rear window.



Step 14: Close all Velcro enclosures.

For Technical Support/Warranty Information please call 310-762-9944

Smittybilt, 400 West Artesia Blvd, Compton, CA 90220



WWW.SMITTYBILT.COM

Installation Instructions

Bowless Top

(Part #9973235 97-06 TJ)

(Part # 9083235 07-15 JK 4-Door)

(Part # 9073235JK 07-15 2-Door)



Care and Maintenance

-TOP, The top should only be washed with soap and warm water. Do not use an abrasive cleaner or rag. Especially on the windows. Do not wipe a dry window.

-SEAMS, if seeps happen to occur in seams they can be treated with a Scotch guard type of spray. Patches can also be applied

-ZIPPERS, Lube with a quality zipper lube. If zipper separates below the slider, it may have opened up slightly. Return zipper back to opening and squeeze the zipper with pliers. Your goal is to make the zipper slides parallel.

For Technical Support/Warranty Information please call 310-762-9944

Smittybilt, 400 West Artesia Blvd, Compton, CA 90220



WWW.SMITTYBILT.COM

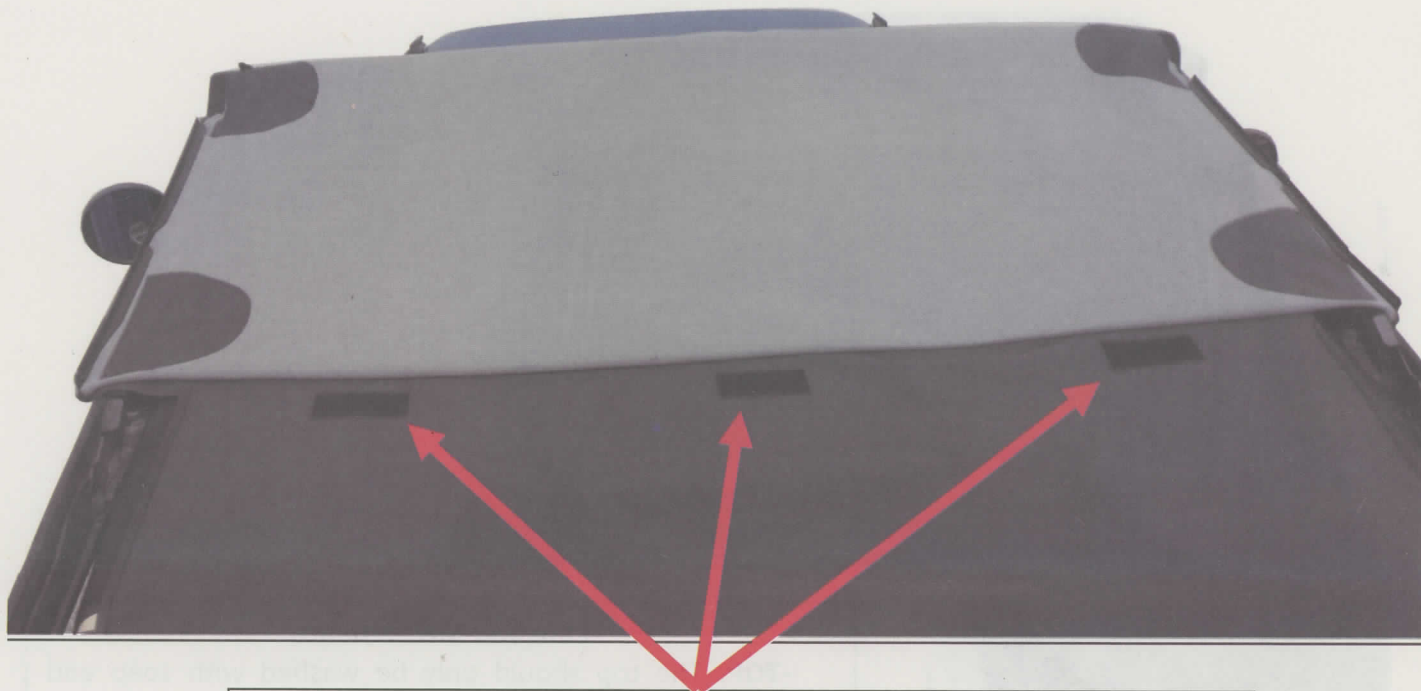
Installation Instructions

Bowless Top

(Part #9973235 97-06 TJ)

(Part # 9083235 07-15 JK 4-Door)

(Part # 9073235JK 07-15 2-Door)



Included with your bowless top is a window storage bag. The bag has Velcro to secure it under the main rear flap. Simply fill your bag with your windows and secure bag to the 3 Velcro locations. Then secure the main flap with the adjustable straps to the body tub.

For Technical Support/Warranty Information please call 310-762-9944

Smittybilt, 400 West Artesia Blvd, Compton, CA 90220



WWW.SMITTYBILT.COM

Installation Instructions

Bowless Top

(Part #9973235 97-06 TJ)

(Part #.9083235 07-15 JK 4-Door)

(Part # 9073235JK 07-15 2-Door)



For Technical Support/Warranty Information please call 310-762-9944

Smittybilt, 400 West Artesia Blvd, Compton, CA 90220



WWW.SMITTYBILT.COM

Installation Instructions

Bowless Top

(Part #9973235 97-06 TJ)

(Part # 9083235 07-15 JK 4-Door)

(Part # 9073235JK 07-15 2-Door)



(JK4)

For Technical Support/Warranty Information please call 310-762-9944

Smittybilt, 400 West Artesia Blvd, Compton, CA 90220



WWW.SMITTYBILT.COM

Installation Instructions

Bowless Top

(Part #9973235 97-06 TJ)

(Part # 9083235 07-15 JK 4-Door)

(Part # 9073235JK 07-15 2-Door)

Limited Warranties

Smittybilt's products are covered under the following limited warranties only. Note that the duration of the limited warranty differs according to the material and finish of the product purchased. Subject to the duration and conditions of the limited warranty stated below, Smittybilt warrants to the original retail purchaser that its products are free from defects in material and workmanship. All other warranties and representations express or implied are hereby disclaimed, including fitness for merchantability and buyer's intended use or purpose. All parts are sold "AS IS" except for the limited warranties granted herein. Buyer assumes all risks as to the selection, suitability and performance of all goods and products selected. This limited warranty does not cover damage or impairment in any part due to misuse, improper installation, accident or contact with on-road or off-road hazards, product modification, improper or inadequate cleaning and/or maintenance. Smittybilt is not responsible for items damaged during shipping. This warranty is not transferable from the original buyer. For the original Buyer to be eligible for the limited warranty coverage, the Buyer must provide proof of purchase. Smittybilt strongly recommends returning the warranty registration card.

Customer's remedy hereunder shall be limited only to repair or replacement (at Smittybilt's option) of any defective part(s) returned to Smittybilt at customer's expense. The determination of whether or not a returned part is defective or subject to coverage under the limited warranties stated herein shall be made at Smittybilt's sole discretion.

To assure product quality, Smittybilt reserves the right to change product design, material, specification and finishes without prior notice to customers. This limited warranty gives you specific legal rights and you may also have other rights, which may vary from state to state. Some states do not allow limitations on how long an implied warranty lasts, so the above limitations may not apply as to you. Also, some states do not allow the exclusion or limitation of incidental or consequential damages, so the above limitations or exclusions may not apply to you. Smittybilt reserves the right to discontinue product lines and substitute products, or provide other remedies than those listed in this limited warranty for those discontinued products.

Warning

Rollover and other types of vehicle accidents may result in serious injury or death to you, your passengers and others sharing the road. Smittybilt accessories are decorative and are not intended to reduce or avoid injury or damage in the event of an accident. The weight and location of Smittybilt accessories may affect your vehicles' handling, stability and performance, creating an increased risk of accident or rollover. Before installing any accessory, check state laws and assure that the accessory will not obscure any lights or interfere with proper operation on your vehicle's safety equipment. Consult your owner's manual and the Smittybilt instructions, or additional safety information. Smittybilt products, nor the warnings contained herein, are not a substitute for your safe driving. Don't drink and drive, always use seat belts and don't drive faster than conditions permit.

For Technical Support/Warranty Information please call 310-762-9944

Smittybilt, 400 West Artesia Blvd, Compton, CA 90220



Soft Top Care and Maintenance Information

Zippers

Keep the zipper cleaned and lubricated with a silicone lubricant, this will help prevent damage and keep the zippers in working order. If the zipper opens behind the slider, the slider may have been spread apart. This problem can usually be repaired by using a pair of pliers to return the zipper slider back to being parallel. Return slider to the end of the zipper in the normal open position, squeeze lightly at first and test the zipper. If the zipper continues to remain open squeeze more firmly with the pliers and try the zipper again. Repeat this procedure until the zipper operates correctly.

Fabric

Only use soap, warm water and a soft/fine bristle brush. Make sure to rinse thoroughly with clean water in order to remove all soap residues. If overtime you develop seeps through the seams, they can be stopped by using 3M Scotch guard. Small rips or tears can be repaired using Bondex iron patches installed from the inside.

Windows

Use a soft water soaked cloth or sponge with a mild soap. To avoid any scratches do not clean the windows while they are dry. Do not use any type of brush to clean the windows. Use care in cold weather environments. The lower the temperature the higher the risk of scratches and or cracks.

Snaps

Keep snaps clean of dirt and grime. Periodically lubricate them with silicone to help prevent them from sticking. If snap is hard to remove using care use a flat head screwdriver to gently separate snap. If a snap breaks completely it can be replaced using a Smittybilt Snap Repair Kit.
