

Baja Designs A-Pillar Mount Kit

Installation Guide for Jeep Wrangler 2-Door JK

Installation Time: <1 Hour

Tools Required:

- ✓ Box Cutter or Knife for Packaging
- ✓ Torx 40 Bit

Ensure all hardware is included before beginning installation.

Installation Instructions:

1. Carefully open your box and ensure both mounts are included (Figure A).



Figure A

2. Once you've unboxed all the items, remove the two front-facing torx bolts from the driver's side A-Pillar (Figure B) using a torx 40 bit.

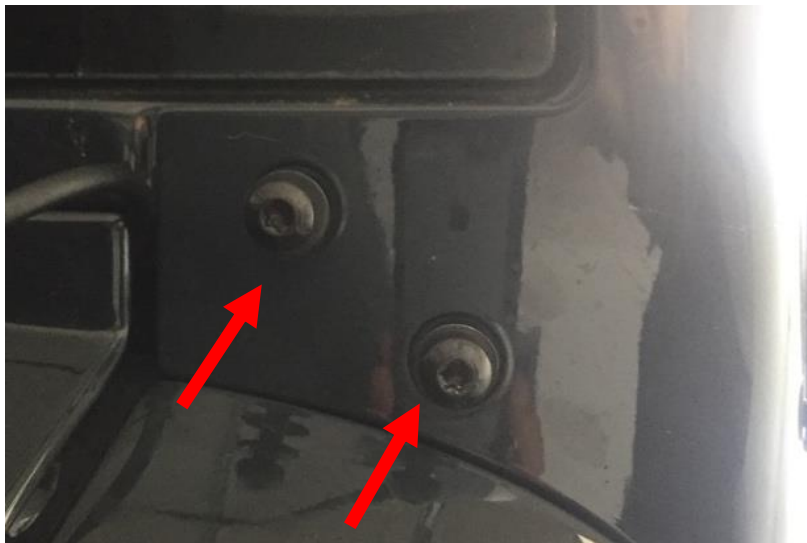


Figure B

3. Align the mount (Figure C) and replace the two front-facing torx bolts to secure the mount in place (Figure D).

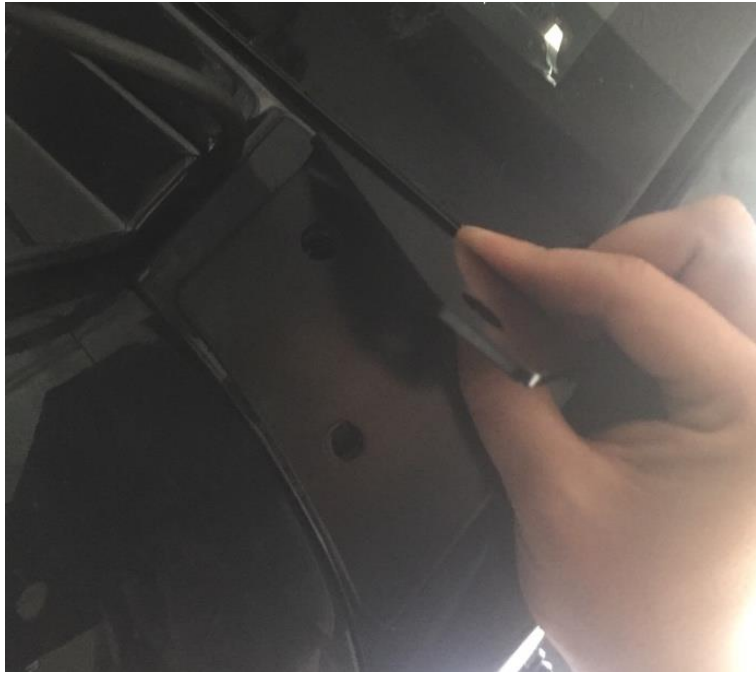


Figure C



Figure D

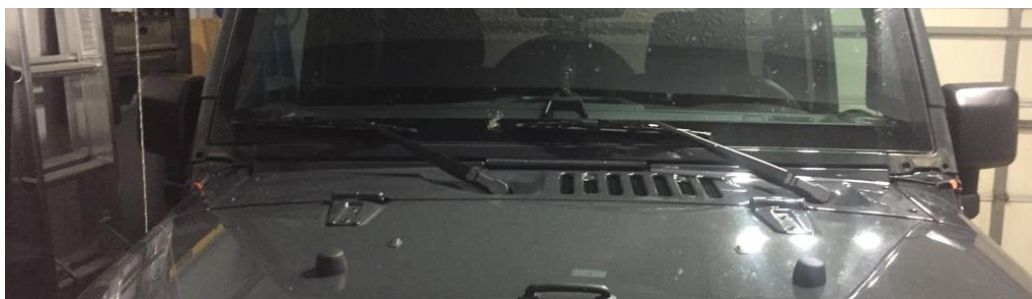
4. Place light on mount and affix the light to the mount using hardware supplied with the light (not included in this kit) (Figure E).



Figure E

5. Repeat Steps 2-4 on the passenger side.

Before



After



Installation Instructions Written by ExtremeTerrain Customer J. Sandlin 04/20/2017