

Raxiom Rear Cargo Light Installation Guide

Installation Time: 10 minutes

Tools Required

No tools required

Installation Instructions:

1. Remove all packaging around LED strip.



2. Install (4) AA batteries.



3. Unhook, rear wiper motor wire harness from the cover.



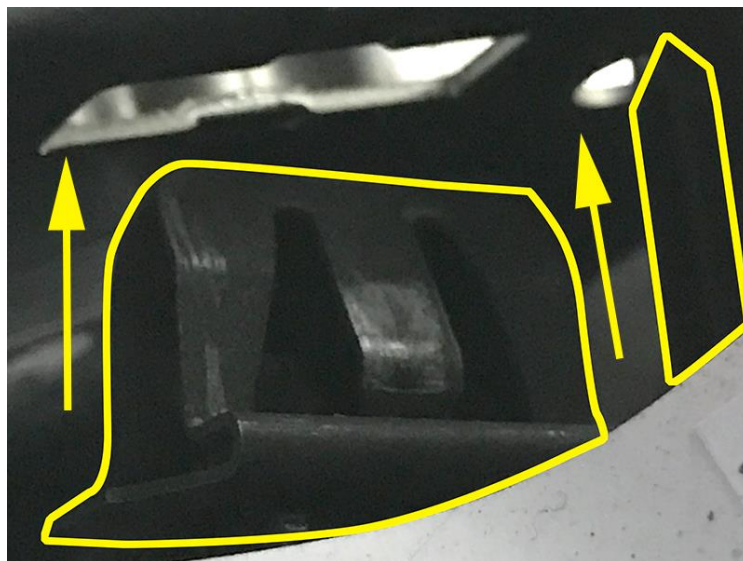
4. Open tailgate and lift rear hard to glass. The rear wiper motor cover is held in place by (3) metal tabs, firmly grab the cover by the edges and pull down to remove.



5. Hook the wiper motor's wire harness into the new replacement cover



6. Place the new cover into position, making note of the metal tab inserts and the alignment spike and press into place, ensuring all (3) metal tabs fully engage and click into position.



7. Turn the light cover on by pressing the side on/off switch. The light will activate when the rear glass is elevated.



Before

After



Installation Instructions Written by ExtremeTerrain Customer Louis Orellana 2/12/17