

JK75GBMOUNT

Jeep Wrangler 75WXST CB Mount for Passenger Grab Bar JK Models 2011 to Present

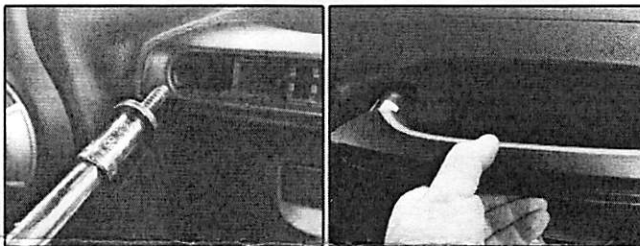
Tools Needed: Flat Head Screwdriver (or pry stick) & 8mm socket

Installation:

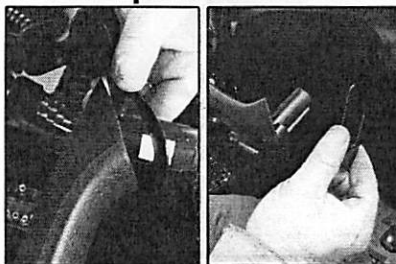
1: Pry out the trim insert off of the passenger grab bar carefully by using a small flat head screwdriver or a pry stick.



2: Unscrew the two 8mm screws that hold the bar to the dash.



3: Place the bracket (notch facing up) for the CB over the grab bar post closest to the steering wheel; place the spacer piece over the post closest to the passenger door.



4: Check for proper alignment of brackets and then resecure the grab bar onto the dash.



5: Your bracket is now ready to accommodate the Cobra 75WXST CB radio.

