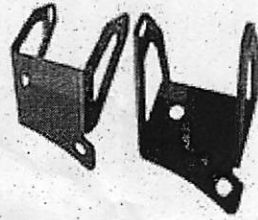


Installation Instructions

DESCRIPTION: LIGHT BAR FOR JEEP WRANGLER 07-12



Installation steps:

Step 1: Remove five of the factory bolts on the driver side windshield frame bracket. (Fig A)

Step 2: Remove the same bolts on the passenger side.

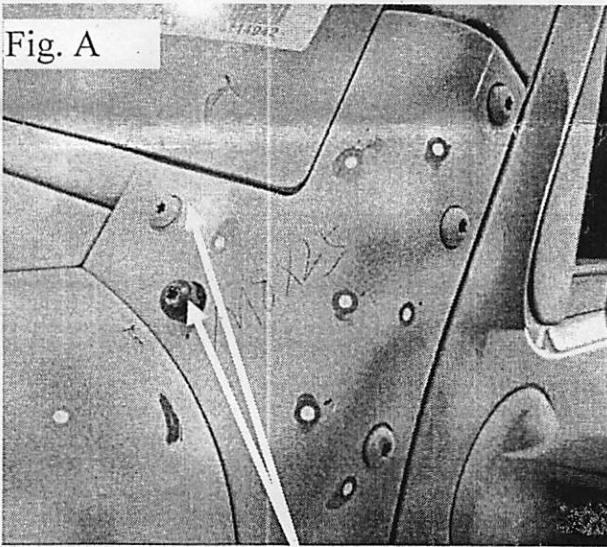
Step 3: Install each side upright bracket using the previously removed five factory bolts. Do not fully secure at this time. Use caution when doing this in order to protect the finish of your vehicle. and then loaded into the original lamp bracket screw holes at the car.

Step 4: Check whether the drain on the bolts, whether all the bolts tightened.

Step 5: Install easy to complete.

Installation diagram:

Fig. A



With the factory screws

Fig. B

