

Installation Instructions

Description: BUMPER FOR JEEP WRANGLER JK 12

No.	Description	Qty	Size	No.	Description	Qty	Size
1	Hex bolt	2	M12x30	3	Lock washer	8	D12
2	Hex nut	6	M12	4	Washer	8	D12

Installation Steps:

1. Reference parts lists and installation drawings, check the accessories are complete.
2. Remove the factory bumper & the frame bracket, to fix the bumper to the frame with the screws. (Fig.1 & Fig.2 & Fig.3AB)
3. All bolts are screwed on and adjust the best position to slowly tighten all bolts.
4. Check for leakage on the bolts, make sure tighten all the bolts.

Installation Diagram:

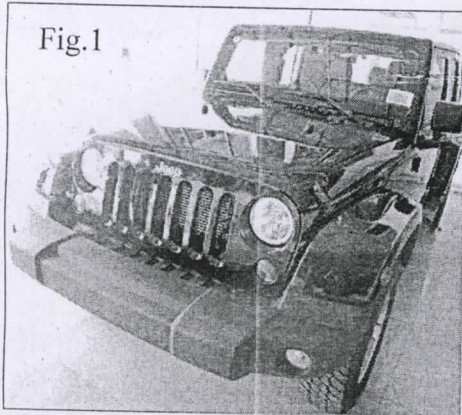


Fig.1

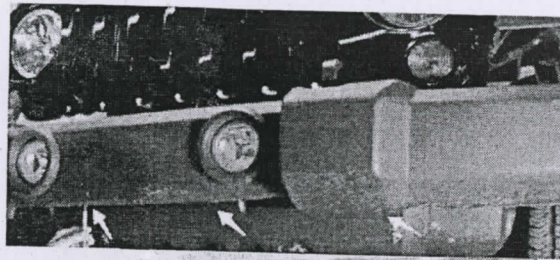
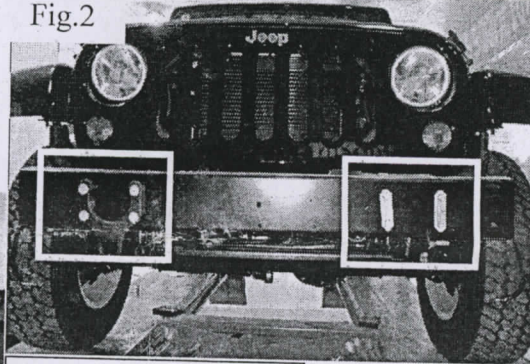
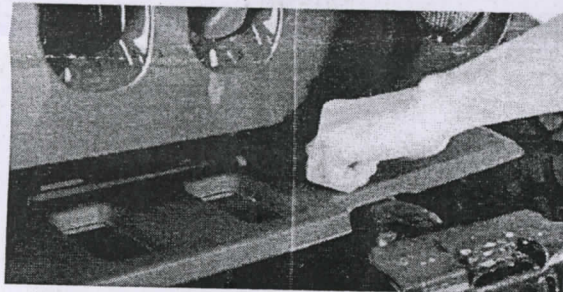


Fig.2



Remove the plastic bumper & the frame bracket (Fig.1 & Fig.2 & Fig.3AB)

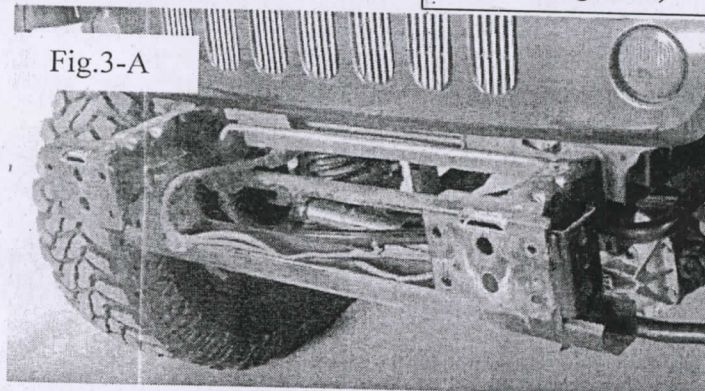


Fig.3-A

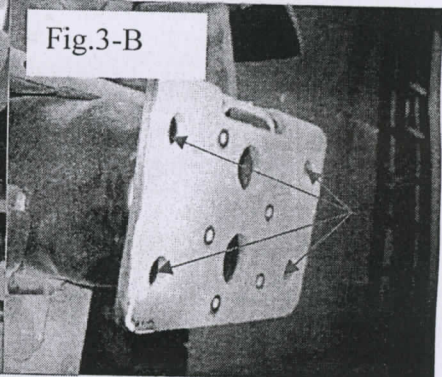


Fig.3-B

