

## RedLine Tuning Hood QuickLIFT Plus Installation Guide

**Installation Time:** 90 Minutes

### **Tools Required:**

- ✓ Two ½" combination wrenches
- ✓ Cordless drill
- ✓ 5/16" drill bit
- ✓ 3/16" drill bit
- ✓ Marker
- ✓ Tape measure
- ✓ Hammer
- ✓ Center punch



### **Installation Instructions:**

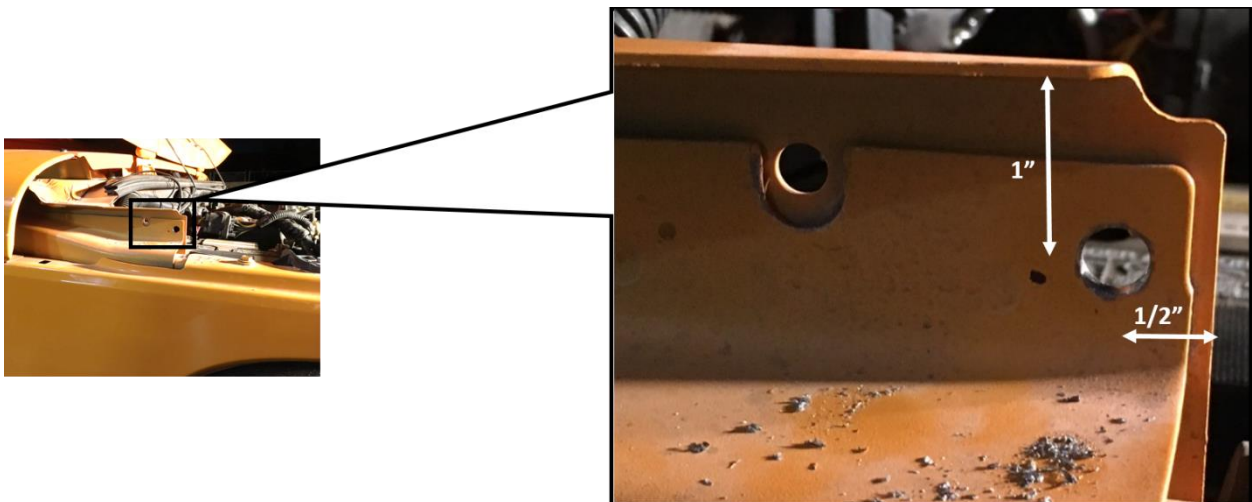
1. Inspect contents. You should have:
  - 2x Gas springs
  - 4x 3/16" rivets
  - 2x Ball Studs with washers and lock nuts
  - 2x Mounting brackets
  - Instructions
  - Touch-up paint for drilled holes (optional)
2. Open your hood and rest it on the windshield frame (you may want to pad between the two).
3. Mark bracket position. Measure 21" up from the bottom of the hood along the inside of the outer edge and mark the spot with a marker.



4. Mark bracket mounting hole locations. Hold a mounting bracket parallel to the edge of the hood with the ball centered on the mark you made. Adjust the bracket until it is 2" from the outer edge of the hood. Use a marker to mark the location of the holes in the bracket.



5. Drill bracket mounting holes. Use a hammer and center punch to dimple the marked hole locations and drill them using the 3/16" drill bit. Go slowly to avoid damaging the outer surface of the hood (it's easy to dent or drill through the outer hood skin if you're not careful).
6. Attach the bracket. Line the bracket up on the holes you just drilled (ensuring that the ball is facing toward the centerline of the hood). Use a pop rivet tool and two of the supplied rivets to attach the bracket to the holes.
7. Mark the lower ball stud hole. Find the raised lip running forward from the firewall parallel to the fender. Measure 1/2" back from the front edge and make a mark. Measure 1" down from the top edge and make another mark intersecting the first mark. This is where the lower ball stud will be mounted.





8. Drill for and mount the lower ball stud. Center punch the marked location and drill a 5/16" hole. Deburr this hole and place the ball stud through it from the inside, place the provided washer on the stud from the outside and use 1/2" wrenches to tighten the locking nut onto the stud



**Do not** attach the gas spring to this side yet or preparing the other side will be much harder. If you already did and need to remove it, use a small flat screwdriver to lift the metal clip on the end of the gas spring and pull the gas spring off of the ball post. It should come off very easily. If it does not, the clip is not fully disengaged

9. Repeat steps 3-8 on the other side.
10. Attach the gas springs. Snap the hole at the larger diameter end of the gas spring onto the ball post on the bracket mounted to the hood. Snap the other end over the lower ball stud.

**CAUTION:** You may want a helper for this part. A single gas spring supports the raised hood very weakly. Without support while the second gas spring is being inserted, the hood may drop unexpectedly.

**Before:**



**After:**

