

## GraBars BootBars (07-17 Wrangler JK)

**Installation Time:** 30 minutes or less

**Tools Required:**

- ✓ Stock Jeep Tools Or T50 Torx
- ✓ 9/16" socket
- ✓ Socket wrench
- ✓ 5/16" Allen wrench

**Before Picture:**



**Note:** In the picture below the bar for the right side is on the right and the bar for the left is on the left. Notice the rubber nub is slightly off center.



### Installation Instructions:

1. First you will need to remove the doors. If you already have them removed, skip to step 5. Using the stock Jeep ratchet with the T50 Torx bit, remove the 2 nuts on the bottom of the door hinges

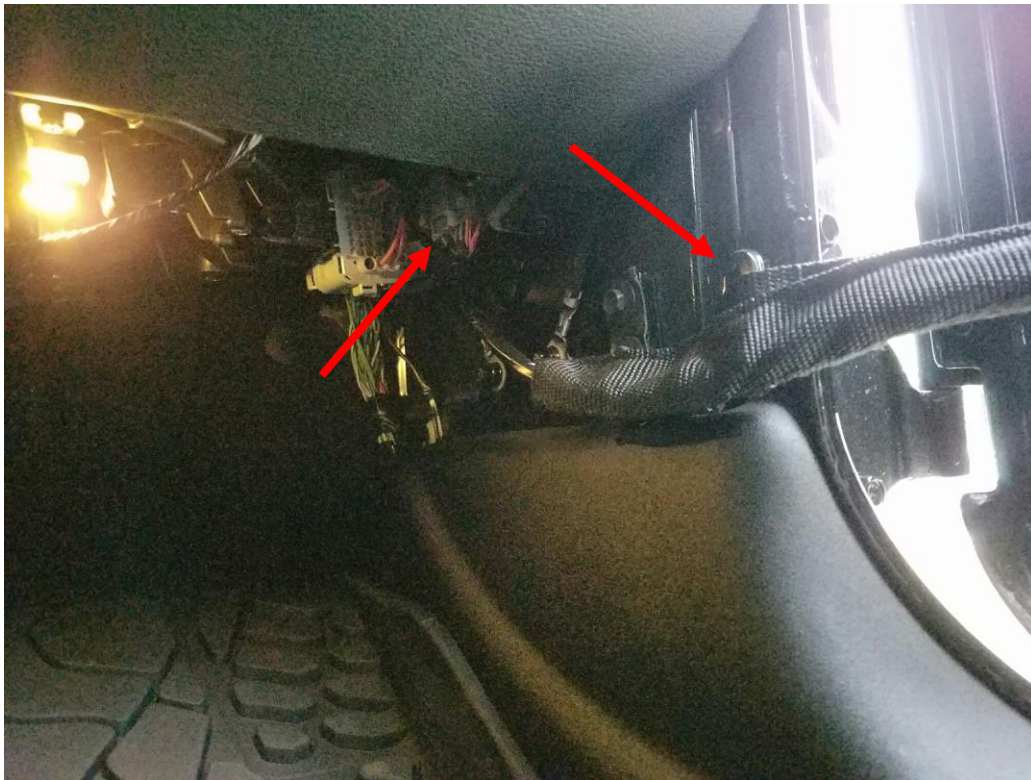


2. Make sure to fold your mirror in prior to disconnecting the inside door connections or the door could swing and dent the outside. Opening the window can also help with removal in a later step





3. Disconnect the wire harness and remove the webbing from the metal bracket. For the wire harness you just need to press the plastic button in the middle to release. Make sure to hold onto the door so it doesn't swing into something.



4. Open the door and remove it. You can hold onto the outer door handle and the bottom of the door. It is also helpful to have the window open so you can hold onto the top. Make sure you have a place to put the door that will protect it before you remove it, it is heavy and difficult to maneuver.



5. Insert one of the supplied bolts into the BootBar. Do not use a washer here.



6. Insert the bolt into the lower door hinge as shown. If you have the correct Bar for this side the rubber nub will be offset toward the front of the Jeep.





7. Put a supplied washer and nut on the bolt. Tighten with 5/16" Allen wrench and a 9/16" socket. You don't need it super tight, just enough to keep it from rattling around.



8. Rotate the BootBar fully forward and it's ready to go! Complete Steps 1-8 on the other side.



**After Picture:**



Installation Instructions Written by ExtremeTerrain Customer John Parker 11/21/2016