

INSTALLATION INSTRUCTIONS

Barricade Extreme HD Rear Bumper (07-16 Wrangler JK)

Installation Time: 2 Hours

Tools Required:

- ✓ Ratchet
- ✓ ¾ Socket
- ✓ Allen Key Set
- ✓ Safety Goggle



Inside the Box:

- ✓ Bumper
- ✓ Bumper Plates
- ✓ Bolt Kit



Installation Instructions:

1. Remove the 6 bolts that connect the factory bumper to the chassis, and then remove the factory bumper.



2. Remove 3 bolts that connect the OE tow hook, and then remove the OE tow hook.



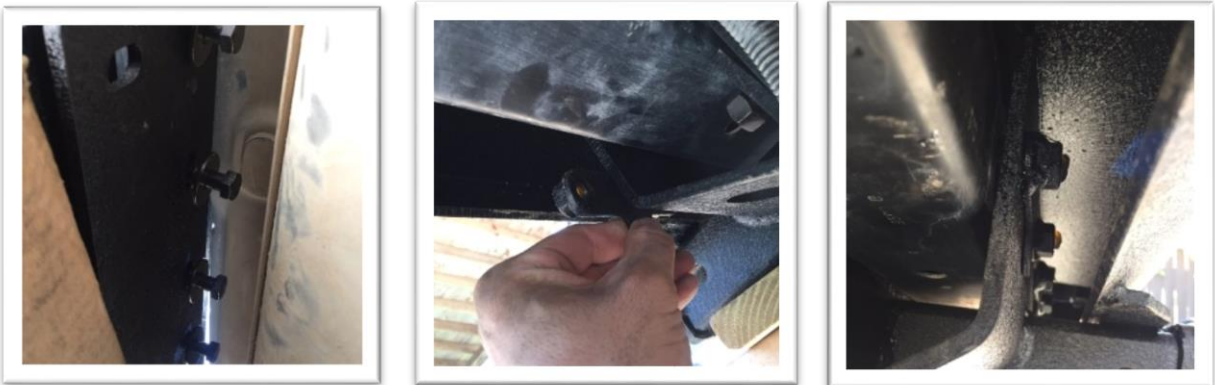
- Place the L-Bracket into the end of the vehicle frame, with the threaded holes pointing away from the jeep so that the bumper will be held in place.



- Place the new bumper on the vehicle, securing it but leaving the bolts loose.



- From behind the OE bumper frame, place the backing plate above the bumper and secure it.



- Tighten all bolts that secure the bumper to the frame.



7. Attach the bumper plates using the supplied Allen bolts.



8. Installation Complete!

