

# Installation Instructions for Rugged Ridge Spartacus 10,500lbs Winch

Installation Time: 60 Minutes

## Tools Required:

- ✓ 5/8 socket wrench
- ✓ 1/2 Socket wrench
- ✓ Allen Key Set

## Installation Instructions:

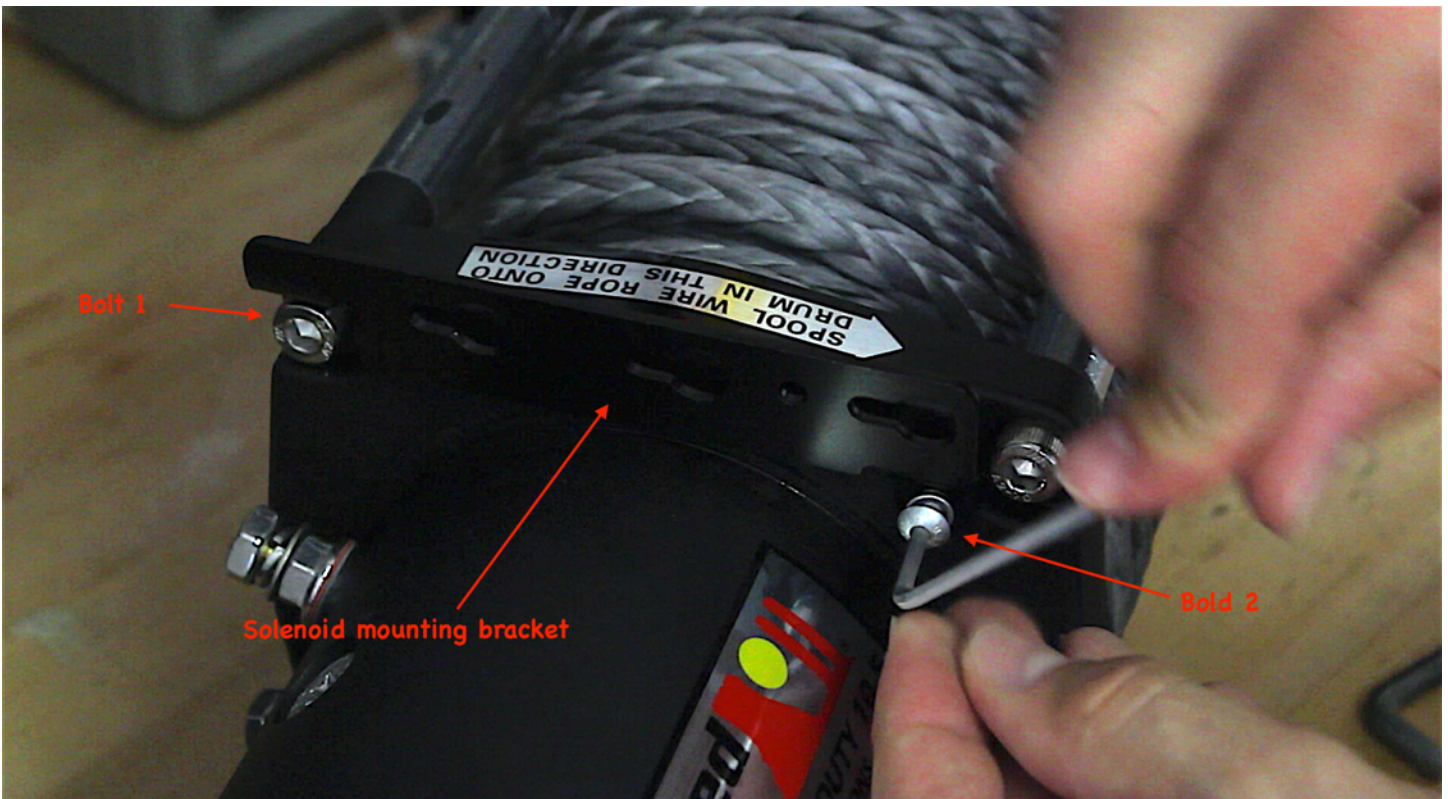
1. Mount solenoid on top of winch motor. Mounting bracket provided.



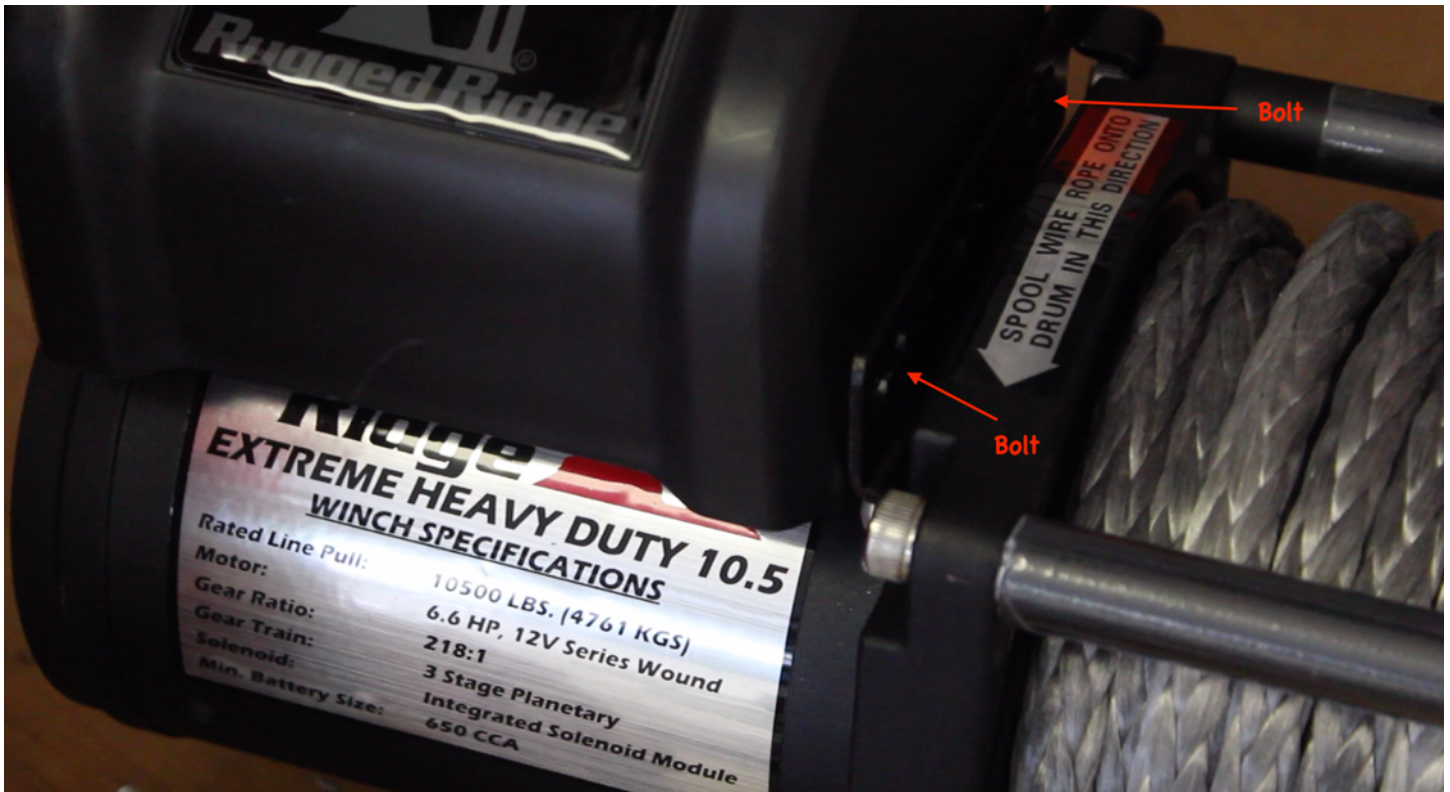
2. Remove the back left screw with allen key (Bolt 1)



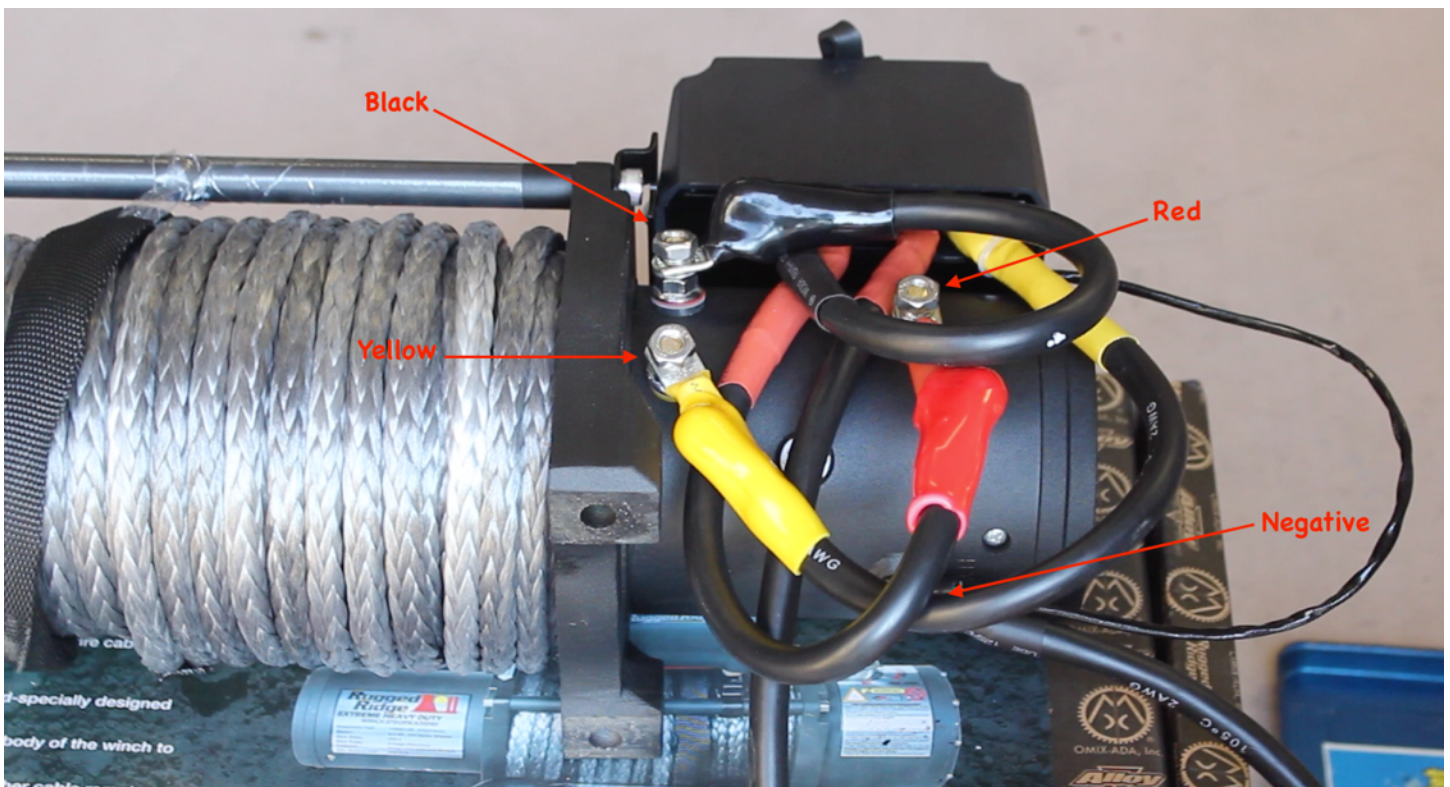
3. Mount solenoid bracket using bolt 1 which was removed in Step 2 and use the small bolt provided in the hardware kit (Bolt 2).



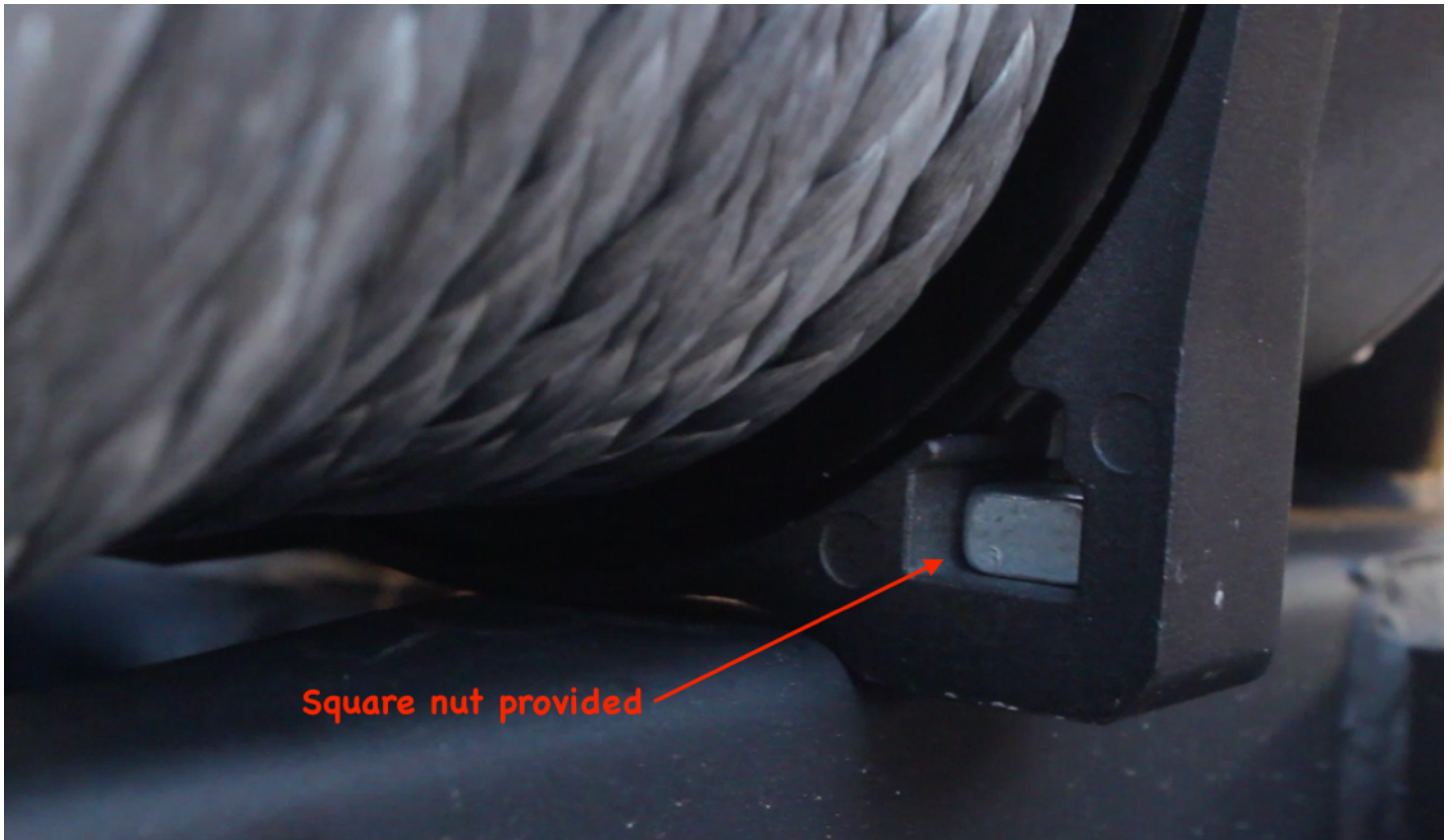
- Secure solenoid onto solenoid mounting bracket with the 2 bolts on the left of the solenoid box.



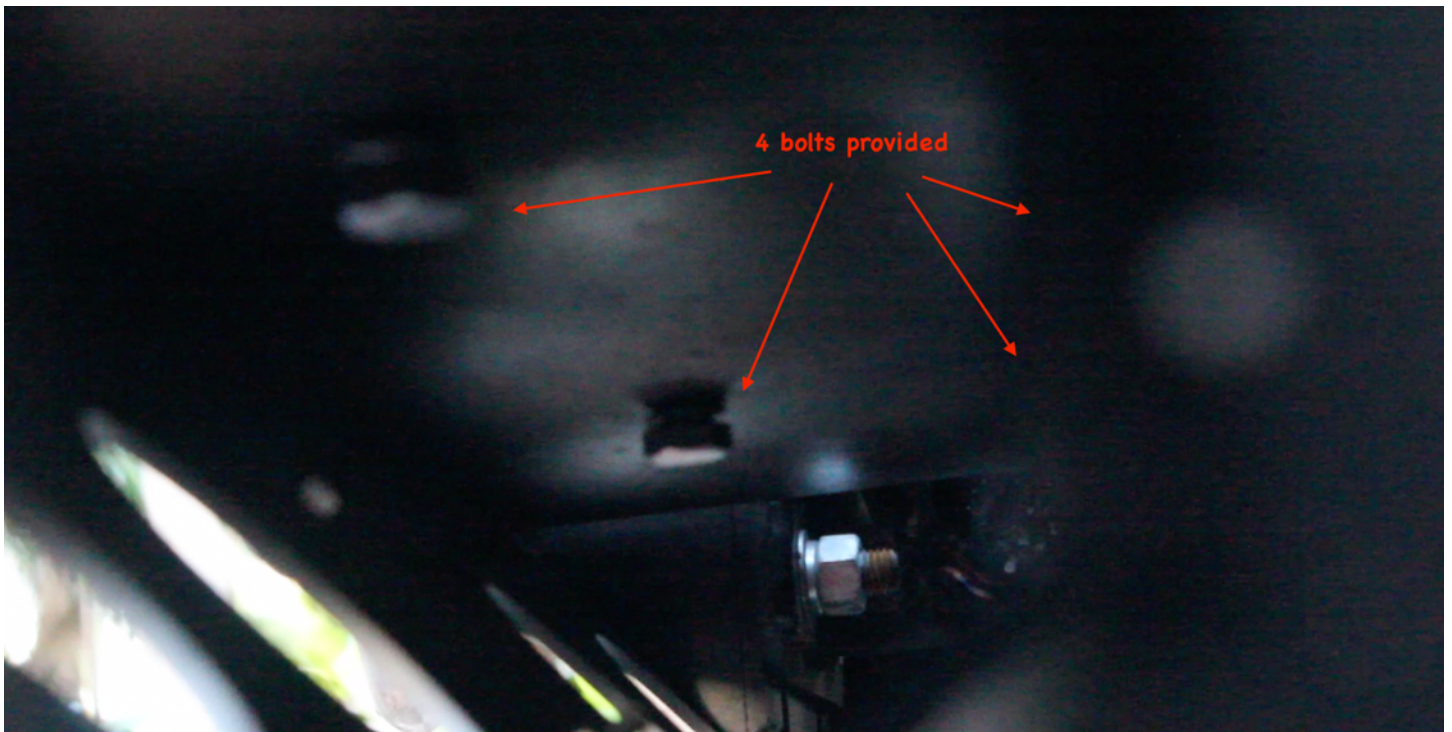
- On the back of the winch motor, connect the short red wire to the red terminal. Connect the short black wire to the black terminal. Connect the short yellow wire to the yellow terminal. Connect one end of the long black wire and the thin black wire to the negative terminal. The long red wire will connect to the positive terminal on the battery and the other end of the long black wire will connect to the negative terminal of the battery.



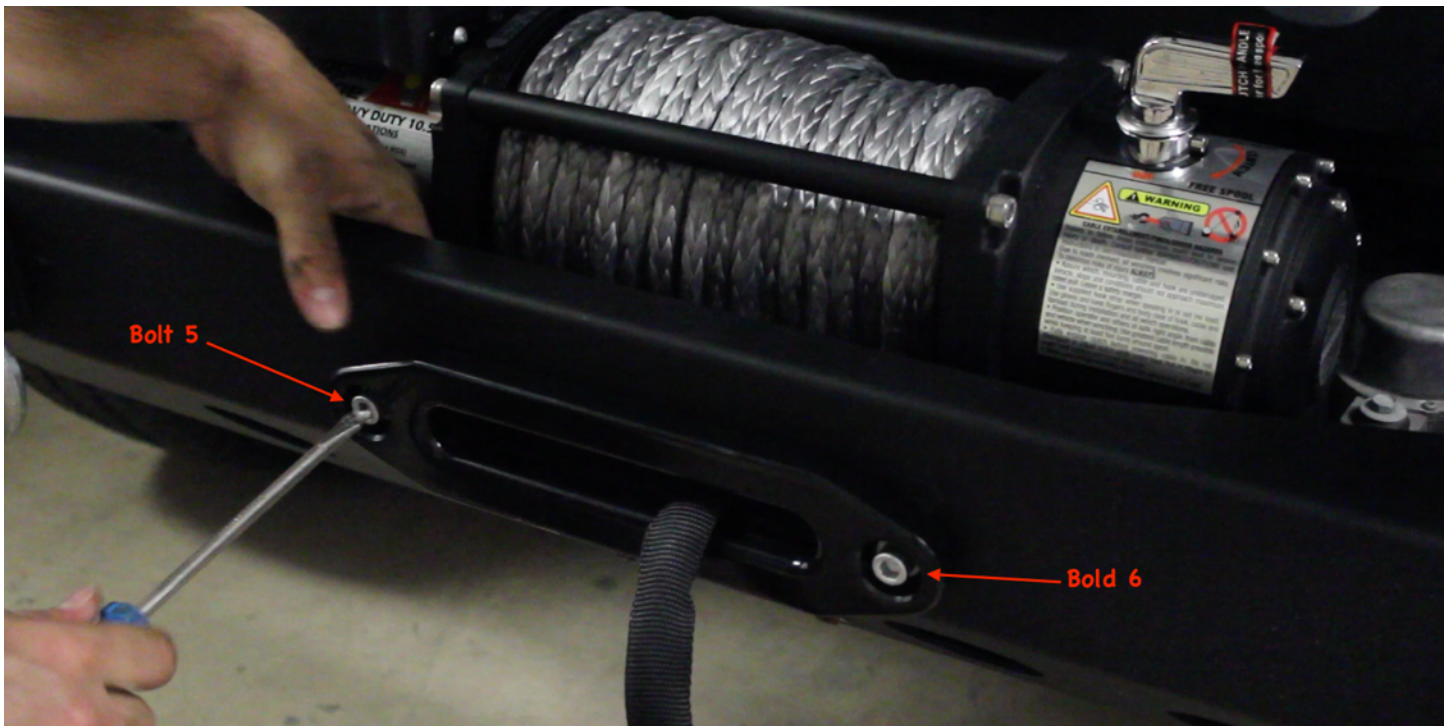
6. Place the 4 square nuts provided, into the space in each leg of the winch.



7. Using the 4 bolts provided, place a tightening washer on each and screw into the 4 square nuts from below the winch.



8. Secure the fairlead with the 2 allen key bolts provided.



9. Plug remote control into the top of the solenoid box to test operations.

