

Installation Instructions for Rugged Ridge Quick Release Mirror Kit

Part Number: 11025.18 (97-16 Wranglers)

Tools Required:

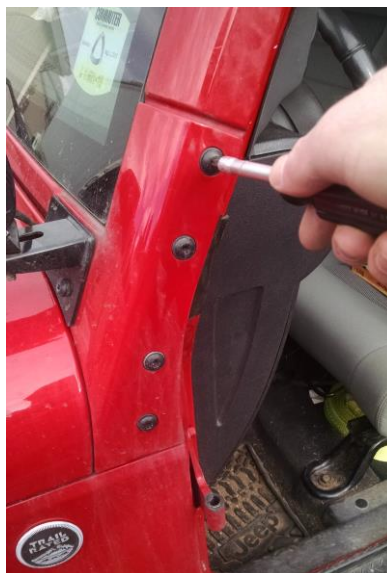
- T40 Torx Screwdriver
- 11 mm Socket
- Phillips Screwdriver

Installation Instructions:

1. For full installation, either remove the stock mirrors from the doors or remove the doors.



2. Using the T40 Torx screwdriver, remove the upper two bolts in windshield bracket located on the A-pillar.



- a) Using a socket wrench with a T40 bit can be helpful.



- b) For JK's, keep the original hardware to be used for the mirror bracket. For TJ's, use the hardware included with the mirror kit.

3. Mirror Bracket Installation (driver side):

- a) Remove the sleeve and thumbscrew from the mirror bracket and set them aside. This will provide enough room to tighten the bolts.



- b) Install the mirror bracket using the proper hardware. Install with the welded nut on the lower side.



c) Tighten the bolts.



4. To install the passenger side mirror bracket, repeat steps 1-3 on the passenger side.

5. Mirror Assembly Installation (both sides):

- a) The mirror arm has a flat end with a hole for a bolt. The mirror should be installed on the side with largest flat area (right hand side of picture).



- b) Using the included M8 nut, washer, and lock nut, install the arm to the mirror. The order should be: nut, lock nut, washer, arm, mirror.



c) Tighten the assembly down, but don't over tighten.



d) Slide the bushing onto the arm. Some back and forth rotations might help.



e) Repeat step 5 for the second mirror.

6. Aligning mirror bushing (driver side): Each arm has 4 holes drilled out where the bushing sits for left-right reversibility. This step shows how to pick which holes to use.
 - a) Hold the driver side mirror with your right hand by the bushing end of the arm at roughly the angle you want it on your Jeep. Rotate the arm and mirror until it is at a nearly usable angle.



- b) Rotate just the bushing so that the top or bottom of the bushing (the flat parts) are flush with your palm. From there, rotate the bushing to the nearest pair of holes on the arm.



7. To align the passenger side bushing, repeat step 6 except hold the arm with your left hand.

- Slide the arms into the brackets on the Jeep at the angle you want. Use the thumbscrew to tighten the assembly into place.



- For each mirror, rotate and align the mirror as desired. Once aligned, use a phillips screwdriver to tighten the three screws on the reverse face of the mirror. This will help prevent the mirror from moving while driving. Do not over tighten these screws.



10. Enjoy street legal doorless driving and the slick new looks!



These installation instructions were written by Extreme Terrain customer Eric Miller on 2/14/2016