

## Installation Guide for Rugged Ridge CB Radio & Antenna Mount Kit

**Installation Time:** 45 Minutes

**Tools Required:**

- ✓ #2 Phillips Head Screwdriver
- ✓ 3/8" Drill Bit and Drill
- ✓ T-25 or T-15 Torx Driver (2011 and new models only)
- ✓ 13mm socket wrench

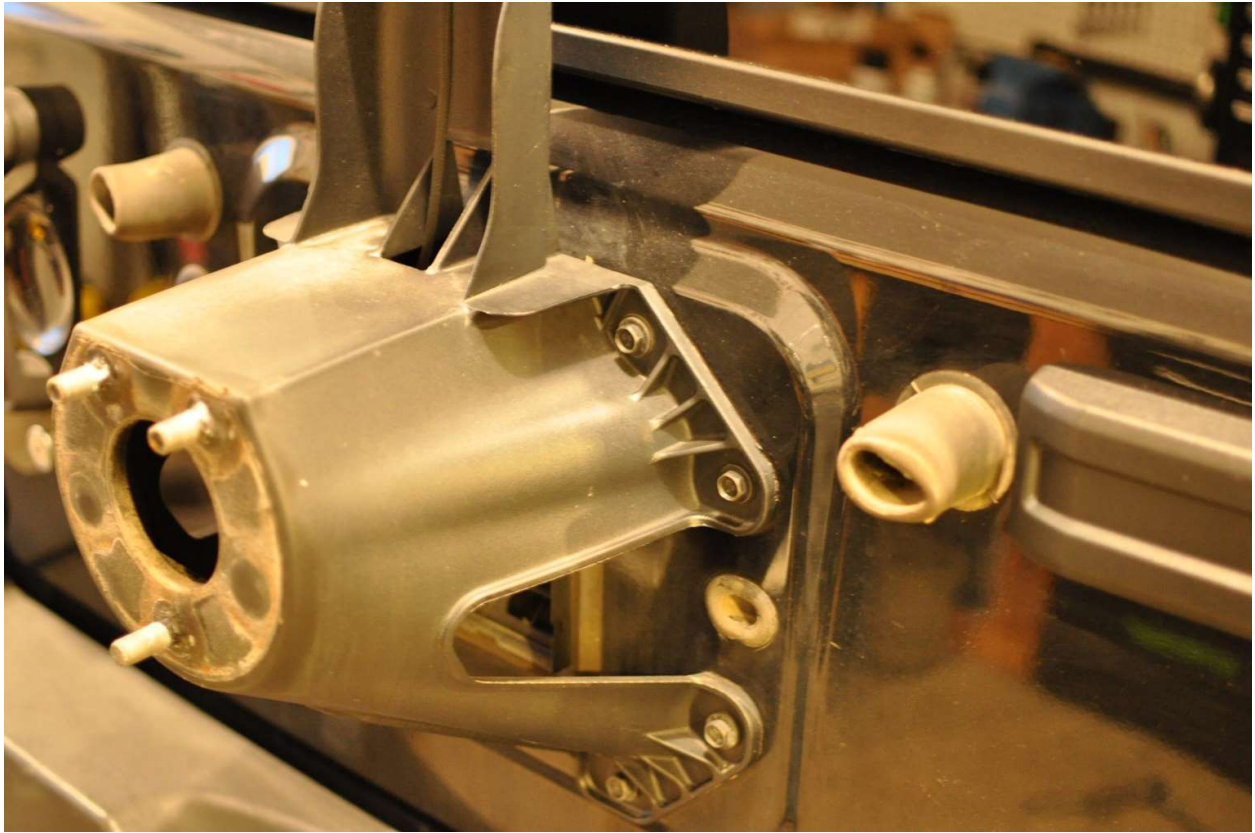
*Installation of the CB Radio Mount will be much easier if the front hard top panels are removed or the soft top is folded back.*

**Installation Instructions:**

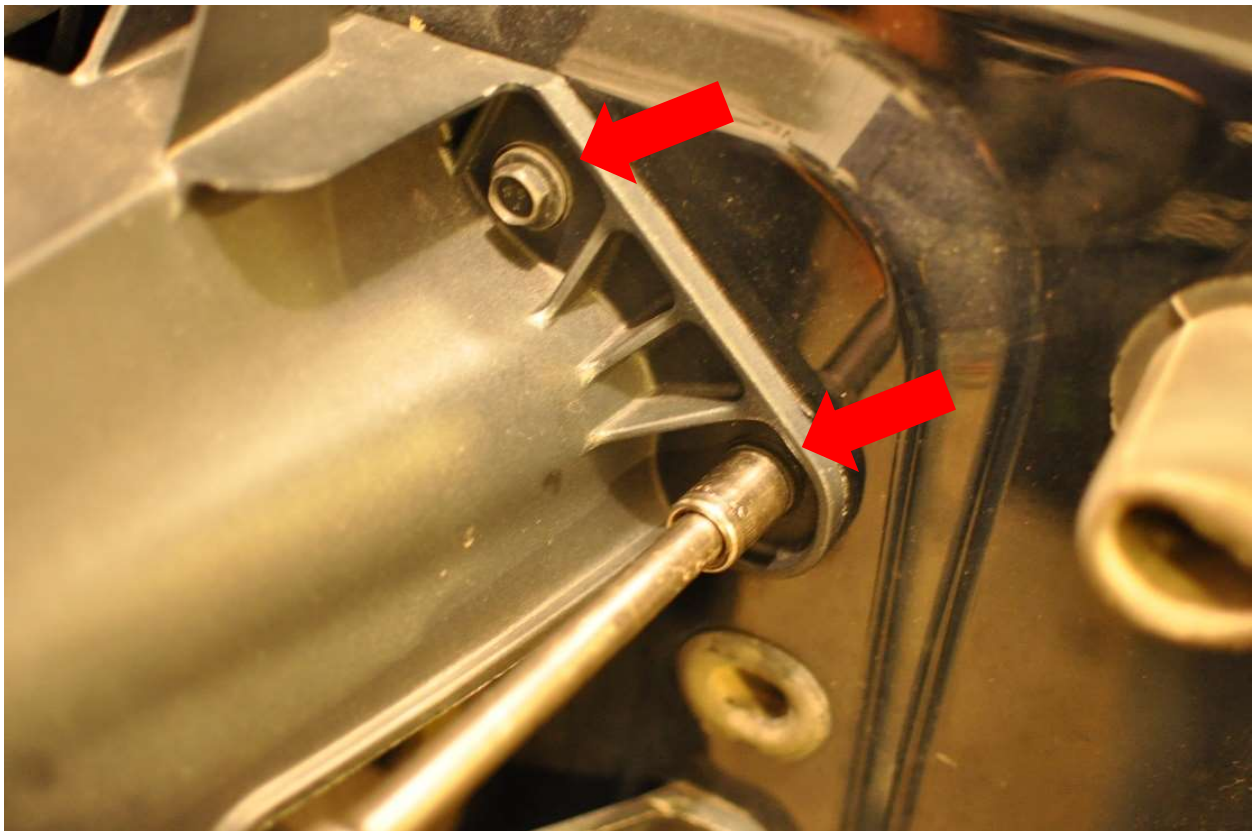
*What's in the box:*



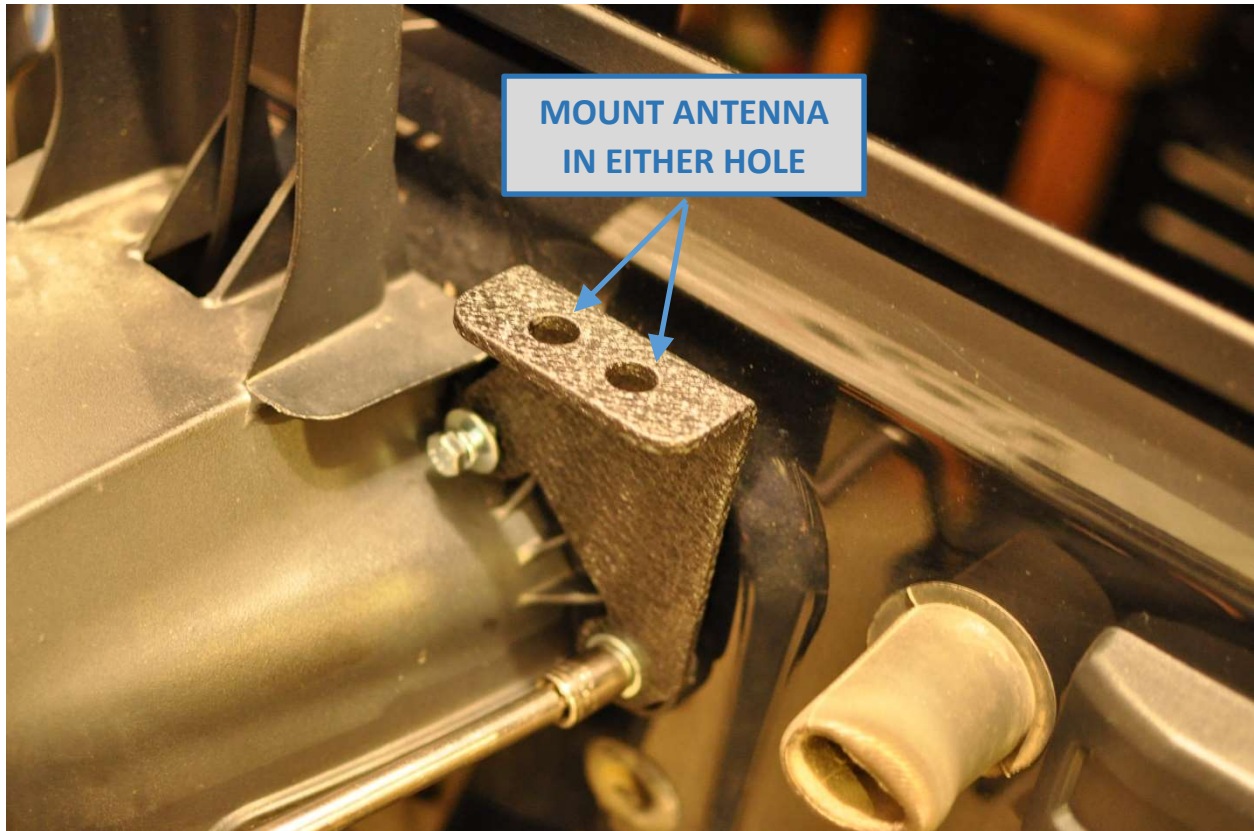
1. Beginning with the CB Antenna Mount, remove the spare tire from the factory tire mount.



2. Remove the 2 upper right 8mm bolts using a 13mm socket



3. Install the CB Antenna Mount using the 2 supplied 8 x 40mm hex bolts, lock washers and flat washers. Torque the bolts to approximately 10 ft-lbs. Note that the CB Antenna can be installed in either hole of the bracket. Remount the spare tire after installation of the CB Antenna is completed.



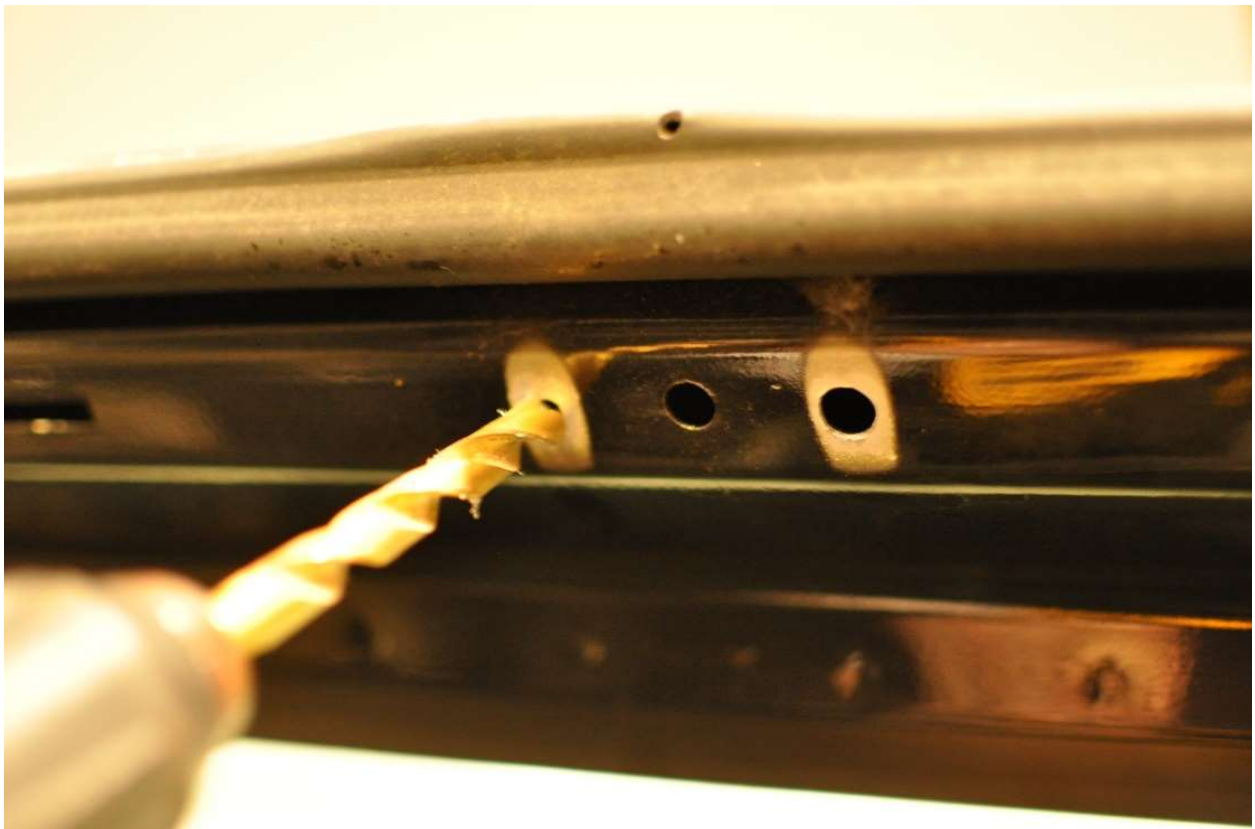
4. To begin installation of the CB Radio Mount, rotate the sun visors against the side windows. Remove the center portion of the plastic windshield frame cover by pulling down until the clips release. No tools are necessary.



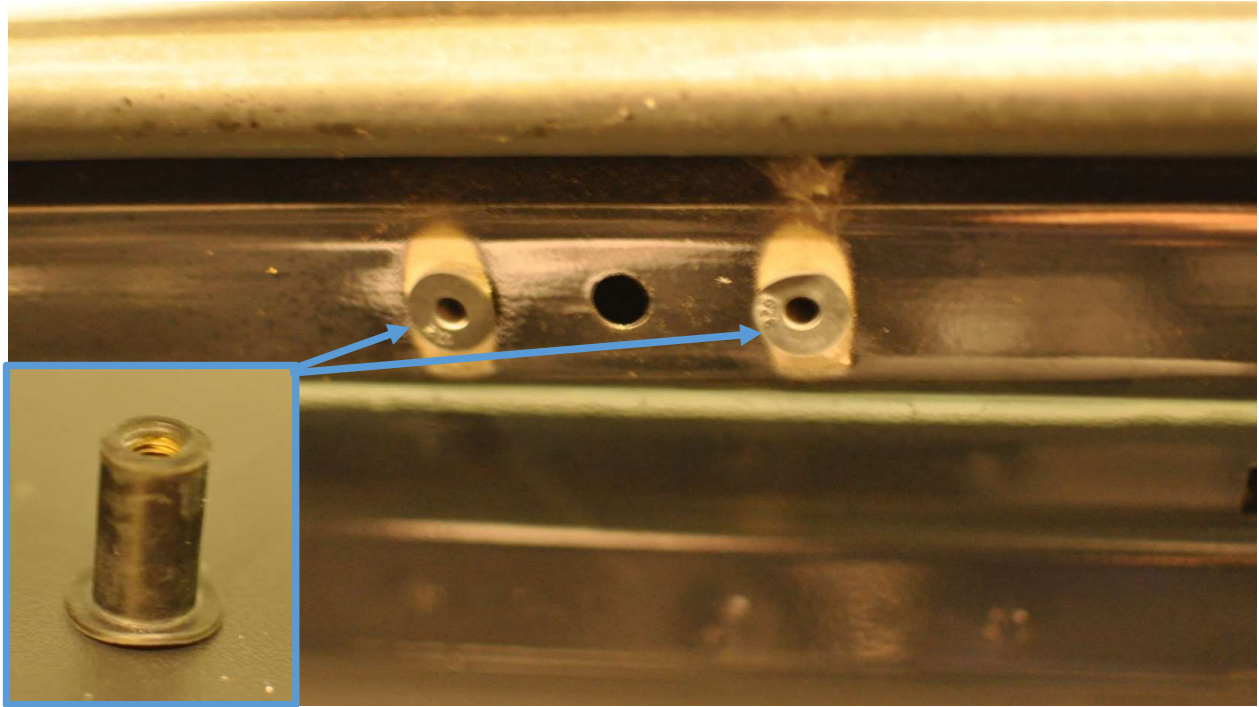
5. Remove the footman loop. For 2007-2010 model JK's (shown in picture), it will be necessary to drill out the 2 rivets using a 3/8" drill bit. For 2011 and new models, simply remove the 2 Torx screws.



6. For 2007-2010 model JK's it is necessary to drill out the 2 footman loop holes in the windshield channel to 3/8" to accept well nuts. Be careful to not drill too deep or you may damage the exterior of the windshield frame.



7. Insert the 2 rubber well nuts into the newly drilled 3/8" holes. If well nuts do not fit snugly in the holes, a small amount of glue can be used to hold them in place.



8. For 2007-2010 model JK's (shown in picture) use the provided 5 x 20mm screws to install the CB mount with the footman loop sandwiched between the windshield frame and CB mount. For 2011 and newer model JK's use the factory Torx screws to install the CB mount with the footman loop sandwiched between the windshield frame and CB mount.



9. Remove the center positioning lug from the plastic windshield frame covers using a diagonal cutting pliers or similar. This is necessary because the new CB Radio Mount covers this hole in the windshield channel.



10. Replace the center plastic windshield frame cover by snapping it back into place. Install your CB Radio Mount using the (2) 5 x 15mm bolts and locking hex nuts.



Finished Product

