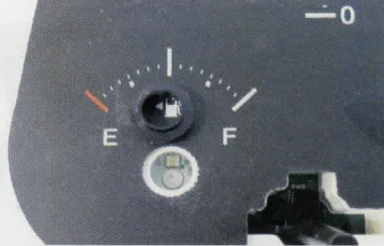


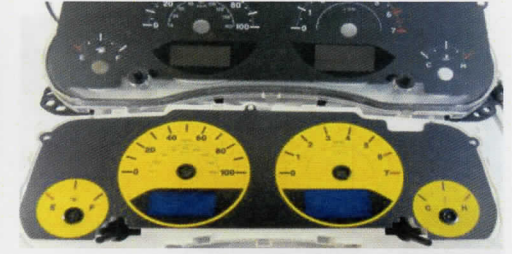
16. After the needles are removed, remove the black plastic circles. KEEP.



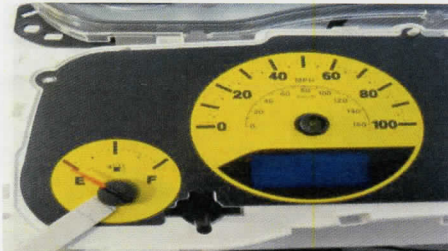
17. Remove each trim. Just snaps into place. KEEP These



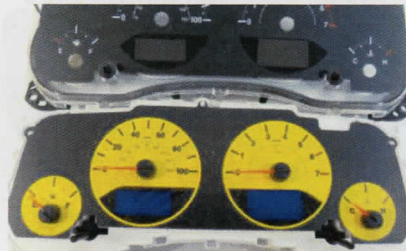
18. Remove the stock gauge face.



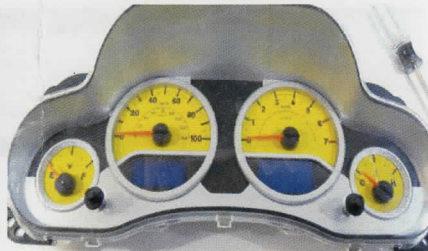
19. Place the new US Speedo gauge face into position. Replace the trim circles.



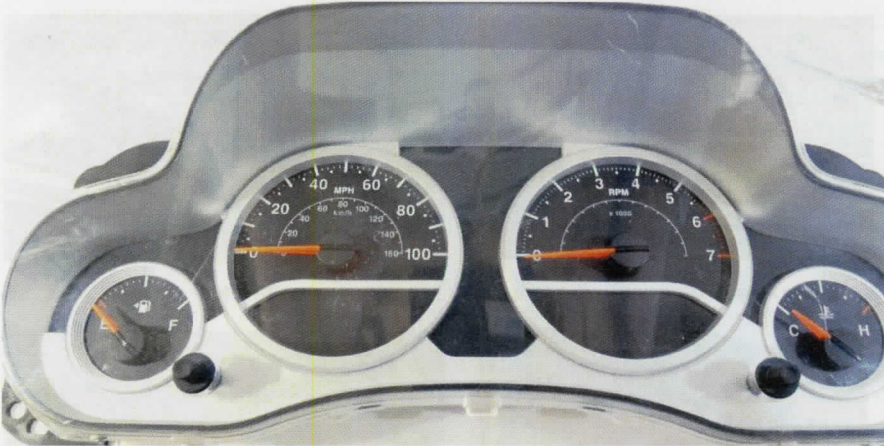
20. Set each needle as the picture you took. Use the handle as a height guide under the needle hub



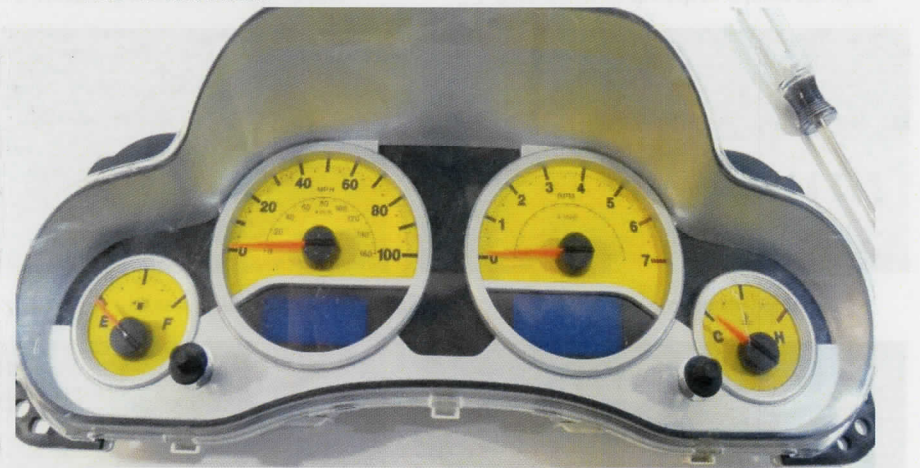
21. Set each needle. Plug into the car and check.



22. After each needle is correct, put the lens on and install.



This is the correct needle placement.



After. If you need help...Call US Speedo



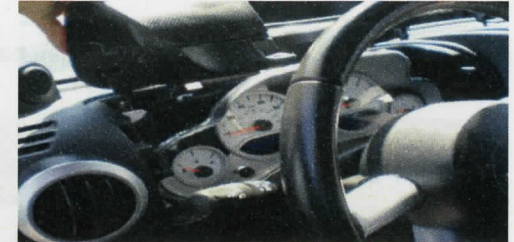
07 - Newer



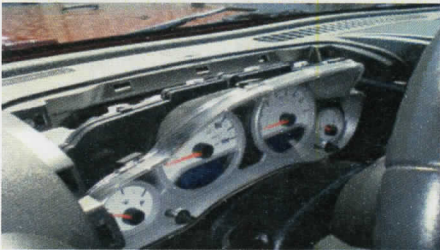
1. Pull down trim under steering wheel.



2. Remove 2 screws from the top trim.



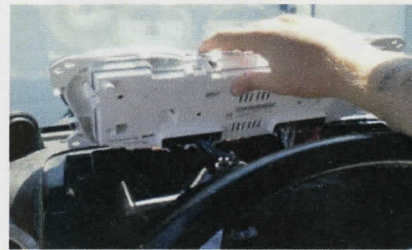
3. Remove trim around speedometer.



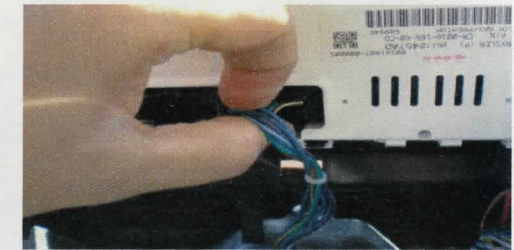
4. There are 4 screw holding cluster in place.



5. Remove the 4 screws.



6. Unplug the wires from the cluster.



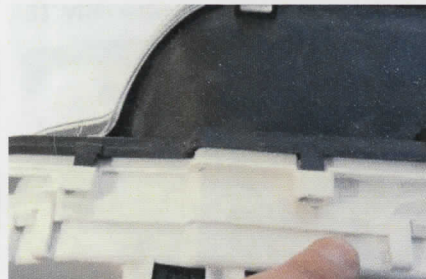
7. Push down on the tab to release the plug.



8. Continue to unplug the others.



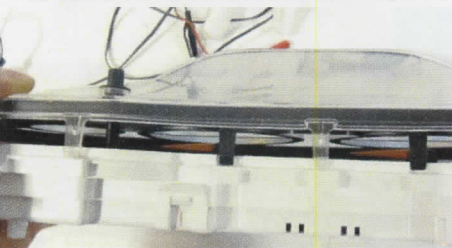
9. Take cluster into a clean area to install the gauge face. Take a pic of the needles placement



10. Press to release the tabs to remove the lens and top trim.



11. It is tricky to get several to release at the same time.



12. Remove the top lens and clean if required.



13. Make sure to mark the needle position or take a pic.



14. Twist each needle down past zero or the low stop.



15. Use the needle tool to remove each needle. Pull straight up.