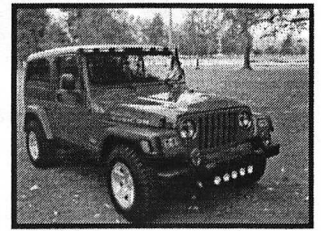


DELTA®

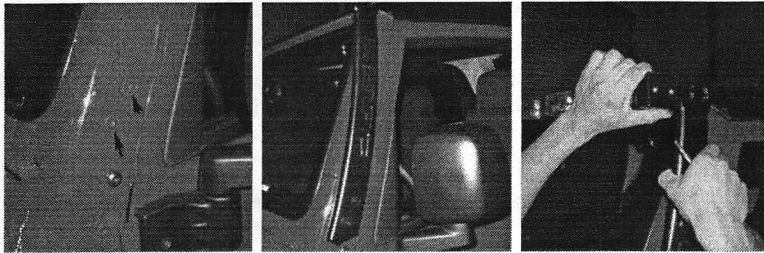
WIRING INSTRUCTIONS JEEP® SKYBAR™



Read through these instructions completely before beginning installation. Also verify all of the components listed in the contents list below are included before drilling.

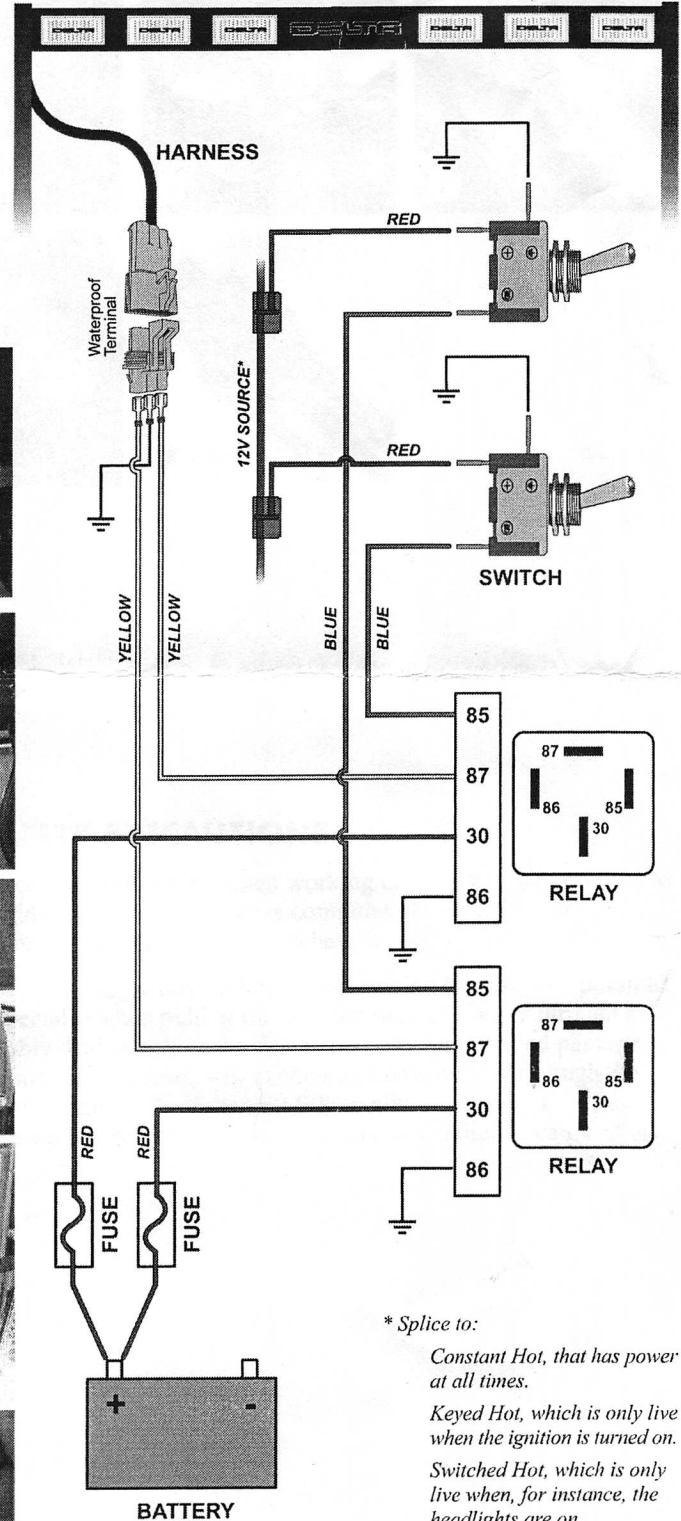
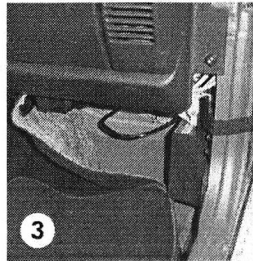
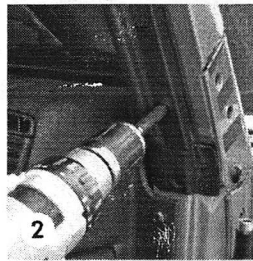
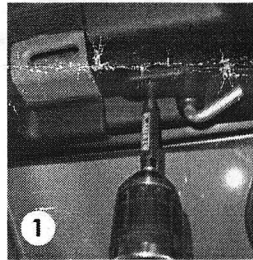
Mount Bar

1. Remove the two upper bolts on both sides of the windshield hinges as pictured.
2. Using the supplied (4) 5/16" x 1 1/4" bolts, mount both arms of the SkyBar™.
3. Mount the light bar between the two arms using the four (4) 1/4" x 1" supplied screws.



Install Wiring

1. Remove the passenger side visor. (Pic #1)
2. Remove the center upper console and the passenger side quarter trim. (Pic #2)
3. Drill a 1/2" hole in the body near the outside upper corner surrounding the windshield (passenger side) in the proximity of the terminal (plug) leading from the SkyBar.
4. Drill a 1/2" size hole in the firewall from inside the cab area on the passenger side, making sure not to damage anything inside the engine compartment. (Pic #3)
5. Remove the fuse from the fuse holder in the harness until final testing. (Pic #4)
6. Connect the (2) red wires leading from the fuse holder to the positive (+) terminal on the battery. (Pic #5)
7. Mount the relay, prongs facing down, to the support bar inside the engine compartment that runs from the grill to the firewall. (Pic #6)
8. Ground the two black wire leads from the supplied wiring harness to the body of the Jeep inside the engine compartment by using the supplied self-tapping screws (2 ea.).
9. Run the two blue wires, one black wire, and two yellow wires from the engine compartment through the new hole in the firewall. (Pic #7)
10. Push the supplied round rubber grommet all the way through the firewall hole and continue pulling the wires through.
11. Pull the second grommet halfway through the hole and install in the firewall hole.



* Splice to:
 Constant Hot, that has power at all times.
 Keyed Hot, which is only live when the ignition is turned on.
 Switched Hot, which is only live when, for instance, the headlights are on.