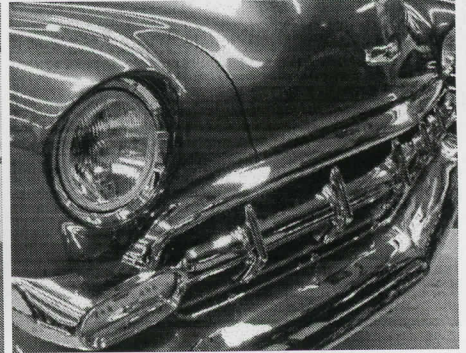
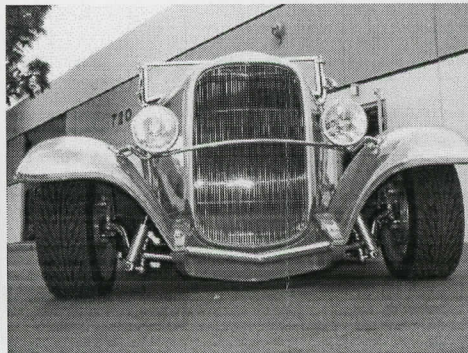
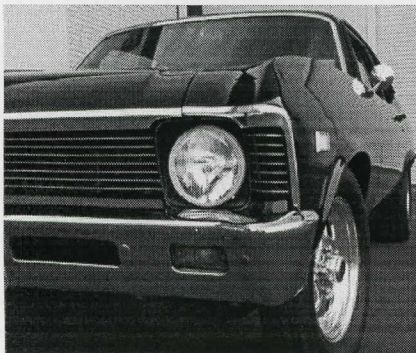
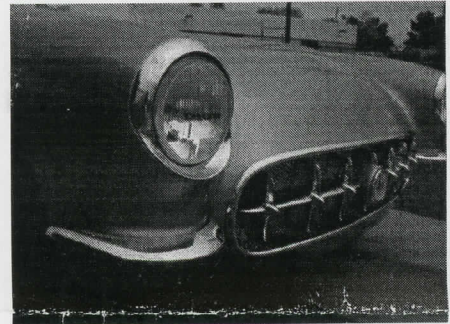
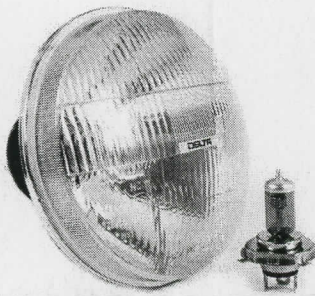
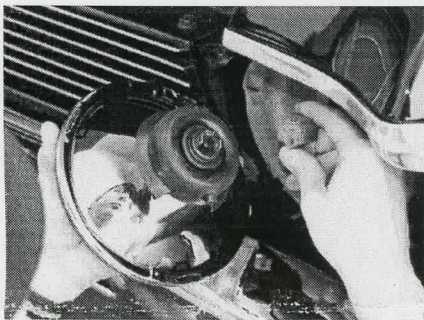


DELTA L I G H T S

DELTA CLASSIC HI/LO HEADLAMP KIT 7" Round Replacement for 6204 1179 & 1189 (w/City Lights) Series

INSTALLATION INSTRUCTION

1. Remove your existing headlamps by unscrewing the bezel surrounding the headlamp.
2. Remove the retaining ring holding the headlamp.
3. Unplug the socket in the back of the headlamp element.
4. Plug in your DELTA headlamp element and install into the headlamp bucket using factory bezel and screws.
5. Tighten the bezel back on.



6. If your DELTA xenon headlamps are equipped with "City Lights" (small, low wattage bulbs on the side of your reflector). These "City Lights" could be used as your extra Parking Lights, Daytime Running Lights or Directional Lights. For Parking Lights, just tap your City Light to each respective factory parking light. For DRL application, you may use LED Mood Light bulbs, LED SMD white bulbs or Halogen 20W bulbs (optional) and run a wire lead to ignition fuse line. For Directional Lights, replace the miniature bulbs with amber bulbs or LED SMD amber bulbs (optional) and tap each light to the respective factory directional light line. All these optional miniature bulbs can be purchased online at www.deltalights.com by typing in a number 03-5053 in the Search Box.

NOTE: When installing be sure rubber boot is snugly fitting over the reflector providing a good seal against moisture. In the event any moisture is trapped inside the headlight causing it to steam up, please follow these procedures: Peel back the rubber boot and carefully remove the bulb by releasing first the bulb spring. Allow vapor to escape by holding the headlight in sunlight or using a hair dryer. When completed, assemble the bulb and re-seal the boot around the reflector.